

IKA

designed for scientists

EN



EASY TO USE

Passionately enabling chemists to create a better world since 1910.
From A to Z.

ROTARY EVAPORATORS MADE BY IKA.

Rotary Evaporators

/// Modular design and highest precision

The award-winning design and performance of the IKA rotary evaporators will make a significant difference in your laboratory.

Our RV 8, RV10 digital and control evaporators offer excellent distilling solutions to the demanding work of scientists. Great value, design and technology - all at your convenience!

In our product range, the RV 8 is the entry level option with manual lift and adjustable immersion angle.

Our advanced RV10 evaporators stand out because of their extraordinary features, such as: digital display for heating bath and drive, interval option, soft start and adjustable end point recognition to protect the glassware from breaking. The digital and control models offer RS 232 and RS232/USB interfaces respectively for using labworldsoft® and for online firmware updates.

5-YEAR WARRANTY*

*2+3 years after registering at www.ika.com/register, glassware and wearing parts excluded



Find out more about IKA and order our fascinating products online: www.ika.com.

4	8
/// RV 8	/// RV 10 DIGITAL
12	16
/// RV 10 CONTROL	/// RV 10 CONTROL AUTO
20	22
/// HB 10	/// ROTARY EVAPORATORS
24	26
/// TECHNICAL DATA	/// ACCESSORIES
40	44
/// PACKAGES	/// SOFTWARE
45	
/// IKA SERVICE	

RV 8

/// The smart choice

The RV 8 rotary evaporator comes equipped with an easy to use semi-manual lift with integrated safety “lift out function” and is ideal for all standard evaporating applications. Digital displays for both rotation speed and heating bath temperature allow for optimal controlling of all distillation processes. The RV 8 provides a user-friendly operation and distills the required solvent accurately with precise results. Additionally a Woulff bottle is included in all the RV 8 packages.



Two digital displays
for an optimal overview.



Advanced heating bath
HB 10 **included in delivery.**



Compatible with the complete range
of **IKA RV 10 glassware.**



Push-out function.



Can be moved by **130 mm**
to accommodate different flasks.



Adjustable immersion
angle and height.



PERFORMANCE

/// RV 8 V, Ident. No. 0010002170 | RV 8 V-C, Ident. No. 0010002173 | RV 8 FLEX, Ident. No. 0010002166

RV 8 V	with heating bath HB 10 and RV 10.1 set of glassware, vertical
RV 8 V-C	with heating bath HB 10 and RV 10.10 set of glassware, vertical, coated
RV 8 FLEX	with heating bath HB 10, incl. Woulff bottle

RV 8

/// RV 8 in detail



OVERVIEW OF COMPONENTS

- | | |
|--|---|
| 1 vertical glassware (other options available) | 8 lift raised automatically in case of power outage |
| 2 various flask sizes | 9 choice of angle |
| 3 vacuum connection plus Woulff bottle; | 10 black and white display |
| 4 two displays for optimal view | 11 locking mechanism red for unlocked state of vapor tube |
| 5 heating bath can be used separately | 12 vapor tube held in plastic sleeves to prevent sticking |
| 6 ergonomic carrying handles on heating bath; can be moved by 120 mm to accommodate different flasks | |
| 7 motorized height-adjustable lift; | |

RV 8 IS THE LATEST IN DISTILLING TECHNOLOGY THAT GIVES YOU MORE OPTIONS TO FIT WITHIN YOUR BUDGET



SEMI-MANUAL MECHANISM

The new RV 8 offers a semi-manual mechanism. The ambidextrous design makes working more convenient and comfortable.



RV 10 digital

/// Robust and reliable lab companion



BEST-IN-CLASS
COOLING SURFACE
1,500 CM²



Two digital displays
for an optimal overview.



Compatible with the complete range
of **IKA RV 10 glassware**.



Can be moved by **140 mm**
to accommodate different flasks.



Advanced heating bath
HB 10 **included in delivery**.



Push-out function.



Adjustable immersion
angle and height.

BENEFITS

- › universal water/oil heating bath
- › motorized lift with
“safety-stop” function
- › RS 232 Interface
- › optimized heating bath
volume for fast heat-up
- › ergonomically placed
handles on heating bath
- › smooth start
- › left-right interval
- › timer function
- › safety temperature circuits
- › lower-end stop
- › push-off mechanism to
loosen tight fitted glassware



PERFORMANCE

/// RV 10 digital V, Ident. No. 0008040300 |
RV 10 digital V-C, Ident. No. 0008040400 | RV 10 digital FLEX, Ident. No. 0008040500

RV 10 digital V	with heating bath HB 10 and RV 10.1 set of glassware, vertical
RV 10 digital V-C	with heating bath HB 10 and RV 10.10 set of glassware, vertical, coated
RV 10 digital FLEX	with heating bath HB 10, incl. Woulff bottle

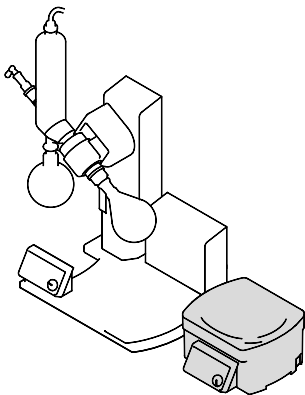
RV 10 digital

/// RV 10 digital in detail



OVERVIEW OF COMPONENTS

- 1 vertical glassware (other options available)
- 2 various flask sizes
- 3 vacuum connection plus Woulf bottle
- 4 adjustable safety stop
- 5 two displays for optimal view
- 6 heating bath can be used separately; ergonomic carrying handles on heating bath
- 7 can be moved by lift to accommodate different flasks
- 8 motorized height-adjustable lift; lift raised automatically in case of power outage
- 9 choice of angle
- 10 vapor tube held in plastic sleeves to prevent sticking
- 11 solvent resistant PTFE seal for long-term use



Heating bath with ergonomic carrying handles, can also be used separately.

RV 10 control

/// Efficient and safe distillation

With the integrated vacuum controller, a user can work with any vacuum source, or other single vacuum pump.

BEST-IN-CLASS
COOLING SURFACE
1,500 CM²

PATENTED
VOLUME CONTROLLED
DISTILLATION!



Compatible with the complete range of **IKA RV 10 glassware**.



Can be moved by **140 mm** to accommodate different flasks.



Advanced heating bath HB 10 **included in delivery**.



Push-out function.



Adjustable immersion angle and height.

BENEFITS

- › RV 10 control with advanced technology
- › automatic solvent boiling point detection
- › integrated solvent library (extendible by the customer)
- › integrated vacuum controller
- › USB interface and graphical display
- › direct connection to a speed-controlled pump possible
- › automatic monitoring of heating bath temperature
- › online-firmware update via USB or RS 232 possible
- › complete and customized system solution through combination of a rotary evaporator, a vacuum pump and a chiller
- › push-off mechanism to loosen tight fitted glassware
- › 3 different operating modes: manual, auto distillation, user-defined



RV 10 control packages

/// Best price offers



RV 10.4002 magnetic valve
included in RV 10 control package



N 920 speed controlled pump
included in RV 10 control auto package

RV 10 control
for lab vacuum system
› 2 × RV 10 control
› 1 × MVP 10 basic

+ RV 10 control
+ RV 10.4002 magnetic valve

RV 10 control auto
for stand alone operation

+ RV 10 control
+ N 920 speed controlled pump

Required water and vacuum hoses are included in the package.

PLEASE VISIT
WWW.IKA.COM/DISTILLING

RV 10 control V package
› RV 10 control V
+ HB 10 heating bath
+ RV 10.1 set of glassware, vertical

Ident. No. 0008037700

RV 10 control V auto package
› RV 10 control V auto
+ HB 10 heating bath
+ N 920 speed controlled pump
+ RV 10.1 set of glassware, vertical

Ident. No. 0008037800

RV 10 control V-C package
› RV 10 control V-C
+ HB 10 heating bath
+ RV 10.10 set of glassware, vertical, coated

Ident. No. 0008037900

RV 10 control V-C auto package
› RV 10 control V-C auto
+ HB 10 heating bath
+ N 920 speed controlled pump
+ RV 10.10 set of glassware, vertical, coated

Ident. No. 0008038000

RV 10 control FLEX package
› RV 10 control FLEX
+ HB 10 heating bath
+ Woulff bottle

Ident. No. 0008038100

RV 10 control FLEX package
› RV 10 control FLEX
+ HB 10 heating bath
+ N 920 speed controlled pump
+ Woulff bottle

Ident. No. 0008038200

RV 10 control auto

/// Automatic distillation

The enhanced RV 10 control is now equipped with our fully automated speed control pump N 920. Additionally, the RV 10 control auto detects the required level of vacuum pressure by detecting the boiling point of the solvent. This feature has some significant benefits over a valve-regulated system.

AUTOMATIC
BOILING POINT
DETECTION

BENEFITS

- › increased solvent recovery performance up to 100 %
- › automatic boiling point detection
- › speed controlled vacuum pump for precise vacuum level
- › reduced noise level and wearing of pump components
- › reduced process time and increased overall performance

The gentle maintenance of the vacuum level prevents over (or undershooting) of the target vacuum pressure, an occurrence that is often seen with valve-controlled systems. This feature allows for faster, more efficient and safer distilling processes. It also significantly reduces the noise level of the pump due to the motor speed management functionality of the RV 10 control auto. As a result, you save energy and increase the overall performance.

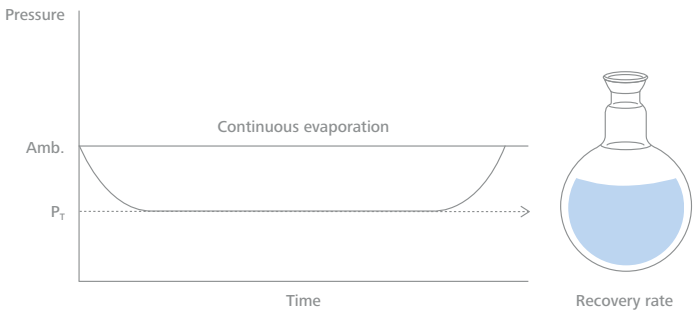
WHY TO USE THE RV10 CONTROL AUTO

Automatic

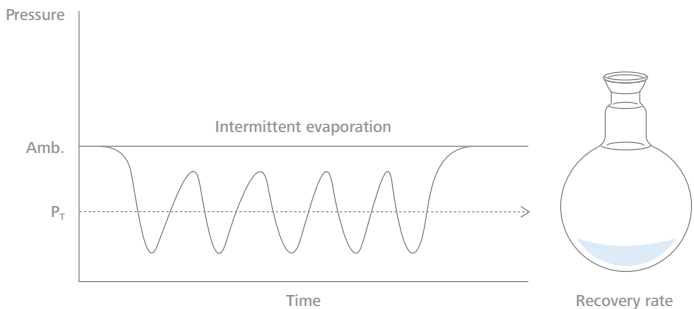
- › start heating bath
- › lift lowers
- › rotation starts
- › pump activates

Controlled

- › flow rate for the condenser
- › dT on the condenser
- › correct heating bath temperature



Fully automatic control with pump speed adjustment
Gentle and smooth control of a steady vacuum level with RV 10 control auto and speed controlled pump.



Valve-regulated
Typical behavior of pressure when using a valve-controlled system.

Amb. = Ambient Pressure
P_T = Target pressure

RV 10 control auto

/// An overview



OVERVIEW OF COMPONENTS

- 1

high performance vertical cooling condenser (different options available)
- 2

various flask sizes
- 3

adjustable safety stop
- 4

two displays for optimal view
- 5

heating bath can be used separately; ergonomic carrying handles on heating bath
- 6

RS 232 and USB interface
- 7

integrated vacuum controller
- 8

vapor tube held in plastic sleeves to prevent sticking
- 9

solvent resistant PTFE seal for long-term use
- 10

motorized height-adjustable lift raised automatically in case of power outage



HB 10

/// Universal heating bath

IKA heating baths are developed with a strong focus on safety. All baths are equipped with a double jacket to protect against burns and a safety temperature monitor keeps the bath from over heating. After turning on the unit every time, the safety functions are automatically checked.

BENEFITS

- › lock-function – prevents accidental change of bath settings
- › dry run control – stops heating the bath if the liquid level has dropped
- › adjustable safety temperature; user can set temperature limits.
- › the heating bath can be used as a stand-alone unit for other applications
- › ergonomic and well positioned handles for safe transport
- › optimized bath volume guarantees fast heat-up time
- › 3 operating modes to operate safer

TECHNICAL DATA
/// HB 10, Ident. No. 0004068000

Heat output	1,300 W	Volume	3 l
Temperature range	RT to +180 °C	Safety class acc. to DIN 12877	21
Setting tolerance	± 1 K	Adjustable safety circuit min / max	+50 °C / +190 °C
Deviation (3 l H ₂ O, +90 °C)	± 1 K	Material	stainless steel 1.4301
Temperature display	digital	Weight	3 kg
		Dimensions (W × D × H)	290 × 190 × 265 mm

HB 10 HEATING BATH:
FOR A LOW VOLUME AND
FAST HEAT-UP TIME



Integrated handles to
safely move heating bath

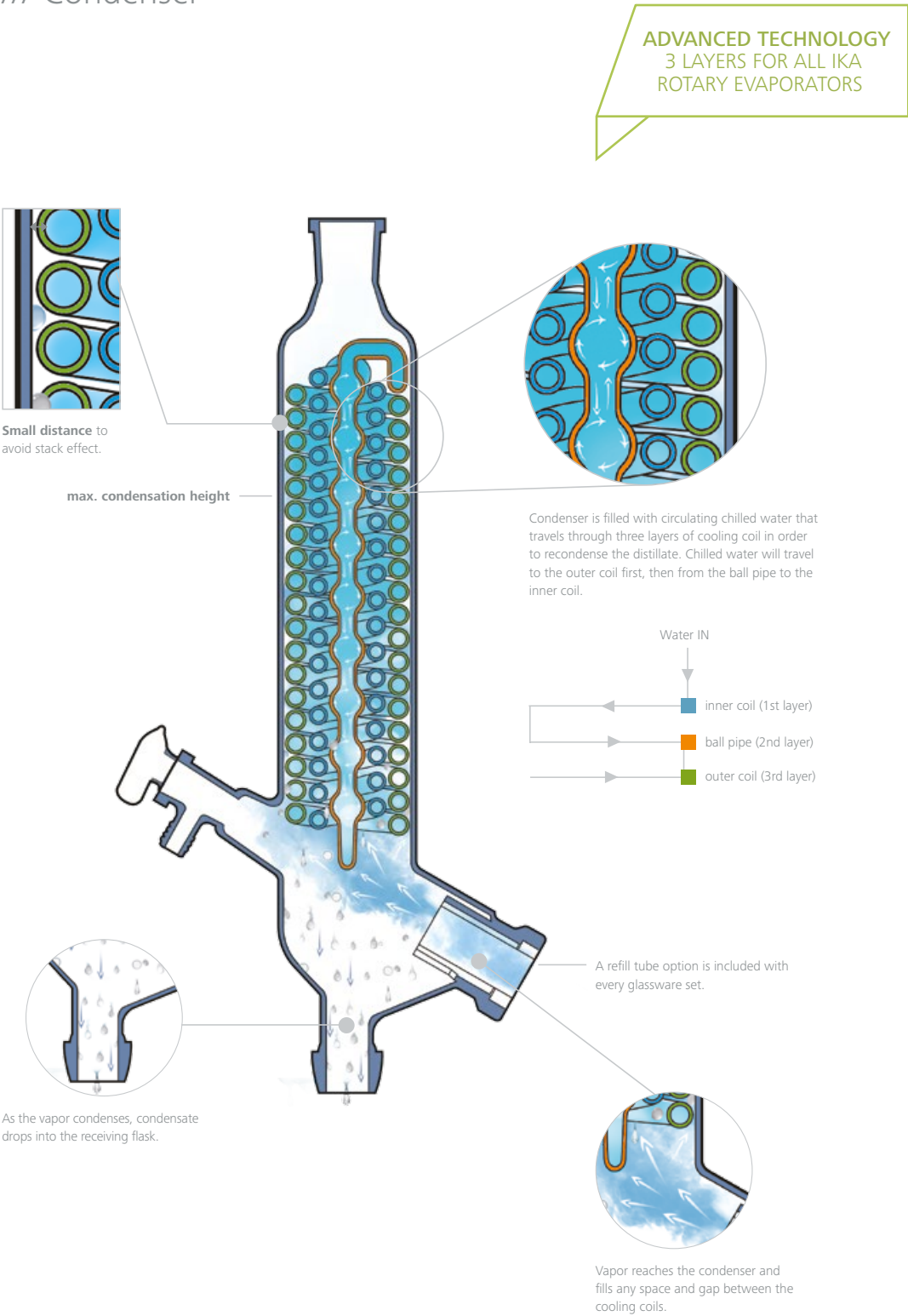
Digital Display LCD digital display for precise temperature setting.

Integrated ergonomic carrying handles.

Key-button with locking function for the heating bath temperature.

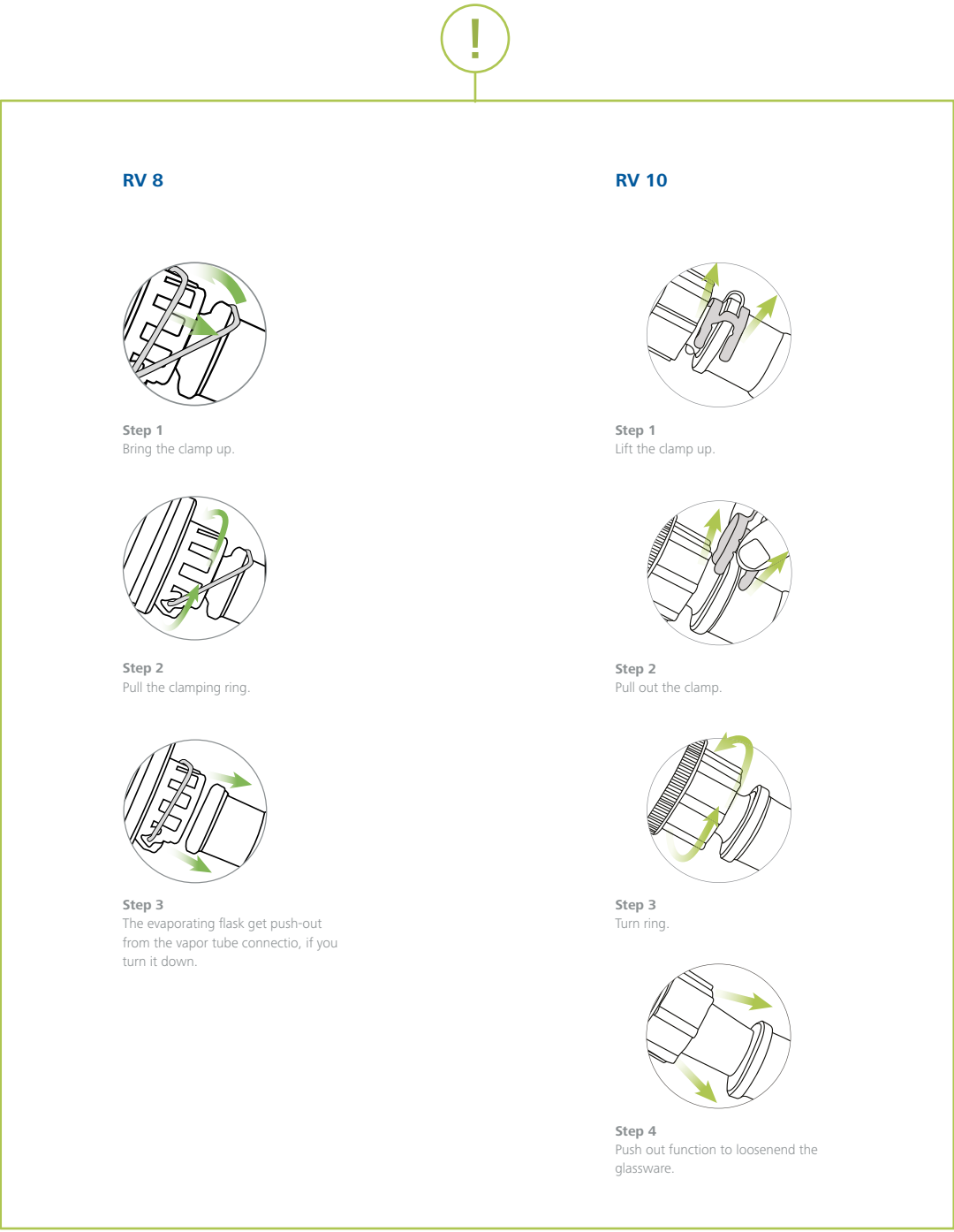
Rotary Evaporators

/// Condenser



Rotary Evaporators

/// Push-out function



Technical data

/// Rotary Evaporators

TECHNICAL DATA

/// Comparison

	RV 8	RV 10 digital	RV 10 control
Packages			
	RV 8 V	RV 10 digital V	RV 10 control V*
	RV 8 V-C	RV 10 digital V-C	RV 10 control V-C*
	RV 8 FLEX	RV 10 digital FLEX	RV 10 control FLEX*
Cooler type			
	V = vertical		
	V-C = vertical-coated		
	FLEX = incl. Woulff bottle, glassware to be ordered separately		
Cooling surface			
	1,500 cm ²		

* RV 10.4002 magnetic valve now included with delivery of every RV 10 control V, V-C and FLEX package.

IDENT. NO.

/// Comparison

RV 8		RV 10 control	
RV 8 V package	0008033800	RV 10 control V package	0008037700
RV 8 V-C package	0010002173	RV 10 control V-C package	0008037900
RV 8 FLEX package	0010002166	RV 10 control FLEX package	0008038100
RV 10 digital		RV 10 control V auto package	0008037800
		RV 10 control V-C auto package	0008038000
		RV 10 control FLEX auto package	0008038200
RV 10 digital V package	0008040300		
RV 10 digital V-C package	0008040400		
RV 10 digital FLEX package	0008040500		

V: Rotary evaporator with set of vertical glassware.
V-C: Rotary evaporator with set of vertical coated glassware.
FLEX: Rotary evaporator without any glassware (condenser, evaporation and receiving flask); either use pre-existing IKA glassware or order separately.

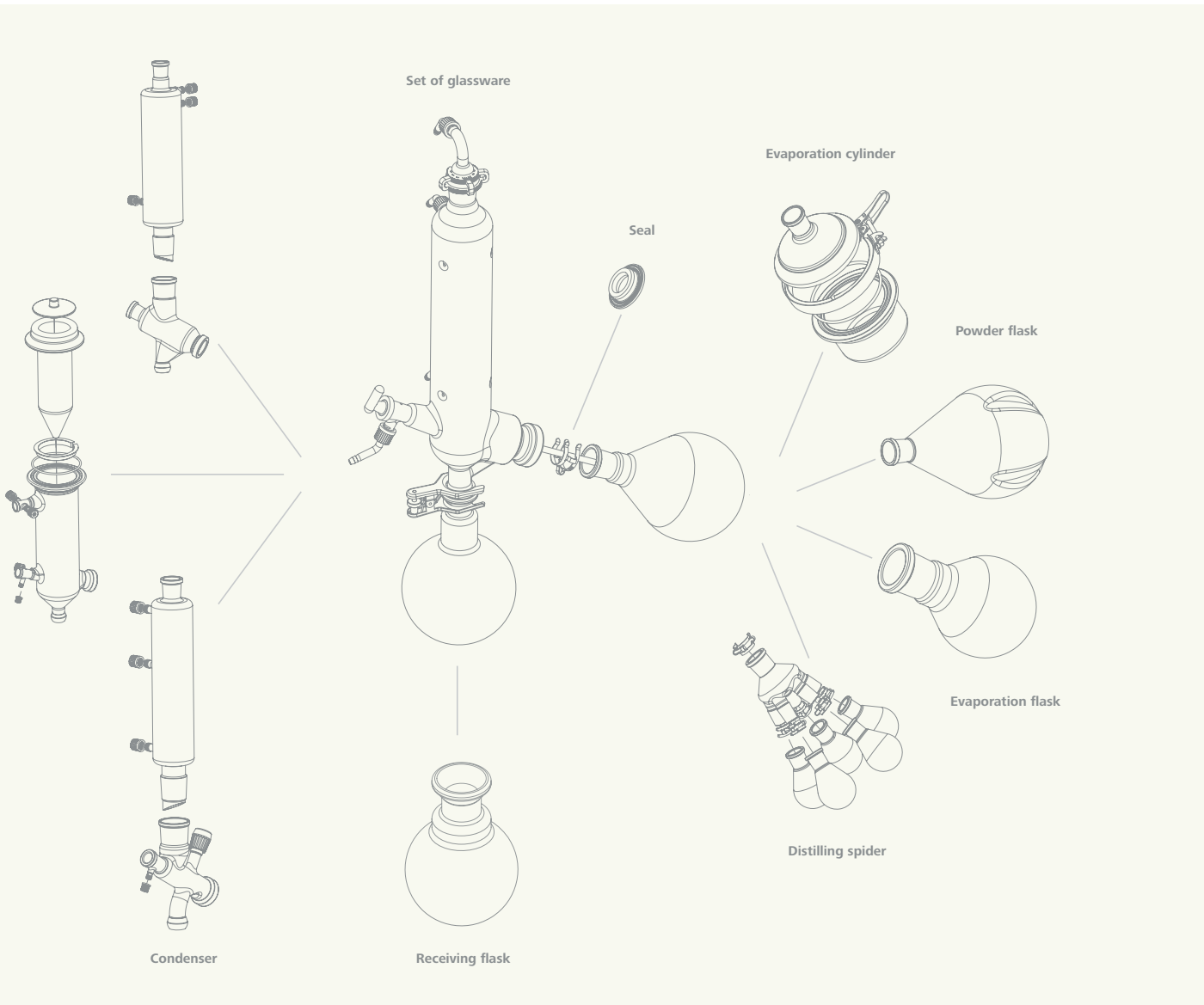
GENERAL DATA

/// Comparison

	RV 8	RV 10 digital	RV 10 control
Drive			
Motor type	brushless DC drive motor	brushless DC drive motor	brushless DC drive motor
Motor rating input	50 W	50 W	50 W
Speed range	5 – 300 rpm	20 – 280 rpm	20 – 280 rpm
Speed display	digital	digital	digital
Clockwise and counter-clockwise	no	yes	yes
Soft start	yes	yes	yes
Head angle adjustable	0 to 45 °	0 to 45 °	0 to 45 °
Stroke displacement	130 mm, manual	140 mm, motorized	140 mm, motorized
Setting of lower end stop	no	60 mm, contact free	60 mm, contact free
Vacuum controller	optional	optional	integrated
Heating bath			
Bath volume max.	3 l	3 l	3 l
Temperature range	RT to +180 °C	RT to +180 °C	RT to +180 °C
Heating power	1,300 W	1,300 W	1,300 W
Temperature display	digital	digital	digital
Setting accuracy	1 °C	1 °C	1 °C
Control Deviation	± 1 K	± 1 K	± 1 K
General data			
Dimensions (W × D × H)	510 × 345 × 490 mm	530 × 410 × 430 mm	530 × 410 × 430 mm
Weight of the drive incl. heating bath without glass parts	17.2 kg	20 kg	21.5 kg
Permissible ambient temperature	+5 to +40 °C	+5 to +40 °C	+5 to +40 °C
Permissible relative moisture	80 %	80 %	80 %
Protection class according to DIN EN 60529	IP 20	IP 20	IP 20
Voltage / Frequency	220 – 240 V / 50/60 Hz	220 – 240 V / 50/60 Hz	220 – 240 V / 50/60 Hz

Accessories

/// Rotary Evaporators



1 | **RV 10.1 SET OF GLASSWARE, VERTICAL**

Compact vertical condenser for all standard distillations.
Glassware included in all packages, except FLEX

Details

RV 10.1 vertical, Ident. No. 0003655300
RV 10.10 vertical-coated, Ident. No. 0003755400

Condenser type	vertical
Cooling surface	1,500 cm²

2 | **RV 10.2 SET OF GLASSWARE, DIAGONAL**

Diagonal condenser for all standard distillations.

Details

RV 10.2 diagonal, Ident. No. 0003755300
RV 10.20 vertical-coated, Ident. No. 0003755500

Condenser type	diagonal
Cooling surface	1,500 cm²

3 | **RV 10.3 VERTICAL-INTENSIVE CONDENSER WITH MANIFOLD**

Vertical-intensive condenser with double jacket and manifold for particularly efficient condensation.

Details

RV 10.3, Ident. No. 0003741000
RV 10.30 coated, Ident. No. 0003741100

Condenser type	vertical-intensive
Cooling surface	1,400 cm²

4 | **RV 10.4 DRY ICE CONDENSER**

Dry ice condenser for distilling low-boiling point solvents.
Not possible with autodistillation mode on RV 10 control.

Details

RV 10.4, Ident. No. 0003742000
RV 10.40, Ident. No. 0003742100

Condenser type	dry ice condenser
Cooling surface	620 cm²

5 | **RV 10.5 VERTICAL CONDENSER WITH MANIFOLD AND CUT-OFF VALVE FOR REFLUX DISTILLATION**

The solvent to be distilled can be continuously fed through the PTFE inlet tube.
Requires RV 10.74 Vapor tube short.

Details

RV 10.5, Ident. No. 0003743000
RV 10.50 coated, Ident. No. 0003743100

Condenser type	vertical
Cooling surface	1,200 cm²

6 | **RV 10.6 VERTICAL-INTENSIVE CONDENSER WITH MANIFOLD AND CUT-OFF VALVE FOR REFLUX DISTILLATION**

The manifold features a condensate cover and an outlet channel which prevent the condensate from coming into contact with the seal.
Requires RV 10.74 Vapor tube short.

Details

RV 10.6, Ident. No. 0003744000
RV 10.60 coated, Ident. No. 0003744100

Condenser type	vertical-intensive
Cooling surface	1,400 cm²

7 | **RV 10.70 VAPOR TUBE NS 29/32**

Made of high quality borosilicate glass. For all glassware.
Included with each RV 10 package.

Details

RV 10.70, Ident. No. 0003812200

Material	borosilicate glass
----------	--------------------

8 | **RV 10.74 VAPOR TUBE SHORT NS 29/32**

Made of high quality borosilicate glass.
For vertical condensers RV 10.5 and RV 10.6.

Details

RV 10.74, Ident. No. 0003971700

Material	borosilicate glass
----------	--------------------

1 | **HB 10.1 SHIELD FOR HEATING BATH HB 10**

For optimal protection against splashes of hot liquid.

Details

HB 10.1, Ident. No. 0003641800

Material	polycarbonate
----------	---------------

2 | **HB 10.2 PROTECTION COVER FOR HEATING BATH**

Essential accessory if it is not possible to work in an extractor hood. Protects the user against splashes of hot liquid and in the event of the evaporator flask breaking.

Details

HB 10.2, Ident. No. 0003641000

Material	polycarbonate
----------	---------------

3 | **POWDER FLASK NS 29/32**

Optimizes powder drying applications by avoiding the accumulation of powder on the walls of the flask.

Details

RV 10.300, 500 ml, Ident. No. 0003738200
RV 10.301, 1,000 ml, Ident. No. 0003738300
RV 10.302, 2,000 ml, Ident. No. 0003738400

Volume (in ml)	500, 1,000, 2,000
----------------	-------------------

Material	borosilicate glass
----------	--------------------

4 | **EVAPORATION CYLINDER NS 29/32**

Makes retrieval of viscous substances easy.

Details

RV 10.400, 500 ml, Ident. No. 0003738800
RV 10.401, 1,500 ml, Ident. No. 0003738900

Volume (in ml)	500, 1,500
----------------	------------

Material	borosilicate glass
----------	--------------------

5 | **RV 10.500 FOAM BRAKE NS 29/32**

The rising foam produces bursts in the glass ball extension. This stops foam from entering the receiving flask.

Note: When using a 3 liter evaporation flask, RV 10.3000 extension plate is required.

Details

RV 10.500, Ident. No. 0003739200

Material	borosilicate glass
----------	--------------------

6 | **RV 10.3000 EXTENSION PLATE**

Accessories required when using RV 10.500 Foam brake.

Note: Allows the heating bath to be moved 150 mm horizontally. Accessories required when using the RV 10.500 foam brake and 3 liter evaporation flask.

Details

RV 10.3000, Ident. No. 0003859000

Dimensions	200 × 270 × 27 mm
------------	-------------------



1 | **HB 10.1**



2 | **HB 10.2**



3 | **Powder flask**



4 | **Evaporation cylinder**



5 | **RV 10.500**



6 | **RV 10.3000**



7 | **RV 10.606**



8 | **RV 10.600**



9 | **RV 10.80**



10 | **RV 10.100**



11 | **RV 10.8001**



12 | **RV 05.10**



12 | **RV 10.88**



12 | **RV 10.5005**



12 | **RV 8.1**



12 | **RV 8.2**



12 | **RV 8.3**

7 | **DISTILLING SPIDER WITH 5 FLASKS NS 29/32**

For simultaneous distillation in 5 evaporation flasks, included with purchase.

Details

RV 10.606, 50 ml, Ident. No. 0003740800
RV 10.607, 100 ml, Ident. No. 0003740900

Volume (in ml)	50, 100
----------------	---------

Material	borosilicate glass
----------	--------------------

8 | **DISTILLING SPIDER WITH DISTILLING SLEEVES NS 29/32**

For simultaneous distillation in 6, 12 or 20 distilling sleeves, included with purchase.

Details

RV 10.600, 6 distilling sleeves, Ident. No. 0003739400
RV 10.601, 12 distilling sleeves, Ident. No. 0003739500
RV 10.602, 20 distilling sleeves, Ident. No. 0003739600
RV 10.610, 20 ml, Ident. No. 0003919400

Material	borosilicate glass
----------	--------------------

9 | **EVAPORATION FLASK NS 29/32**

The flask, which is made of high quality borosilicate glass, is available in seven different sizes.

Details

RV 10.80, 50 ml, Ident. No. 0003740100
RV 10.81, 100 ml, Ident. No. 0003740200
RV 10.82, 250 ml, Ident. No. 0003740300
RV 10.83, 500 ml, Ident. No. 0003740400
RV 10.84, 1,000 ml, Ident. No. 0003740500
RV 10.85, 2,000 ml, Ident. No. 0003740600
RV 10.86, 3,000 ml, Ident. No. 0003740700

RV 10.800 coated, 50 ml, Ident. No. 0020005330*
RV 10.810 coated, 100 ml, Ident. No. 0020005331*
RV 10.820 coated, 250 ml, Ident. No. 0020005332*
RV 10.830 coated, 500 ml, Ident. No. 0020005333*
RV 10.840 coated, 1,000 ml, Ident. No. 0004221400*
RV 10.850 coated, 2,000 ml, Ident. No. 0020005334*
RV 10.860 coated, 3,000 ml, Ident. No. 0020005335*

Volume (in ml)	50, 100, 250, 500, 1,000, 2,000, 3,000
----------------	---

Material	borosilicate glass
----------	--------------------

10 | **RECEIVING FLASK KS 35/20**

The flask, which is made of high quality borosilicate glass, is available in six different sizes, either coated or uncoated.

Details

RV 10.100, 100 ml, Ident. No. 0003742200
RV 10.101, 250 ml, Ident. No. 0003742300
RV 10.102, 500 ml, Ident. No. 0003742400
RV 10.103, 1,000 ml, Ident. No. 0003742500
RV 10.104, 2,000 ml, Ident. No. 0003742600
RV 10.105, 3,000 ml, Ident. No. 0003742700

RV 10.200 coated, 100 ml, Ident. No. 0003743200
RV 10.201 coated, 250 ml, Ident. No. 0003743300
RV 10.202 coated, 500 ml, Ident. No. 0003743400
RV 10.203 coated, 1,000 ml, Ident. No. 0003743500
RV 10.204 coated, 2,000 ml, Ident. No. 0003743600
RV 10.205 coated, 3,000 ml, Ident. No. 0003743700

Volume (in ml)	100, 250, 500, 1,000, 2,000, 3,000
----------------	---------------------------------------

Material	borosilicate glass
----------	--------------------

* About the coated evaporating flask the coating could be use if the customer is working with oil and up to an temp. from +180 °C.

Unique to IKA

11 | **RV 10.8001 SEAL**

New airtight lip-seal from PTFE with a built-in stainless steel spring.

Details

RV 10.8001, Ident. No. 0003907000

Material	PTFE, stainless steel
----------	-----------------------

12 | **OTHER ACCESSORIES**

Details


RV 05.10 balljoint clamp, Ident. No. 0000736600
RV 10.88 clamp, NS 29, Ident. No. 0003683300
RV 10.5005 hose kit, Ident. No. 0020000552

RV 8 Accessories

RV 8.1 support pole, Ident. No. 0004438500
RV 8.2 mechanical end stop, Ident. No. 0025001342
RV 8.3 stand pole, Ident. No 0025004707

Accessories

/// Selection guide

	ACCESSOIRES OVERVIEW		
	/// Comparison		
	RV 8	RV 10 digital	RV 10 control
Required accessories for an existing vacuum			
Magnetic valve in-house vacuum system	x ¹⁾	x ¹⁾	RV 10.4001
Magnetic valve laboratory vacuum system	x ¹⁾	x ¹⁾	RV 10.4002
Pump control including magnetic valve	x ¹⁾	x ¹⁾	RV 10.4003
Recommended accessories for tap water (faucet) connection			
Choke water valve	–	–	RV 10.5001
Filter	–	–	RV 10.5002
Pressure regulating valve	RV 10.5003	RV 10.5003	RV 10.5003
Supplementary vacuum system			
Vacuum system	MVP 10 basic + VSS 1 + VCV 1	MVP 10 basic + VSS 1 + VC 10	MVP 10 basic
Additional chiller system			
for one rotary evaporator	RC 2 basic	RC 2 basic	RC 2 basic

1) No accessories required for vacuum pump connection (vacuum level must be controlled by external vacuum controller).



RV 8



RV 10 digital



RV 10 control



RV 10.4001 MAGNETIC VALVE IN-HOUSE VACUUM

Industrial vacuum source for many different in-house users; usually fixed pipes.
Accessory required for an existing vacuum.

Details	
RV 10.4001, Ident. No. 0003902600	
Power	24 V / 9 W
Weight	0.142 kg



RV 10.4002 MAGNETIC VALVE LABORATORY VACUUM

High quality vacuum valve for an optimum controlled operation. The integrated check valve eliminates external influence on the operating pressure in the vacuum chamber.
Accessory required for an existing vacuum.

Details	
RV 10.4002, Ident. No. 0003880300	
Power	24 V / 6 W
Weight	0.142 kg
Integrated check valve	yes



RV 10.4003 PUMP CONTROL INCL. MAGNETIC VALVE

One rotary evaporator at one pump/tabletop operation. The pump only works when vacuum is needed – leading to a savings of up to 90 % of operating time, increased equipment life and reduction of noise. Integrated LED display.
Accessory required for an existing vacuum.
For non EU countries a plug adapter is required.

Details	
RV 10.4003, Ident. No. 0003900200	
Power magnetic valve	24 V / 6 W
Power pump control	100 – 240 V, 50/60 Hz
Weight	0.142 kg



RV 10.5001 CHOKE WATER VALVE

The integrated magnetic valve closes/opens the water circuit during automatic distillation.
Accessory recommended for tap water connection.

Details	
RV 10.5001, Ident. No. 0003902700	
Power	24 V / 6 W
Connection diameter	10 mm
Integrated fine adjustment	yes
Weight	0.142 kg

RV 10.5002 FILTER

To prevent contamination of the water pipes. With removable filter for easy cleaning.
Accessory recommended for tap water connection.

Details	
RV 10.5002, Ident. No. 0003903800	
Mesh thickness	100 µm
Connection diameter	10 mm
Pressure	max. 11 bar



RV 10.5003 PRESSURE REGULATING VALVE

For adjusting the cooling water pressure when connecting to a tap water system.
Accessory recommended for tap water connection.

Details	
RV 10.5003, Ident. No. 0003907100	
Mesh thickness	100 µm
Pressure	max. input 25 bar

Accessoires

/// Rotary Evaporators



MVP 10 BASIC
For dry, oil-free applications in the low vacuum range.

Details	
MVP 10 basic, Ident. No. 0003980000	
Cylinder	2
Flow rate	28 l / min
Ultimate vacuum	7 mbar
Pumping speed	1,8 m³/h
Operating pressure	1 bar
Weight	11.5 kg
Dimensions	245 x 320 x 155 mm
Permissible ambient temperature	+10 to +40 °C
Motor protection	IP 54
Voltage / Frequency	220 – 240 V / 50/60 Hz

Y connector + 1m vacuum tube is included in the scope of delivery.



RC 2 BASIC | CONTROL
Refrigerated circulator designed for precise temperature control and cooling.

Details	
RC 2 basic, Ident. No. 0004171000 RC 2 control, Ident. No. 0004173000	
Temperature range	- 20 °C to RT
Temperature display	LED TFT
Temperature stability DIN 12876	± 0.1 K ± 0.05 K
Cooling capacity at +20 °C	400 W
Dimensions	220 x 475 x 525 mm
Permissible ambient temperature	+5 to +32 °C
Motor protection	IP 21
Voltage / Frequency	220 – 240 V / 50/60 Hz

NEW!



- VC 10**
- › manual and program mode
 - › cleaning function for long valve lifecycles
 - › ceramic pressure sensor with outstanding resistance to chemicals
 - › programmable function for up to 10 scenarios
 - › An integrated ventilation valve enables simple pressure equalization and aeration with inert gas on process completion. In addition, the VENT short key button allows pressure equalization during an operation run.

Ident. No. 0020004893

Y connector + 1m vacuum tube is included in the scope of delivery.



VC 10 VACUUM CONTROLLER
Universal vacuum controller for multiple vacuum sources.

Details	
VC 10, Ident. No. 0020004893	
Vacuum sensor	Ceramic, Al ₂ O ₃
Measuring range	1 – 1,100 mbar
Measuring accuracy	± 1 mbar
Hose connections	ID 8 mm
Housing material	Plastic
Dimensions (W x H x D)	95 x 110 x 150 mm
Interface	USB + RS 232
Mains voltage	100 – 240 V



VCV 1 vacuum control valve manual

- › Allows for adjusting the set vacuum value on the manual manometer.

Ident. No. 0020004850



VCV 2 vacuum control valve digital

- › Allows for adjusting the set vacuum value on the digital manometer.

Ident. No. 0020004893

VSS 1 vacuum safety set

- › The Woulff bottle is a condensate trap connected ahead of the vacuum pump to prevent vapors from being released into the air.

Ident. No. 0020005194



VSS 1 stand and glassware

N 920 SPEED CONTROL PUMP

Allows high suction speed even in the low-vacuum range.

Details

N 920*, Ident. No. 0003919100 | Ident. No. 0004406000



Max. flow rate	20 l / min
Ultimate vacuum	2 mbar
Operating pressure	0.5 bar
Connectors for tube	ID 9 mm
Permissible ambient temperature	+5 to +40 °C
Dimensions (W × D × H)	324 × 158 × 226 mm
Weight	8.6 kg
Motor protection	IP 20
Voltage / Frequency	90 – 230 V / 50/60 Hz



* Additional external vacuum controller required. |
For use with RV 8, RV 10 digital and control.

RV 8 V complete solution

/// Entry-level system



INCLUDES
RC 2 BASIC,
MVP 10 AND RV 8

RV 8 V complete solution

- › RV 8 V rotary evaporator
- › RC 2 basic chiller
- › MVP 10 basic vacuum pump
- › VCV 1 vacuum controller
- › H.SI.8 tube
- › RV 10.8001 seal

Ident. No. 0010002484



BENEFITS

- › the entry level rotary evaporator from IKA
- › with manual, effortless lifting mechanism and locking function
- › compatible with the complete range of IKA glassware
- › universal water / oil heating bath
- › digital displays for rotation and speed and heating bath temperature



INCLUDED IN PACKAGE

/// RC 2 basic chiller + MVP 10 basic vacuum pump + VCV 1 vacuum controller + H.SI.8 tube + 2 x RV 10.8001 seal



RV 10 control auto solution

/// Package offer

HIGH PERFORMANCE SOLUTION!

INCLUDED IN PACKAGE
/// RC 2 basic chiller +
H.PUR.8.R hose



High performance vertical cooling condenser (different options available).



Two digital displays for an optimal overview.



Heating bath can be used separately, ergonomic carrying handles on heating bath.



Adjustable **safety stop**.

SAFE ENERGY WITH
STANDBY-MODE IF NO
DESTILLATION IS RUNNING!

- RV 10 control auto solution***
- > RV 10 control auto rotary evaporator
 - > RC 2 basic chiller
 - > H.PUR.8.R hose

Ident. No. 0010001506



*Package is also available without chiller and hose.

FLEX-ibility with the IKA RV FLEX packages

/// FLEX packages

The IKA FLEX packages enable the FLEX-ibility of customizing the glassware setup for specific applications.



Step 1
Choose your FLEX base model.



Step 2
Select individual glassware:
› condenser
› evaporation flask
› receiving flask



Step 3
Configured RV 8 FLEX Package with selected glassware.

- RV 8 FLEX package**
- › RV 8 drive
 - › HB 10 heating bath
 - › clamps for glassware, incl. Woulff bottle.

Ident. No. 0010002166

- RV 10 digital FLEX package**
- › RV 10 digital drive
 - › HB 10 heating bath
 - › clamps for glassware, incl. Woulff bottle.

Ident. No. 0008040500

- RV 10 control FLEX package**
- › RV 10 control drive
 - › HB 10 heating bath
 - › clamps for glassware, incl. Woulff bottle.
 - › RV 10.4002 magnetic valve

Ident. No. 0008038100

- RV 10 control FLEX auto package**
- › RV 10 control drive
 - › HB 10 heating bath
 - › clamps for glassware, incl. Woulff bottle.
 - › N 920 speed controlled pump

Ident. No. 0008038200

labworldsoft® software

/// Advanced software used for lab automation

IKA's software labworldsoft® has an innovative approach to lab automation. It enables the networking of up to 64 laboratory devices which can be controlled simultaneously via one PC. Not only IKA products, but also other manufacturers laboratory devices can be integrated using labworldsoft®.

This makes the automation of your laboratory experiments and processes much more easy and efficient.



labworldsoft® software

Ident. No. 0004720000

TRY IT FOR YOURSELF
Get your free, fully functional 30 day trial version download at: www.ika.com

HARDWARE AND SOFTWARE REQUIREMENTS
/// labworldsoft® software, Ident. No. 0004720000

Pentium processor with at least 16 MB RAM, 8 MB free hard disc memory, VGA-Display: monochrome with at least 16 levels of gray or color, Windows 95/98/2000/NT/ME/XP/7 and com ports can be upgraded for certain requirements.

IKA Service

/// FAQ

- What minimum vacuum can be reached with the RV 10 system (with coated glassware)?**
If all vacuum connections are sealed vacuum tight and the vacuum system is strong enough, down to 1 mBar.
- Is it better to use a vertical or a diagonal condenser?**
It does not matter for the application. Both condensers have the same cooling surface and power.
- What is the diameter of the hose to refill the evaporating flask with medium in the RV 10 system and what is it made of?**
The hose has a diameter of 5 mm and is made of PTFE (Teflon).
- Is there a warning system when the heating bath HB 10 is still hot?**
Yes. The message "HOT" will be blinking for as long as the water bath temperature exceeds +60 C.
- Is it possible to move the heating bath HB 10 in the RV 10 system?**
Yes, it can be moved 50 mm horizontally and can also be used as a stand-alone unit.
- Which rotary evaporator system is the right one for my application?**
What accessories are needed?
On www.ika.com you can use the RV 10 configurator that guides you through the process of choosing the appropriate system for your application needs.
- Can I perform a continuous distillation with IKA rotary evaporator system and 3 l flask?**
Yes, even with a 3 liter receiving flask you can do a continuous distillation. Simply use the PTFE tube that comes with the glassware. Use this by opening up the vacuum shut-off valve to refill while under vacuum. The loss of vacuum pressure is little and will be stabilized by the vacuum pump.
- Is it necessary to measure vapor temperature inside the flask?**
No, IKA rotary evaporators are controlled by measuring the temperature of the cooling water flow.
- I work with samples that foam easily. How can I prevent foaming over into the cooling coil?**
Simply use our foam brake/bump trap listed under our accessories. It stops foam from entering the cooling coil or receiving flask.

APPLICATION SUPPORT

For questions regarding applications and processes, you can call our free hotline number:
00 8000 4522777 (00 8000 IKAAPPS)*
eMail: applicationsupport@ika.de

Monday – Thursday from 8:30 – 16:30 CET
Friday from 8:30 – 15:30 CET

Customizing Center

/// www.ika.com/customizingcenter

It is important that IKA products perform in real laboratory applications. We have a special program of product solutions that are customized to your individual needs. If you cannot find the right device in our standard product range, please send us the details of the specification you need using the online form. Our team will check the feasibility of the specification and offer you a solution.

Please visit www.ika.com/customizingcenter to have look at the product modification requests that we have already implemented.

Trial units

/// Rotary evaporators

If you are interested in our rotary evaporators and would like to try it for your application, please contact us at sales@ika.net for a free one week trial. We look forward to hearing from you.

30 day money back guarantee

/// Contact

Purchase our unit and if it doesn't work for your application, you can return it to IKA. Contact us at sales@ika.net.

Worldwide service network

/// Direct contacts in your region

Our dedicated team of engineers provides comprehensive technical service on a global level. If you have any questions, please do not hesitate to contact IKA directly. Alternatively, you can get in touch with your dealer.

IKA guarantees that spare parts will be available for 10 years. In the event of any faults with a device, or if you have any technical questions regarding our products, their maintenance or replacement parts, please call us at **00 8000 4524357** (00 8000 IKAHELP) or send an eMail to **service@ika.de**

IKA Application Support

/// www.ika.com/applicationsupport

Our Application Center spans 400 m² and is equipped with the most modern facilities for presenting and testing laboratory equipment and processes. The Center brings us even closer to our customers and improves our service. If you are interested, you can use our facilities to test processes that include stirring, shaking, dispersing, grinding, heating, analysis and distillation.

Call us on **00 8000 4522777 (00 8000 IKAAPPS)** or send an email to **applicationsupport@ika.de** or visit our website at **www.ika.com/applicationsupport**.



Our Application Center covers **400 m²** and offers modern equipment for demonstrating and testing laboratory devices and processes.



Send us your sample. We will run a test with the suitable device - within 48 hours.



We would be happy to help you find the **perfect device** for your application.



Interested individuals and customers can **test processes** including stirring, shaking, dispersing, milling, heating, analyzing and distilling.



designed for scientists

EN

IKA-Werke GmbH & Co. KG

Janke & Kunkel-Straße 10, 79219 Staufen, Germany

Phone: +49 7633 831-0, Fax: +49 7633 831-98

eMail: sales@ika.de

/// WORLDWIDE

USA

IKA Works, Inc.

Phone: +1 910 452-7059

eMail: sales@ika.net

MALAYSIA

IKA Works (Asia) Sdn Bhd

Phone: +60 3 6099-5666

eMail: sales.lab@ika.my

JAPAN

IKA Japan K.K.

Phone: +81 6 6730 6781

eMail: info_japan@ika.ne.jp

KOREA

IKA Korea Ltd.

Phone: +82 2 2136 6800

eMail: info@ika.kr

CHINA

IKA Works Guangzhou

Phone: +86 20 8222 6771

eMail: info@ika.cn

INDIA

IKA India Private Limited

Phone: +91 80 26253 900

eMail: info@ika.in

BRASIL

IKA do Brasil

Phone: +55 19 3772-9600

eMail: info@ika.net.br

POLAND

IKA Poland Sp. z o.o.

Phone: +48 22 201 99 79

eMail: sales.poland@ika.com

ENGLAND

IKA England LTD.

Phone: +44 1865 986 162

eMail: sales.english@ika.com

/// ONLINESHOP

For more information on our products or to order online, please visit:

www.ika.com/distillation

/// SOCIAL MEDIA



IKAworldwide



IKAworldwide /// #lookattheblue



@IKAworldwide

Prices are valid until December 31, 2017.

All prices exclude VAT.

IKA reserves the right to modify products,
part numbers, and pricing.

Drive: Protection class according to DIN EN 60529: IP 20

Heating bath: Protection class according to DIN EN 60529: IP 21