

**D**LAB



2019



CENTRIFUGES



THERMAL CONTROL



MIXING & HEATING



DISTILLING



LIQUID HANDLING



MISCELLANEOUS



## Company Profile

DLAB Scientific Co., Ltd, known as Dragon Lab - Founded in 2002, is now one of the leading companies worldwide for high quality laboratory instruments and equipment for industries, diagnostics and research.

All our products are designed and manufactured in accordance with ISO9001/13485 by our dedicated and experienced R&D Engineering team. Our quality control processes start from the metal processing all the way through to the final inspections of the end products and adhere to worldwide accepted quality standards.

With growing international presence and to create a new corporate identity, we have created a new brand "DLAB". Consequently, Dragon Laboratory Instruments changed to DLAB Scientific, the original manufacturer of bench top equipments. DLAB has subsidiaries in USA as DLAB Scientific Inc. and in India as DLAB Scientific Private Limited.

DLAB Scientific Co., Ltd is committed to become a one-stop partner for distributors worldwide with a growing range of general laboratory instruments. Our products are characterized by reliability, high accuracy and have a highly competitive value along with skilled application and after-sales support.

Our brands include: DRAGONLAB™, DLAB™, DRAGONMED™, DRAGON™ and so on.

*"DLAB is always your accessible solution"*



# Contents



## Liquid Handling

- Thermal Cyclers / 21
- Dry Bath / 23
- Thermo Mix / 25



## Distilling

- Electronic Pipette / 03
- Mechanical Pipettes / 05
- Pipette Fillers / 11
- Pipette Controllers & Pumps / 13
- Stepper / 14
- Electronic Titrator / 16
- Electronic Bottle-Top Dispenser / 17
- Bottle-Top Dispensers / 18
- Vacuum Aspiration System / 19



## Thermal Control

- Rotary Evaporator / 28
- Low Temperature Circulator / 32
- Vacuum Controller / 34



## Mixing & Heating

- Palm Micro Centrifuges / 61
- High Speed Micro-Centrifuges / 63
- Low-speed Centrifuges / 73



## Miscellaneous

- Magnetic Hotplate Stirrers / 37
- Hotplates / 50
- Magnetic Stirrers / 51
- Overhead Stirrers / 55
- Homogenizers / 58



## Centrifuges

- Vortex Mixers / 85
- Microplate Mixers / 87
- Rotators / 88
- Rocking Rotators / 91
- Tube Rollers / 92
- Shakers / 93
- Spectrophotometers / 103
- GelSMART / 106
- Sterilizer / 108

DLAB products are manufactured in accordance with ISO9001 and ISO13485. All products comply with EU and North America standards, CE, cTUVus, FCC marked and subjected to the strict QC control.

DLAB instruments are tested and conform to the following safety and EMC standards:

EN 61010-1 UL 3101-1 CAN/CSA C22.2(1010-1)

EN 61010-2-10 EN 61326-1 EMC-guidelines: 89/336/EWG Instrument guidelines: 73/023/EWG

# Liquid Handling





## dPette+ Multifunction Electronic Pipette

## dPette Simple Electric Pipette

### Features

- High accuracy, high performance stepper motor ensures accuracy and repeatability, eliminating manual pipetting errors
- A motor driven digital control pipette with multifunction
- 2 buttons handle all operational settings
- Light weight, ergonomic design, small body dimension for easy handling that guarantees fatigue free pipetting
- Pipetting, Mixing, Stepper and Dilution(Only dPette+)
- Pipetting, Mixing(dPette)
- Adjustable speeds for aspiration and dispensing
- Li-ion battery and dual charging modes enable longer operation time
- Self calibration – dPette can be connected to a PC via. USB for calibration by the user. Third party calibration is not required



**dPette+**

**dPette**

### Specifications

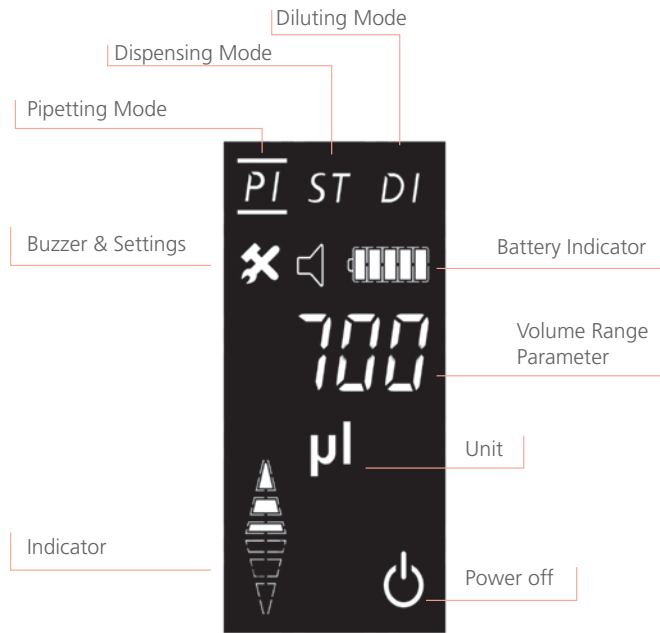
Channels	Volume Range	Increment	Test Volume	Error limits in accordance to ISO8655-2			
				accuracy error		precision error	
				$\mu\text{L}$	%	s.d.* $\mu\text{L}$	CV%*
1	0.5-10	0.01	10	$\pm 0.10$	$\pm 1.00$	0.05	0.50
			1	$\pm 0.035$	$\pm 3.50$	0.03	3.00
1	5-50	0.1	50	$\pm 0.40$	$\pm 0.80$	0.15	0.30
			5	$\pm 0.15$	$\pm 3.00$	0.125	2.50
1	30-300	1	300	$\pm 1.80$	$\pm 0.60$	0.60	0.20
			30	$\pm 0.90$	$\pm 3.00$	0.21	0.70
1	100-1000	5	1000	$\pm 6.00$	$\pm 0.60$	2.00	0.20
			100	$\pm 3.00$	$\pm 3.00$	0.60	0.60

\* s.d. = Standard Deviation

\*CV = Coefficient of Variation

# Electronic Pipette

dPette is an innovative electronic pipette developed by DLAB. It combines the feature of manual pipette as ergonomic and light weight with the feature of electronic pipette as labor-saving and high performance, it offers new pipetting experience to the users.





## MicroPette plus

121°C  
FULLY  
Autoclavable

### Features

- Fully autoclavable
- Ergonomic design provides excellent operating experience
- Easy-to-read volume display
- The pipettes cover the volume range from 0.1µL to 5mL
- Easy calibration and maintenance
- Manufactured from innovative materials
- Each MicroPette Plus supplied with an
- Individual calibration certificate according to ISO8655
- Online calibration is available



## MicroPette plus multi-channel

121°C  
FULLY  
Autoclavable

### Features

- Dispensing head rotates for effortless pipetting convenience
- Individual piston and tip cone assembly allow for easy repair and maintenance
- Compound material-made tip cone secures high sealing performance
- Compatible with most universal tip brands
- Online calibration is available



# Mechanical Pipettes



## Fully autoclavable

The MicroPette Plus pipettes are fully autoclavable, enable easy cleaning and reduce the risk of contamination. Steam autoclaving can be performed at 121°C, 1 bar for 20 minutes. After autoclaving, the pipette must be cooled down and left to dry for 12 hours before use.

It is recommended to check the performance of the pipette after each autoclaving. Greasing and sealing of the pipette piston after every 10th autoclaving will secure an enhanced function.





## MicroPette

### Features

- Pipettes cover a volume range from 0.1µL to 10mL
- Ergonomic design provides excellent operating experience
- Large display window allows for easy volume identification
- Easy calibration and maintenance
- Each MicroPette supplied with an individual calibration certificate according to ISO8655
- Online calibration is available

121°C  
HALF  
Autoclavable



## MicroPette multi-channel

121°C  
HALF  
Autoclavable

### Features

- 8 and 12 channel pipettes are appropriate for 96 well plates
- Dispensing head rotates for effortless pipetting convenience
- Individual piston and tip cone assemblies allowing easy repair and maintenance
- Compound material-made tip cone secures high sealing performance
- Compatible with most universal tip brands
- Online calibration is available



# Mechanical Pipettes



8 channels

## Calibration

All DLAB pipettes have been quality tested according to ISO8655-2:2002 and are supplied with individual calibration certificates. The quality control includes gravimetric testing of each pipette with distilled water at 22°C. Our website [www.dlabsci.com](http://www.dlabsci.com) allows users to access DLAB online calibration software and achieve accurate and timely calibration.

Online calibration software is FREE to DLAB pipette users



# Mechanical Pipette Volume Selection

## Specifications

This list is appropriate for MicroPette and MicroPette plus (Adjustable and Fixed volume)

### Single-channel Adjustable Volume Pipettes

Volume Range	Increment	Test Volume	Error limits in accordance with ISO8655-2			
			(Accuracy error)		(Precision error)	
			%	µL	%	µL
0.1-2.5µL	0.05µL	2.5µL	2.50%	0.0625	2.00%	0.05
		1.25µL	3.00%	0.0375	3.00%	0.0375
		0.25µL	12.00%	0.03	6.00%	0.015
0.5-10µL	0.1µL	10µL	1.00%	0.1	0.80%	0.08
		5µL	1.50%	0.075	1.50%	0.075
		1µL	2.50%	0.025	1.50%	0.015
2-20µL	0.5µL	20µL	0.90%	0.18	0.40%	0.08
		10µL	1.20%	0.12	1.00%	0.1
		2µL	3.00%	0.06	2.00%	0.04
5-50µL	0.5µL	50µL	0.60%	0.3	0.30%	0.15
		25µL	0.90%	0.225	0.60%	0.15
		5µL	2.00%	0.1	2.00%	0.1
10-100µL	1µL	100µL	0.80%	0.8	0.15%	0.15
		50µL	1.00%	0.5	0.40%	0.2
		10µL	3.00%	0.3	1.50%	0.15
20-200µL	1µL	200µL	0.60%	1.2	0.15%	0.3
		100µL	0.80%	0.8	0.30%	0.3
		20µL	3.00%	0.6	1.00%	0.2
50-200µL	1µL	200µL	0.60%	1.2	0.15%	0.3
		100µL	0.80%	0.8	0.30%	0.3
		50µL	1.00%	0.5	0.40%	0.2
100-1000µL	5µL	1000µL	0.60%	6	0.20%	2
		500µL	0.70%	3.5	0.25%	1.25
		100µL	2.00%	2	0.70%	0.7
200-1000µL	5µL	1000µL	0.60%	6	0.20%	2
		500µL	0.70%	3.5	0.25%	1.25
		200µL	0.90%	1.8	0.30%	0.6
1000-5000µL	50µL	5000µL	0.50%	25	0.15%	7.5
		2500µL	0.60%	15	0.30%	7.5
		1000µL	0.70%	7	0.30%	3
2-10mL	0.1mL	10mL	0.60%	60	0.20%	20
		5mL	1.20%	60	0.30%	15
		2mL	3.00%	60	0.60%	12

# Mechanical Pipette Volume Selection

## 8-channel Adjustable Volume Pipettes

Volume Range	Increment	Test Volume	Error limits in accordance with ISO8655-2			
			(Accuracy error)		(Precision error)	
			%	µL	%	µL
0.5-10µL	0.1µL	10µL	1.50%	0.15	1.50%	0.15
		5µL	2.50%	0.125	2.50%	0.125
		1µL	4.00%	0.04	4.00%	0.04
5-50µL	0.5µL	50µL	1.00%	0.5	0.50%	0.25
		25µL	1.50%	0.375	1.00%	0.25
		5µL	3.00%	0.15	2.00%	0.1
50-300µL	5µL	300µL	0.70%	2.1	0.25%	0.75
		150µL	1.00%	1.5	0.50%	0.75
		50µL	1.50%	0.75	0.80%	0.4

## 12-channel Adjustable Volume Pipettes

Volume Range	Increment	Test Volume	Error limits in accordance with ISO8655-2			
			(Accuracy error)		(Precision error)	
			%	µL	%	µL
0.5-10µL	0.1µL	10µL	1.50%	0.15	1.50%	0.15
		5µL	2.50%	0.125	2.50%	0.125
		1µL	4.00%	0.04	4.00%	0.04
5-50µL	0.5µL	50µL	1.00%	0.5	0.50%	0.25
		25µL	1.50%	0.375	1.00%	0.25
		5µL	3.00%	0.15	2.00%	0.1
50-300µL	5µL	300µL	0.70%	2.1	0.25%	0.75
		150µL	1.00%	1.5	0.50%	0.75
		50µL	1.50%	0.75	0.80%	0.4

## Fixed Volume Pipettes

Volume Range	Increment	Test Volume	Error limits in accordance with ISO8655-2			
			(Accuracy error)		(Precision error)	
			%	µL	%	µL
5µL	-	5µL	1.3%	0.065	1.2%	0.06
10µL	-	10µL	0.8%	0.08	0.8%	0.08
20µL	-	20µL	0.6%	0.12	0.5%	0.1
25µL	-	25µL	0.5%	0.125	0.3%	0.075
50µL	-	50µL	0.5%	0.25	0.3%	0.15
100µL	-	100µL	0.5%	0.5	0.3%	0.3
200µL	-	200µL	0.4%	0.8	0.2%	0.4
250µL	-	250µL	0.4%	1.0	0.2%	0.5
500µL	-	500µL	0.3%	1.5	0.2%	1.0
1000µL	-	1000µL	0.3%	3.0	0.2%	2.0
2000µL	-	2000µL	0.3%	6.0	0.15%	3.0
5000µL	-	5000µL	0.3%	15	0.15%	7.5



## Levo Plus Pipette Filler

### Features

- Compatible with most of the plastic and glass pipettes from 0.1 -100mL
- Eight speeds of selection for aspiration and dispensing different liquids
- Large LCD display showing low battery warning and speed settings
- Enables single-handed operation with minimum effort
- Light and ergonomic design providing easy usability
- High capacity Li-ion battery enable long runtime of operation
- Powerful pump fills a 25mL pipette in <7 seconds
- 0.45µm replaceable hydrophobic filter
- Rechargeable during use

Large LCD display showing low battery warning and speed settings

Select the desired coarse speed by pressing the button +/-



Aspiration operation buttons

Operating button for motor and gravity dispensing

Hydrophobic filter 0.45µm

Silicone adapter for 0.1-100mL pipette tip, fully autoclavable



### Specifications

Aspiration Speed	25mL<7s (8 shift)
Dispensing Speed	Motor (8 shift)/Gravity
Battery	Lithium-ion
Battery Service Life	More than 8 Hours of Intermittence Use
Charging Time	2-3 Hours
Pipette Types	Glass or Plastic Pipette (0.1-100mL), Pasteur Pipettes
Filter	0.45µm Hydrophobic
Weight	200g

# Pipette Filler

## Levo ME Pipette Filler

Levo ME pipette filler has an excellent feature and ergonomic design, suitable for almost all commonly used glass or plastic pipettes.

### Features

- Enables single-handed operation with minimum effort
- Compatible with most of the plastic and glass pipettes from 0.1-100mL
- Easily adjustable speed control
- 0.45µm replaceable hydrophobic filter
- Stable and reliable performance, elegant appearance
- High capacity Li-ion battery enable long operation time.



### Specifications

Aspiration Speed	25ml<7s
Dispensing Speed	Motor/Gravity
Battery	Lithium-ion
Battery Service Life	More than 8 Hours of Intermittence Use
Charging Time	2-3 Hours
Pipette Types	Glass or Plastic Pipette (0.1-100mL), Pasteur Pipettes
Filter	0.45µm Hydrophobic
Weight	200g

# Pipette Controllers & Pumps

## Levo

### Pipette Controller

#### Features

- Ease of use
- Precise pipetting control
- Robust and light weight
- Compatible with most of the plastic and glass pipettes from 0.1 -100mL
- 3µm replaceable hydrophobic filter
- Easy cleaning and maintenance



Compress the suction bellows before attaching the pipette

Button to expel residual liquid when using blow-out pipette

Aspiration and dispensing comfortably achieved with a sensitive lever

## Levo E

### Pipette Pump

#### Features

- Volume capacity 2mL, 10mL and 25mL
- Colour-coded by volume with green, blue and red
- Thumb wheel guarantees precise operation
- Resistant to acids and alkalis
- Easy for cleaning and maintenance



3µm replaceable Hydrophobic filter

Silicone adapter for 0.1-100mL pipette tip, fully autoclavable



Designed for single-handed operation, Pipette Pump identifies itself with a thumbwheel, allowing precise aspiration or dispensing. The feature of side lever enables complete liquid dispensing, without a droplet remaining.



# Stepper

Based on the principle of positive displacement, StepMate Stepper is designed for trouble-free and reliable dispensing of liquids, especially for high viscosity, high density and high vapor pressure. The 48-step dispensing allows for enhanced accuracy and usability.

## StepMate Stepper

Optimized for smooth dispensing of even the smallest volumes

### Features

- Light and ergonomic solution provides easy usability
- Single-handed operation
- Volume range from 10 $\mu$ L to 5mL
- Up to 48 dispensing steps
- Maintenance free
- Equipped with durable tip
- insertion lever
- Fits seven sizes of disposable polypropylene syringes from 0.5mL to 50mL

Five easy-to-select settings control dispensing volume

By pushing the slide upwards, the syringe is filled up

### How to select dispensing volume

Find the required dispensing volume in the table  
Use the adjusting wheel to set the required volume  
Select and insert a suitable tip  
Follow the maximum dispensing steps

Tip volume

Dispensing Volume

Tips \ Sel	1	2	3	4	5
0.50ml	10 $\mu$ l	20 $\mu$ l	30 $\mu$ l	40 $\mu$ l	50 $\mu$ l
1.25ml	25 $\mu$ l	50 $\mu$ l	75 $\mu$ l	100 $\mu$ l	125 $\mu$ l
2.50ml	50 $\mu$ l	100 $\mu$ l	150 $\mu$ l	200 $\mu$ l	250 $\mu$ l
5.00ml	100 $\mu$ l	200 $\mu$ l	300 $\mu$ l	400 $\mu$ l	500 $\mu$ l
12.50ml	250 $\mu$ l	500 $\mu$ l	750 $\mu$ l	1000 $\mu$ l	1250 $\mu$ l
25.00ml	500 $\mu$ l	1000 $\mu$ l	1500 $\mu$ l	2000 $\mu$ l	2500 $\mu$ l
50.00ml	1000 $\mu$ l	2000 $\mu$ l	3000 $\mu$ l	4000 $\mu$ l	5000 $\mu$ l
Steps	48	23	15	11	8

Steps

The stop lever secures the syringe







DLAB stepper tips are particularly suitable for dispensing of fluids with high viscosity, high vapor pressure etc.

Tips are made from high-quality materials (Cylinder: PP, Piston: PE-HD) without soft lubricants or other additives.



## Specifications

Note: The first and last dispensing liquid should be discarded for precision.

Dial setting		1	2	3	4	5			
Number of steps		48	23	15	11	8			
Cat. No.	Syringe volume (mL)	Sample volume (μL)					A %	P %	Description
17900032	0.50	10	20	30	40	50	± 0.8	≤ 0.7	0.5mL, piston PE-HD, cylinder PP, 1 packing, 5 pcs/packing
17900033	1.25	25	50	75	100	125	± 0.8	≤ 0.5	1.25mL, piston PE-HD, cylinder PP, 1 packing, 5 pcs/packing
17900034	2.50	50	100	150	200	250	± 0.8	≤ 0.4	2.5mL, piston PE-HD, cylinder PP, 1 packing, 5 pcs/packing
17900035	5.00	100	200	300	400	500	± 0.4	≤ 0.3	5mL, piston PE-HD, cylinder PP, 1 packing, 5 pcs/packing
17900036	12.50	250	500	750	1000	1250	± 0.3	≤ 0.3	12.5ml, piston PE-HD, cylinder PP, 1 packing, 5 pcs/packing
17900037	25.00	500	1000	1500	2000	2500	± 0.2	≤ 0.3	25mL, piston PE-HD, cylinder PP, 1 packing, 2pcs/packing with 1 pc adapter
17900038	50.00	1000	2000	3000	4000	5000	± 0.2	≤ 0.2	50mL, piston PE-HD, cylinder PP, 1 packing, 2pcs/packing with 1 pc adapter

# Electronic Titrator

## dTrite Electronic Titrator

The dTrite Digital Burette provides accurate, precise and convenient bottle-top titration, as well as optimum operator safety.

It combines both magnetic stirrer and titrator functions, making it easier for the operator to achieve satisfactory results in the field of analytical chemistry, food industry, water analysis etc.



### Features

- High quality motor providing excellent precision and accuracy
- Electronic control decreases the repetitive strain injury
- Remote control panel prevents manual disturbance during operation
- Built-in magnetic stirrer support

### Specifications

Volume Range	0.01mL-99.99mL, Max piston lift is 10mL, resolution is 10 $\mu$ L
Volume Accuracy	R=0.2% CV=0.07%
Velocity	16 stages
Operating Temperature Range	10°C-30°C
Quality Control	DIN EN ISO 8655
Control Type	External control, including the stirrer and the burette program

# Electronic Bottle-Top Dispenser

## dFlow Electronic Bottle-Top Dispenser

### Features

- Motor operation minimizes the grip force
- Electronic control decreases the repetitive strain injury
- Remote control panel prevents manual disturbance during operation
- Two Dispensing modes, dispenser and stepper function options



### Specifications

Volume Range	0.1-99.9mL, Max piston lift is 10mL, resolution is 100 $\mu$ L
Volume Accuracy	Dispenser: R = 10mL $\pm$ 30 $\mu$ L; CV = 10ml $\pm$ 10 $\mu$ L Stepper: R = 1mL $\pm$ 6 $\mu$ L; CV = 1ML $\pm$ 9 $\mu$ L
Operating Temperature Range	10°C-30°C
Quality Control	DIN EN ISO 8655
Contro Type	External control

# Bottle-Top Dispensers

## DispensMate Bottle-Top Dispenser

Easy-to-use volume adjustment

Smooth piston design provides effortless dispensing

Adapters allow fitting to standard reagent bottles

Filling tube adjusts easily for different size bottles

Closure cap protects, against reagent contact and is easy to attach/detach, without taking gloves off.



### Features

- Excellent chemical resistance, components are made of PTFE, FEP, BSG, PP
- Fully autoclavable at 121°C
- Four ranges of bottle-top dispenser covering a volume range from 0.5mL to 50mL
- Easy for cleaning and maintenance
- The optional flexible discharge tube with safety handle permits fast and precise dispensing
- Vapor pressure max. 500mbar, viscosity max. 500mm<sup>2</sup>/s,
- temperature max. 40°C, density max. 2.2g/cm<sup>3</sup>
- Dispensmate is supplied with S40, GL32, GL38, GL25, GL28 sized adapters

### Specifications

Cat. No.	Volume Range mL	Graduation mL	A $\leq$ $\pm$		CV $\leq$	
			%	$\mu$ L	%	$\mu$ L
7032100001	0.5-5	0.1	0.5	25	0.2	10
7032100002	1.0-10	0.2	0.5	50	0.2	20
7032100003	2.5-25	0.5	0.5	125	0.2	50
7032100004	5.0-50	1.0	0.5	250	0.2	100

### Accessories

Cat. No.	Description
17100553	GL45, Adapter, 45mm
17000069	S40, Adapter, 45/40mm
17400131	GL32, Adapter, 45/32mm
17400132	GL38, Adapter, 45/38mm
17400133	GL25, Adapter, 32/25mm
17400134	GL28, Adapter, 32/28mm
17400037	Reagent Bottle (Brown, 1L, Optional)
17400021	Filling tube(m)
17100073	Discharge tube(m)



# Vacuum Aspiration System



SafeVac is designed for laboratory waste recovery and separation of liquid and solid. It can be widely used in cell culture, DNA extraction, microplate waste removal, and any other liquid separation or recovery.

## SAFEVAC Vacuum Aspiration Systems

### Features

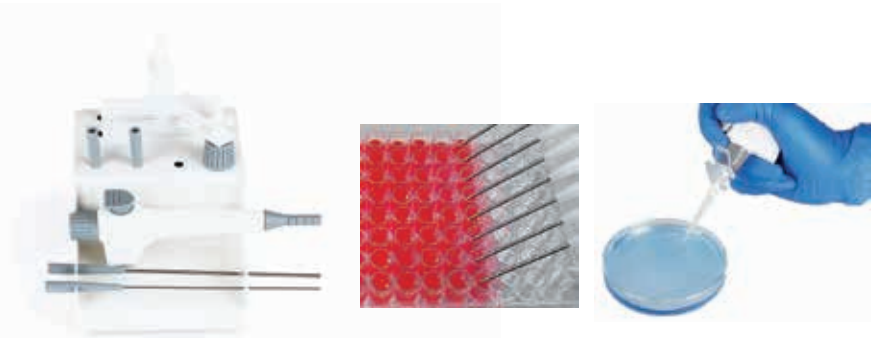
- Vacuum power can be set to different levels to achieve 1mL/S to 15mL/S aspiration speed
- Sensitive level sensor to prevent liquid overflow during operation
- Fully autoclavable waste collection bottle, tubing and handle
- Lid, tubing and handle are easy for disassembling, cleaning and autoclaving
- Wide range of adapters to fit tube, microplate and disk plate for various tasks
- Interchangeable hand operator -tip adapters make it suitable for various tasks from single channel to 8-channel based on the applications in tube, micro plate, disk plate etc

### Specifications

Vacuum range	0-600mbar
Aspirating speed	1-15mL/S
Autoclave component	tube; waste bottle; operation handle;
Dimension[WxDxH]	180x240x450mm
Weight	3kg
Input voltage	100-240VAC, 50/60 Hz
Bottle Volume	4L

Hydrophobic filter  
0.45µm  
Φ6mm

Wide range of adapters fit well with tube, microplate and disk plate for various of tasks, all of which can be fully autoclaved ( At 121°C 1 bar for 20 minutes. After autoclaving the equipment must be cooled down before use ).



# Thermal Control



## TC1000-G Thermal Cycler Gradient

## TC1000-S Thermal Cycler Standard

Thermal cyclers are essential laboratory instruments in the field of biotechnology, cloning, genotyping, mutagenesis, etc.

The TC1000-G features gradient function to achieve excellent heating and cooling rates and temperature uniformity in a single run, fulfilling every wish for easy optimization of PCR assays with high throughput.

### Features

- Reliable heating/cooling elements and precise temperature control
- Unique design of block ensures the temperature uniformity and repeatable results
- 7 inch Large color touch panel screen for easy programming with user friendly software
- High performance DSP and temperature control
- Fast heating and cooling rate
- Large user program storage



# Thermal Cyclers



Excellent temperature uniformity



Gradient function



LCD touch panel



Excellent temperature accuracy



## Specifications

	TC1000-G	TC1000-S
Sample Capacity	96X0.2mL PCR tube, 8X12 PCR plate or 96 well plate	96X0.2mL PCR tube, 8X12 PCR plate or 96 well plate
Heating Temperature Range	4-105°C	4-105°C
Lid Temperature Range	30-110°C	30-110°C
Temperature Display Accuracy	±0.1°C	±0.1°C
Temperature Control Accuracy [at 55°C]	±0.3°C	±0.3°C
Temperature uniformity[at 55°C]	<0.3°C	<0.3°C
Max. Heating/Cooling Rate	3°C/Sec	3°C/Sec
Gradient Temperature Setting Range	30-99°C	-
Gradient Range	1-42°C	-
Adapter block material	aluminum	aluminum
Display	7" LCD 800x480	7" LCD 800x480
Input	Touch panel	Touch panel
User defined file system	Max. 30 segments 99 cycles max. 16 folder and 16 files each folder	Max. 30 segments 99 cycle max. 16 folder and 16 files each folder
Power off protection	Yes	Yes
Power Supply	100-120V/200-240V,50/60Hz	100-120V/200-240V,50/60Hz
Dimension[WxDxH]	280x370x250 mm	280x370x250 mm
Weight	11kg	11kg



## HB120-S

### Dry bath

#### Features

- A wide range of temperature control up to 120°C
- Timer function support is available
- Various types of optional blocks are available
- Overheating protection
- Lid for protection and heat preservation



#### Specifications

	HB120-S
Functions	Heating
Temperature range	Room temp.-120°C
Temperature control accuracy [at 37°C]	± 0.5°C
Temperature uniformity	± 0.5°C
Max. heating rate	5.5°C/min
Timer	0min-99h59min
Screen	LED
Overheating protection	140°C
Adapter block material	aluminum
Voltage, Frequency	100-120V/220-240V,50Hz/60Hz
Power	160W
Dimension[WxDxH ]	175 x 290 x 85mm
Weight	3kg

Cat.No.	Block types	Capacity	Diameter Depth
18900218		0.2mLx54	6.4mm 15mm
18900219		0.5mLx40	8.2mm 26.4mm
18900253 (1.5mL) 18900220 (2mL)		1.5mLx40 2mLx40	11mm 34.7mm
18900221		5/15mLx28	17mm 48mm
18900222		50mLx8	29.8mm 48mm
18900224		0.2mL+0.5mL+1.5/2mL 18+18+18	-
18900223		96 or 384 well plate	-



Adapter block selection



Overheating protection



Timer



LED display





# Dry Bath



Mini Dry bath is portable, compact and convenient. It is useful for rapid and uniform heating of biological samples, in applications like preservation and denaturation of nucleic acids and proteins and many other applications.

## Mini HCL100 Mini HC100 Mini H100 Dry Bath

### Features:

- Light in weight
- LCD display of both temperature and time.
- Rapid calibration support
- Overheating protection
- Optional blocks with different capacities are available
- Safe and stable
- USB interface to save the data
- Mini HCL100 with hot lid provided to preserve the generated heat

Cat.NO.	Block types	Capacity	Diameter x depth
18900414		0.2mlx40	6.4x20 mm
18900415		0.5mlx24	8.2x28.4mm
18900416		1.5mLx15	11.2x31mm
18900428		2mlx15	11x31mm
18900417		5mLx6	17x31mm
18900426		15mlx4	16.4x45mm
18900427		50mlx2	29x45mm

### Specifications

	Mini HCL100	Mini HC100	Mini H100
Display	LCD	LCD	LCD
Temperature setting range[°C]	0-100	0-100	25-100
Temperature range [°C]	Room temperature-23~100	Room temperature-23~100	Room temperature+5~100
Temperature control accuracy[°C]	±0.5	±0.5	±0.5
Temperature display accuracy[°C]	0.1	0.1	0.1
Minimum time taken for heating(25°C-100°C)	≤20min	≤20min	≤20min
Minimum time for cooling (20°C-0°C)	≤25min	≤25min	/
Max. Heating Rate	8°C /min	8°C /min	6.5°C /min
Max. Cooling Rate	3°C /min	3°C /min	/
Time setting range	0-999min/0-999sec	0-999min/0-999sec	0-999min/0-999sec
No. of programs in memory	9(2steps for each)	9 (2steps for each)	9(2steps for each)
Rapid calibration	Support	Support	Support
USB interface	Support	Support	Support
Error code reminder	Support	Support	Support
External dimension [mm]	110x162x140	110x162x140	110x162x140
Overall weight [kg]	≤1	≤1	≤1
Power supply	DC12V,100-240V, 50/60Hz	DC12V,100-240V, 50/60Hz	DC12V,100-240V, 50/60Hz
Power[w]	60	60	60
Operating temperature[°C]	+10-40	+10-40	+10-40
Operating humidity [% RH]	≤80	≤80	≤80

## HC110-Pro Dry bath with cooling

### Features

- Precise temperature control for heating and cooling
- Flexible adapter selection
- Programmable
- Compatible with various tubes
- Quick interchange of blocks with magnet adhesion technology and without any tools
- Block equipped with a lid for heat preservation



Excellent temperature accuracy



Programmable



Adapter self recognition



Cat.No.	Blocks	Speed	Capacity	Diameter x Depth
18900401		1500rpm	24x0.5mL	8.1x26mm
18900402		1500rpm	24x1.5mL	10.9x30.8mm
18900403		1500rpm	24x2mL	10.9x30.8mm
18900404		1500rpm	8x5mL (round bottom)	13.6x42mm
18900405		1400rpm	8x5mL (cone bottom)	17x51.5mm
18900406		800rpm	8x15mL	16.9x80mm
18900407		600rpm	4x50mL	29.6x80mm
18900420		1500rpm	0.2mLx96 PCR plate	-
18900423		1500rpm	microplate	-

### Specifications

	HC110-Pro
Functions	Heating & cooling
Temperature range	Heating: room temp. - 110°C Cooling: room temp. - below room temp. 25°C
Temperature setting range specifications	-5~110°C
Temperature control accuracy[@20~45°C]	± 0.5°C
Temperature uniformity[@20~45°C]	Max ± 0.5°C
Max. heating rate	5.5°C/min
Max. cooling rate	2.5°C/min (100°C-room temp.) 0.5°C/min (below room temp.)
Screen	TFT
Program	9
Overheating protection	150°C
Adapter block material	aluminum
Voltage, Frequency	100~240V,50/60Hz
Power	200W
Dimension[WxDxH] (without the heating block)	200x235x120mm
Weight	7.3kg

# Thermo Mix

The Thermo Mix series allow for precise and efficient heating and mixing, as well as excellent temperature accuracy and uniformity, offering a wide range of applications, such as gene synthesis, gene purification, gene and protein denaturation, enzymatic reaction, bacterial growth, etc.

## HCM100-Pro

Thermo Mix

## HM100-Pro

Thermo Mix with heating



### Features

- Excellent mixing result
- Stable and wide range of speed adjustment
- Precise temperature control for heating and cooling
- Flexible adapter selection
- Programmable
- Compatible with various tubes
- Quick interchange of blocks with magnet adhesion technology and without any tools
- Block equipped with a lid for heat preservation



Blocks self recognition



### Specifications

	HCM100-Pro	HM100-Pro
Functions	Heating, cooling & mixing	Heating & mixing
Temperature range	Heating: room temp. - 100°C Cooling: room temp. - below room temp. 15°C	Heating: room temp. - 100 °C
Temperature setting range specifications	0.1~100°C	15~100°C
Temperature control accuracy[@ 20~45°C]	± 0.5°C	± 0.5°C
Temperature uniformity[@ 20~45°C]	Max. ± 0.5°C	Max. 0.5 °C
Max. heating rate	5.5°C/min	5.5°C/min
Max. cooling rate	5°C /min(100°C-room temp.) 0.5°C/min(below room temp.)	-
Mixing frequency	200-1500rpm	200-1500rpm
Mixing orbit	3mm	3mm
Screen	TFT	TFT
Program	9	9
Overheating protection	150°C	150°C
Adapter block material	aluminum	aluminum
Voltage, Frequency	100-240V,50/60Hz	100-240V,50/60Hz
Power	200W	200W
Dimension[WxDxH] ( without the heating block )	200x235x120mm	200x235x120mm
Weight	7.3kg	7.3kg

# Distilling



# Rotary Evaporator

## RE100-Pro Digital Rotary Evaporator

LCD Digital Rotary Evaporator is an essential instrument in chemical laboratories for the efficient and gentle removal of solvents from samples by evaporation. It offers an excellent distilling solution in a wide range of applications.



### Features:

- Digital display of both rotation speed and heating temperature allows for optimal control of all distillation processes
- Automatic motor lift releases the evaporating flask to a safe position in case of power failure
- 5L heating bath with wide temperature range from room temp. to 180°C, Water/oil heating mode can be changed only through a switch
- Overheating protection temperature at 220°C
- Speed range from 20 to 280rpm, and interval operation in clockwise and anticlockwise directions for drying process
- Patented condenser (cooling surface 1700cm<sup>2</sup>) with excellent cooling effect
- Ejection mechanism ensures easy removal of evaporating flask
- Patented double spring sealing ring which is made of PTFE provides an excellent sealing performance
- Remote function provides PC control and data transmission



Large LCD display



USB connector



Chemical resistance



Overheating protection



Compatible with all range of glassware

### Specifications

	RE100-Pro
Motor Type	Brushless DC motor
Speed Range	20-280rpm
Display	LCD(speed, temperature, time)
Clockwise and Anti-clockwise	Yes
Heating Temperature Range	Room temp. to 180°C
Control Accuracy	water: ±1°C oil: ±3°C
Heating Power	1300W
Stroke Displacement	automatic 150mm
Timer	Yes
Time Setting Range	1-999min
Dimension[D×W×H]	465×457×583mm
Weight	15kg
Permissible Ambient Temperature	5-40°C
Permissible Relative Humidity	80%RH
Protection Class	IP20
USB Interface	Yes
Voltage/Frequency	100-120/200-240V 50/60 Hz
Power	1400 W



DLAB LED Digital Rotary Evaporator is a basic chemical laboratory instrument suitable for evaporation, distillation and separation of chemicals. It can be used as a multifunctional system in combination with vacuum pump, vacuum controller and circulating refrigerators to provide excellent distillation solutions in many laboratory applications.

## Features:

- 5L heating bath with a wide temperature range (room temp. to 180°C), independent temperature control, make it can be used separately. Water/oil heating mode can be changed only through a switch
- Manual lift combined with auxiliary lift for precise positioning of the glassware
- PID control ensures high temperature accuracy at  $\pm 1^\circ\text{C}$  (water)
- Overheating protection temperature at 220°C
- Boil-dry protection, automatically power off if heating without water/oil in the heating bath
- Speed range from 20 to 200rpm, timing interval operation in clockwise and anticlockwise directions for drying process
- Patented condenser (cooling surface 1200/1700cm<sup>2</sup> for selection), double helix condensing tube + center circular arc design to speed up the flow rate of liquid with excellent cooling effect
- Ejection mechanism ensures easy exchange of evaporating flask
- Adjustable immersion angle
- Patented double spring sealing ring which is made of PTFE provides an excellent sealing performance
- Remote function provides PC control and data transmission
- Compatible with the entire range of RE100-Pro glassware



USB connector



Chemical resistance



Overheating protection



Compatible with all range of glassware

## RE100-S

### LED Digital Rotary Evaporator



## Specifications

	RE100-S
Motor Type	Brushless DC motor
Speed Range	20-200rpm
Display	LED (speed, temperature, time)
Clockwise and Anti-clockwise	Yes
Heating Temperature Range	Room temp. to 180°C
Control Accuracy	water: $\pm 1^\circ\text{C}$ oil: $\pm 3^\circ\text{C}$
Heating Power	1010 W
Stroke Displacement	Manual 110mm + auxiliary 100mm
Interval Time Setting Range	1~999s
Dimension [D×W×H]	Main Unit: 440×320×450mm Heating Bath: 300×300×240mm
Weight	Main Unit: 7kg Heating Bath: 3kg
Permissible Ambient Temperature	5~40°C
Permissible Relative Humidity	80%RH
Protection Class	IP20
USB Interface	Yes
Voltage/Frequency	100~120/200~240V 50/60 Hz
Power	1100 W

# Rotary Evaporator | Accessories

## Condenser



### Vertical

Cat. No.	Glassware type	Volume	Cooling surface
18900165	Evaporating flask(NS29/32) Receiving flask(KS35/20)	1000mL	1700cm <sup>2</sup>
18900173	Evaporating flask(NS24/40) Receiving flask(KS35/20)	1000mL	1700cm <sup>2</sup>
18900166	(COATED)Evaporatingflask(NS29/32) Receiving flask (KS35/20)	1000mL	1700cm <sup>2</sup>
18900174	(COATED)Evaporatingflask(NS24/40) Receiving flask (KS35/20)	1000mL	1700cm <sup>2</sup>
18202410	evaporating flask (NS 29/32) Receiving flask (KS 35/20)	1000mL	1200cm <sup>2</sup>

### Diagonal

Cat. No.	Glassware type	Volume	Cooling surface
18900163	Evaporating flask(NS29/32)Receiving flask(KS35/20)	1000mL	1700cm <sup>2</sup>
18900171	Evaporating flask(NS24/40)Receiving flask(KS35/20)	1000mL	1700cm <sup>2</sup>
18900164	(COATED)Evaporatingflask(NS29/32) Receiving flask (KS 35/20)	1000mL	1700cm <sup>2</sup>
18900172	(COATED)Evaporatingflask(NS24/40) Receiving flask (KS35/20)	1000mL	1700cm <sup>2</sup>

### Heating Bath

Cat. No.	Description	Volume
18900201	Rotary Evaporator, 220V	5L
18900202	Rotary Evaporator, 110V	5L
6033100210	LED heating bath, 100V-120/200-240V,50/60HZ	5L



## Glassware



### Evaporating flask

Cat. No.	Volume	Size
18300116	50mL	NS 29/32
18300117	100mL	NS 29/32
18300118	250mL	NS 29/32
18300119	500mL	NS 29/32
18300120	1000mL	NS 29/32
18300121	2000mL	NS 29/32
18300655	50mL	NS24/40
18300201	100mL	NS 24/40
18300202	250mL	NS 24/40
18300203	500mL	NS 24/40
18300204	1000mL	NS 24/40
18300205	2000mL	NS 24/40



### Receiving flask

Cat. No.	Volume	Size
18300107	100ml	KS 35/20
18300108	250ml	KS 35/20
18300109	500ml	KS 35/20
18300110	1000ml	KS 35/20
18300111	2000ml	KS 35/20



### Distilling spider with 5 flasks(without flask)

Cat. No.	Volume	Size
18900194	/	NS 29/32, NS24/29
18900177	/	NS 29/42, NS24/40



### Foam brake

Cat. No.	Volume	Size
18300093	250ml	NS 29/32
18300207	250ml	NS 24/40



### Vapor tube

Cat. No.	Volume	Size
18100998	/	NS 29/32
18300206	/	NS 24/40

### Connector

Cat. No.	Volume	Size
18300094	/	NS 29/32, NS24/29
18300095	/	NS 29/32, NS19/26
18300096	/	NS 29/32, NS14/23
18300199	/	NS24/40, NS19/22
18300200	/	NS 24/40, NS14/20
18900193	/	NS 24/40, NS 29/42

# Low Temperature Circulator

DLAB Low Temperature Circulator, lowers temperature in place of chilled tap water, is water-efficient and provides high cooling efficiency, capable of almost any cooling requirements in lab or industrial environments. With a compact structure and environment-friendly design, it is an ideal choice for labs.

## CCP5-15 Low Temperature Circulator

### Features & Advantages

- Temperature range: -15- room temperature
- Employs PID temperature control with built-in PT1000 temperature sensor that provides high accuracy of temperature control
- A crystal-clear LED display that switches between display of set temperature and that of actual temperature
- The entire unit is capable of protection against short circuit, over-current, overload and delayed start
- Integrated design of drain outlet and water outlet that allows easy drainage
- German-made pump that is environment-friendly, low-noise and durable
- The compressor employs state-of-the-art R290 environment-friendly refrigerant to protect environment and human health



- The part in contact with liquid is made of stainless steel or high-quality corrosion-resistant material;



- User-friendly operating panel configuration that allows easy operation;



- A large-volume open reservoir allows easy filling and supports cold trap experiment;



- The caster design allows the entire unit to move easily.



# Low Temperature Circulator



## Specifications

### CCP5-15

Range of temperature control	-15°C-Room temperature
Temperature adjustment accuracy	0.1°C
Temperature control accuracy	±0.5°C
Reservoir capacity	5L
Range of temperature adjustment	-30°C~30°C
Temperature display	LED
Type of temperature sensor	PT1000
Compressor refrigerant	R290
Circulating pump throughput	12L/min
Circulating pump head	6m
In-out cycle interface	12mm pagoda-type interface
RS232 interface	Yes
Machine power	350W
Maximum overall dimensions	370*460*700 (mm)
Weight	46Kg
Power supply	220V 50Hz/60Hz
Operating environment	10°C~40°C ≤80% RH

	Cooling capacity					
°C	-15	-10	-5	0	5	10
W	381	460	553	661	786	900



# Vacuum Controller

The vacuum controller serves as a device for labs to display, adjust and control the degree of vacuum in vacuum systems. It generally constitutes the vacuum control system of rotary evaporator along with vacuum pump, which enables repeatable distillation experiment and recovery of many kinds of solvents in an efficient and automatic manner.



## VC100 Vacuum Controller

### Features

- A wide range of measurement and control, 1-1,000mbar
- Two control modes of single-point control and programmed control available for choice as needed
- Can store up to 5 programs, each containing up to 5 segments of programming control
- A large-size TFT touch screen display control allows easy operation
- All parts in contact with vapor or liquid are made of PTFE, ceramics or other high-performance materials and can effectively resist corrosion caused by organic solvents, water, acid and alkali
- A built-in vent valve can feed inert gas into system equipment
- One-stroke decompression allows easy installation and dismantling of vacuum system
- Can be connected with pump power control for temporary shutdown of pump power supply after reaching stable degree of vacuum for energy conservation and environmental protection. Can also be operated in the normally open statue of pump



### Specifications

	VC100
Vacuum setting range	1-1000mbar
Vacuum measurement range	1-1000mbar
Control operation mode	Single-point control mode, Programmed control mode
Control program	Can store up to 5 programs, each containing 5-step control (capable to set the degree of vacuum and time)
Setting method	Touch screen setting
Display	5" TFT
Sensor overload pressure	1,500mbar
Connector diameter	8mm
Materials in contact with vapor	PTFE, PP, silicone and ceramics
Power	600W
Compatible conditions with vacuum pump	power of 50Hz vacuum pump ≤400W power of 60Hz vacuum pump ≤500W
Overall dimensionsW×D×H	189×207×193mm
Weight	4.0kg
Power supply	110—240V,50Hz/60Hz
Operating environment	10°C~40°C, ≤80%RH

## Additional

### MZ 1C Chemistry-design diaphragm pump

#### Specification

Number of heads / stages: 2 / 2  
 Max. pumping speed: 0.75 m<sup>3</sup>/h  
 Ultimate vacuum (abs.): 12mbar  
 Nozzle Size: DN 8-10 mm  
 Rated motor power: 0.06kW  
 Rated motor speed: 1500/1800 rpm  
 Noise level: 45dB  
 ATEX: II 3G IIC T3 X Internal Atm. only

#### Cat. No.

#### Voltage

Cat. No.	Voltage
18900231	Cn plug, 100V-120V/200-230V 50Hz/60Hz
18900232	Euro plug, 100V-120V/200-230V 50Hz/60Hz
18900233	USA plug, 100V-120V/200-230V 50Hz/60Hz
18900234	UK plug, 100V-120V/200-230V 50Hz/60Hz



### C410 Chemistry-design diaphragm pump

#### Specification

Maximum Vacuum: 13mbar  
 Work Mode: Continuous Operation  
 Nozzle Size: 8mm, Power: 95W  
 Motor speed: 1450rpm  
 Flow Rate:

mbar	1000	880	750	600	480	280
L/min	25	22	20	12	7.5	5



### Vacuum regulator/moisture trap

#### Cat. No.

#### Description

18900186  
 In use of control small volume, installed in a vacuum between DVR480 and vacuum system.  
 Material: PVDF, PTFE, ABS, Borosilicate Glass, Stainless Steel



### Seals and other accessories

#### Cat. No.

#### Description

18202027	PTFE vacuum seal	
18900362	Ultra resistant FFKM seal for applications with highly abrasive solutions	
18900190	Evaporation flask clip (red) CS002440	
18900188	Evaporation flask clip (green) CS002942	

# Mixing & Heating



# Magnetic Hotplate Stirrers

DLAB 550°C series magnetic stirrer is developed for demanding applications. It is widely used in chemical synthesis, physical and chemical analysis, bio-pharmaceuticals etc. Combining with glass ceramic work plate, brushless DC motor and external temperature sensor, the work plate temperature is optimized up to 550°C.

## MS7-H550-Pro LCD Digital Magnetic Hotplate Stirrer

### Features

- LCD display for precise monitoring of speed and temperature
- Built-in PID controller ensures safe heating of the medium with overheating protection
- Max. heating plate temperature 550°C
- Glass ceramic work plate provides excellent chemical resistant performance and most efficient heat transfer
- External temperature control is possible by connecting the temperature sensor(PT1000) with an accuracy at  $\pm 0.2^{\circ}\text{C}$
- Digital speed controlling, max. speed at 1500rpm
- Outstanding brushless DC motor enables more stirring power
- Two rotating knobs enable easy adjustment of speed and temperature
- The "HOT" warning will flash when the work plate temperature is above 50°C even when the hotplate is turned off
- Remote function provides PC control and data transmission



## MS7-H550-S LED Magnetic Hotplate Stirrer

### Features

- LED display for precise monitoring of temperature
- A wide speed range of 0 to 1500rpm
- Max. Heating plate temperature 550°C
- External temperature control is possible by connecting the temperature sensor(PT1000) with accuracy at  $\pm 0.2^{\circ}\text{C}$
- The "HOT" warning will flash if the work plate temperature is above 50°C





Overheating protection



External sensor



Wide range of accessories



Chemical resistance



### Specifications

	MS7-H550-Pro	MS7-H550-S
Work plate Dimension [W x D]	184x184mm (7 inch)	184x184mm (7 inch)
Work plate material	Glass ceramic	Glass ceramic
Motor type	Brushless DC motor	Shaded pole motor
Motor rating input	18W	15W
Motor rating output	10W	1.5W
Power	1050W	1030W
Heating output	1000W	1000W
Voltage	100-120/200-240V 50/60Hz	100-120/200-240V 50/60Hz
Stirring positions	1	1
Max. stirring quantity, [H <sub>2</sub> O]	20L	10L
Max. magnetic bar[length]	80mm	80mm
Speed range	100-1500rpm resolution ±1rpm	0-1500rpm
Speed display	LCD	Scale
Temperature display	LCD	LED
Heating temperature range	Room Temp.-550°C, increment 1°C	Room temp.-550°C, increment 5°C
Temperature control accuracy	±1°C(<100°C) ±1%(>100°C)	±10°C
Overheating protection	580°C	580°C
Temperature display accuracy	±0.1°C	±1°C
External temperature sensor	PT1000 (accuracy ±0.2)	PT1000 (accuracy ±0.2)
"Hot" warning	50°C	50°C
Data connector	RS232	-
Protection class	IP21	IP21
Dimension [WxDxH]	215x360x112mm	215x360x112mm
Weight	5.3kg	4.5kg
Permissible ambient temperature and humidity	5-40°C, 80%RH	5-40°C, 80%RH



## Magnetic Hotplate Stirrers

D LAB 340°C magnetic hotplate stirrers include all leading safety standards and features for superior ease of use and are cost-effective. They are widely used in chemical synthesis, physical and chemical analysis, bio-pharmaceuticals, etc.

### **MS-H-Pro<sup>T</sup>** LCD Digital Magnetic Hotplate Stirrer with Timer



### **MS-H-Pro<sup>+</sup>** LCD Digital Magnetic Hotplate Stirrer



#### Features

- Brushless DC motor is maintenance free and explosion-proof
- Digital temperature control with max. temperature at 340°C
- Digital speed control with max. speed up to 1500rpm
- Max. stirring quantity of H<sub>2</sub>O at 20L
- Safety circuits provide overheating protection
- The "HOT" warning will flash if the plate temperature is above 50°C even when the hotplate is turned off
- Wide range timer function from 1min to 99h59min(MS-H-Pro<sup>T</sup> only)
- High-resolution LCD display shows actual temperatures and speed (MS-H-Pro<sup>T</sup> displays the time also)
- External temperature control is possible by connecting the temperature sensor(PT 1000) with accuracy at  $\pm 0.2^{\circ}\text{C}$
- Stainless steel work plate with ceramic coating provides good chemical-resistant performance
- Remote function provides PC control and data transmission
- A wide variety of accessories are available

# Magnetic Hotplate Stirrers



## MS-H-S Magnetic Hotplate Stirrer

### Features

- Maintenance free brushless DC motor
- Max. temperature to 340°C
- Stirring speed up to 1500 rpm
- Stainless steel work plate with ceramic coating provides good chemical-resistant performance
- Safety circuits provide overheating protection
- A wide variety of accessories are available



External sensor



Brushless DC motor



Wide range of accessories



RS232 connector



Chemical resistance





## Specifications

	MS-H-PRO <sup>+</sup>	MS-H-PRO <sup>T</sup>	MS-H-S
Work plate dimension	φ135mm(5 inch)	φ135mm(5 inch)	φ135mm(5 inch)
Work plate material	stainless steel cover with ceramic	stainless steel cover with ceramic	stainless steel cover with ceramic
Motor type	Brushless DC motor	Brushless DC motor	Brushless DC motor
Motor rating input	18W	18W	18W
Motor rating output	10W	10W	10W
Power	550W	550W	530W
Heating output	500W	500W	500W
Voltage	100-120/200-240V 50/60Hz	100-120/200-240V 50/60Hz	100-120/200-240V 50/60Hz
Stirring positions	1	1	1
Max. stirring quantity[H <sub>2</sub> O]	20L	20L	20L
Max. magnetic bar[length]	80mm	80mm	80mm
Speed range	100-1500rpm resolution±1rpm	100-1500rpm resolution±1rpm	0-1500rpm resolution±1rpm
Speed display	LCD	LCD	Scale
Temperature display	LCD	LCD	Scale
Heating temperature range	Room temp.-340°C, increment 1°C	Room temp.-340°C, increment 1°C	Room temp.-340°C
Temperature control accuracy	±1°C(<100°C) ±1%(>100°C)	±1°C(<100°C) ±1%(>100°C)	-
Over temperature protection	420°C	420°C	420°C
Temperature display accuracy	±0.1°C	±0.1°C	±0.5°C
External temperature sensor	PT1000 (accuracy ±0.2)	PT1000 (accuracy ±0.2)	-
"Hot" warning	50°C	50°C	-
Timer function	-	1min to 99h 59min	-
Data connector	RS232	RS232	-
Protection class	IP42	IP42	IP42
Dimension[WxDxH]	160×280×85mm	160×280×85mm	160×280×85mm
Weight	2.8kg	2.8kg	2.8kg
Permissible ambient temperature and humidity	5-40°C, 80%RH	5-40°C, 80%RH	5-40°C, 80%RH

# Magnetic Hotplate Stirrers

DLAB MS-H280-Pro is a perfect device for handling small volume task on daily application, as a low temperature magnetic stirrer with max. temperature at 280°C.

## MS-H280-Pro LED Digital Magnetic Hotplate Stirrer

### Features

- Digital temperature control with max. temperature up to 280°C
- Digital speed control with max. speed up to 1500rpm
- Stainless steel work plate with ceramic coating provides good chemical resistant performance
- External temperature control is possible by connecting the temperature sensor(PT1000) with an accuracy at  $\pm 0.5^{\circ}\text{C}$
- LED display shows temperature and speed
- The "HOT" warning will flash when the work plate temperature is above 50°C even if the hotplate is turned off



External sensor



Wide range of accessories



Chemical resistance



LED display



### Specifications

	MS-H280-Pro
Work plate Dimension	$\phi 135\text{mm}$ (5 inch)
Work plate material	stainless steel cover with ceramic
Motor type	Brushless DC motor
Motor rating input	5W
Motor rating output	3W
Power	515W
Heating output	500W
Voltage	100-120/200-240V 50/60Hz
Stirring positions	1
Max. stirring quantity	3L
Max. magnetic bar[length]	50mm
Speed range	200-1500rpm
Speed display	LED
Temperature display	LED
Speed display resolution	$\pm 1\text{rpm}$
Heating temperature range	Room temp.-280, increment $1^{\circ}\text{C}$
Control accuracy of work plate	$\pm 1^{\circ}\text{C}$ ( $<100^{\circ}\text{C}$ ) $\pm 1\%$ ( $>100^{\circ}\text{C}$ )
Overheating protection	$320^{\circ}\text{C}$
Temperature display accuracy	$\pm 1^{\circ}\text{C}$
External temperature sensor	PT1000 (accuracy $\pm 0.5^{\circ}\text{C}$ )
"Hot" warning	$50^{\circ}\text{C}$
Protection class	IP21
Dimension[WxDxH]	150×260×100mm
Weight	1.8kg
Permissible ambient temperature and humidity	5-40°C, 80%RH

# Magnetic Hotplate Stirrers

DLAB new heating magnetic stirrer with aluminum work plate, is capable of rapid heating and stable heating as well as precise temperature control. Almost all leading safety standards and features are included for superior and are cost-effective. They are widely used in chemical synthesis, physical and chemical analysis, bio-pharmaceuticals, etc.

## MS-H-Pro<sup>A</sup> LCD Digital Magnetic Hotplate Stirrer

### Features

- Digital control with max. temperature at 340°C, max. speed up to 1500rpm.
- Aluminum alloy work plate with flat plane provides fast heating performance, and strong compatibility with various heating containers and heating blocks.
- High-resolution LCD display shows actual temperatures and speed.
- PID controller ensures a precise and steady heating process.
- External temperature control is possible by connecting the temperature sensor(PT 1000) with accuracy at  $\pm 0.2^{\circ}\text{C}$ .
- Brushless DC motor enables more powerful speed control.
- Three heating modes for selected ( fast heating, standard heating and stable heating ).
- Remote control function through RS232 interface provides PC control and data transmission.



### Security

- International safety certification: obtained the CE, CTÜVus, FCC and other product safety certifications issued by TUV Rheinland.
- Safety circuits provide overheating protection.
- The “HOT” warning will flash if the plate temperature is above 50°C even when the hotplate is turned off.
- Brushless DC motor is maintenance free and explosion-proof.
- Fully enclosed aluminum alloy housing with good heat dissipation performance and reliable protection capability.



### Specifications

	MS-H-Pro <sup>A</sup>
Work plate dimension	φ135mm(5inch)
Work plate material	Aluminum
Motor type	Brushless DC motor
Heating temperature range	Room temp.-340°C, increment 1°C
Temperature display accuracy	$\pm 0.1^{\circ}\text{C}$
Heating power	600w
Speed range	100-1500rpm resolution $\pm 1\text{rpm}$
Max. stirring quantity[H <sub>2</sub> O]	20L
Speed display	LCD
Temperature display	LCD
Motor rating input	18w
Motor rating output	10w
Max. magnetic bar[length]	80mm
Temperature control accuracy	$\pm 1^{\circ}\text{C}(<100^{\circ}\text{C})$ $\pm 1\%(>100^{\circ}\text{C})$
External temperature sensor	PT1000 (accuracy $\pm 0.2^{\circ}\text{C}$ )
Over temperature protection	420°C
"Hot" warning	50°C
Data connector	RS232
Protection class	IP21
Voltage	100~120/200-240V 50/60Hz
Power	650w
Dimension[WxDxH]	280×160×100mm
Weight	2.8kg
Permissible ambient temperature and humidity	5-40°C; 80%RH



# Magnetic Hotplate Stirrers

## HP380-Pro

LCD Digital Hotplate

## MS6-Pro

LCD Digital Magnetic Stirrer

## MS-H380-Pro

LCD Digital Magnetic Hotplate Stirrer

DLAB 380°C magnetic hotplate stirrers include all leading safety standards and is chemically-resistant with white ceramic work plate. They can be used in physical, chemical, analytical and biological laboratories.

### Features:

- Max. heating temperature is 380°C
- High resolution LCD displays actual temperature and speed.
- Brushless DC motor is maintenance free
- Aluminum cover with ceramic work plate, allows for immediate heat transfer
- External temperature control is possible with temperature sensor PT1000
- Digital temperature control with max. temperature at 380°C
- Digital speed control with max. speed up to 1500rpm
- Max. stirring quantity of H<sub>2</sub>O at 5L



Specifications	MS-H380 Pro	MS6-Pro	HP380-Pro
Work plate Dimension	140x140mm	140x140mm	140x140mm
Work plate material	Aluminum cover with ceramic coating	Aluminum cover with ceramic coating	Aluminum cover with ceramic coating
Motor type	Brushless DC motor	Brushless DC motor	-
Motor rating input	2.4W	2.4W	-
Motor rating output	1.8W	1.8W	-
Power	510W	10W	510W
Heating output	500W	-	500W
Voltage	100-120/200-240V, 50/60Hz	100-240V, 50-60Hz	100-120/200-240V, 50/60Hz
Stirring positions	1	1	-
Max. stirring quantity[H <sub>2</sub> O]	5L	5L	-
Max. magnetic bar[length]	50mm	40mm	-
Speed range	200-1500rpm	200-1500rpm	-
Speed display	LCD	LCD	-
Temperature display	LCD	-	LCD
Heating temperature range	Room temp.+5°C - 380°C	-	Room temp.+5°C - 380°C
Over heat Protection	420°C	-	420°C
Temperature display accuracy	±0.1°C	-	±0.1°C
External temperature sensor	PT1000 (accuracy ±0.5°C)	-	PT1000 (accuracy ±0.5°C)
Control accuracy of sensor	±20rpm	±20rpm	-
Protection class	IP21	IP21	IP21
Dimension [W x D x H]	320x180x108mm	320x180x108mm	320x180x108mm
Weight	2.2kg	2.2kg	2.2kg
Permissible ambient temperature and humidity	5-40°C 80%RH	5-40°C 80%RH	5-40°C 80%RH

## MS-H340-S4

### LCD 4-Channel Digital Magnetic Hotplate Stirrer



It is widely used in chemical synthesis, physical and chemical analysis, bio-pharmaceuticals etc.

#### Features

- Independent heating and stirring control
- LCD display shows actual temperatures and speed
- PID controller ensures a precise and steady heating process, Max. temperature up to 340°C
- Brushless DC motor enables more powerful speed control
- External temperature sensor(PT1000) with accuracy at 0.2°C
- Overheating protection temperature at 420°C
- Stainless steel work plate with ceramic coating provides good chemical-resistant performance
- A wide variety of accessories are available

#### Specifications

	MS-H340-S4
Work plate dimension	Φ135mm (5inch)
Plate material	Stainless steel with ceramic coating
Motor type	Brushless DC motor
Motor rating input	1.8W×4
Power	515W×4
Heating Power	500W×4
Voltage	100-120V,60Hz; 200-240V,50 Hz
Stirring positions	4
Max. stirring quantity of single position (H2O)	10L
Max. magnetic bar	40mm
Speed range	200-1500rpm
Speed display	LCD
Temperature display	LCD
Control accuracy of sensor	±20rpm
Temperature range	25-340°C
Over temperature protection	420°C
Temperature display accuracy	±0.1°C
External temp. sensor	PT1000 (Accuracy±0.2°C)
IP Protection class	IP21
Dimensions[WxDxH]	698×270×128mm
Weight	9.5kg
Permissible ambient temperature	5~40°C
Permissible relative humidity	80%RH

# Magnetic Hotplate Stirrers

## MS-H-S10

### 10-Position Magnetic Hotplate Stirrer

#### Features

- Maintenance-free brushless DC motor
- Max speed 1100rpm
- Max. temperature 120°C
- Stainless steel work plate, covered with silicone cushion, provides the excellent performance of heating uniformity and skid resistance



Skid resistance



Multiple position



Brushless DC motor

#### Specifications



	MS-H-S10
Work plate dimension[W x D]	180x450mm
Work plate material	Stainless steel with silicone
Motor type	Brushless DC motor
Motor rating input	12W
Motor rating output	4W
Power	490W
Heating output	470W
Voltage	100-120/200-240V 50/60Hz
Stirring positions	10
Max. stirring quantity	0.4Lx10
Max. magnetic bar[length]	40mm
Speed range	0-1100rpm
Speed display	scale
Temperature display	scale
Heating temperature range	Room temp.-120°C
Overheating protection	140°C
Protection class	IP42
Dimension[WxDxH]	182x622x65mm
Weight	3.2kg
Permissible ambient temperature and humidity	5-40°C, 80%RH

## Alloy-Bead Heating Bath

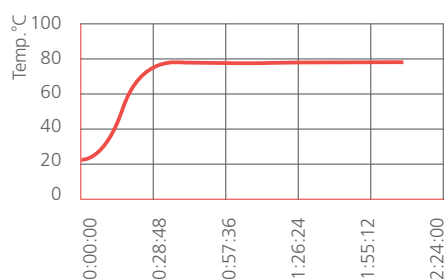
### Features

- High strength aluminum alloy bead with high thermal conductivity over wide temperature range.
- Flexible, convenient, easy to operate and adaptable to reaction vessels with different shapes and sizes.
- Accommodate the external temperature probe on the hotplate magnetic stirrer to achieve precise temperature control.
- The alloy bead does not adhere to the container inside surface, while the silicone oil is difficult to clean in the oil bath application.
- Eco-friendly, pollution free, poison free, fume free, highly safe and splash free heating.
- PTFE shell can effectively retain the heat and ensure human safety from burning injuries.
- The beads are easy to handle with. The contaminated portion can be cleaned and replaced separately.



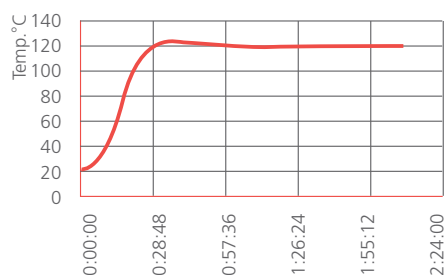
250ml water heated up to 80°C

(MS-H-ProA)



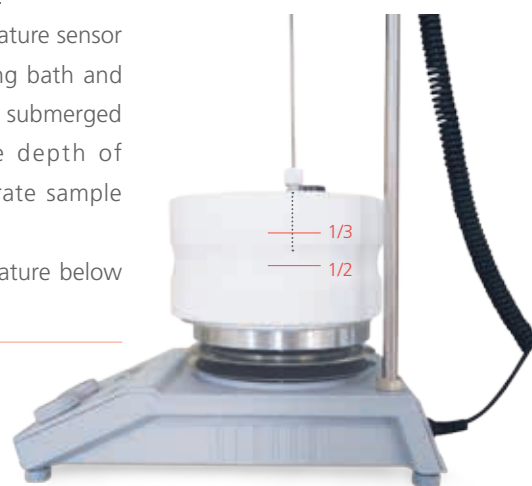
250ml silicone oil heated up to 120°C

(MS-H-ProA)



### Tips for temperature control

- We recommend to use the beads with DLAB 340, 550 and 280 series hotplate magnetic stirrers.
- Place the external temperature sensor in the hole on the heating bath and ensure that the probe is submerged within 1/2~1/3 of the depth of the bead bath for accurate sample temperature control.
- Keep the heating temperature below 260°C.



# Magnetic Hotplate Stirrers | Accessories



Cat. No.	Description	MS7-H550-Pro	MS7-H550-S	MS-H-Pro <sup>+</sup>	MS-H-Pro <sup>T</sup>	MS-H-S	MS-H280-Pro
1	Blue carrying plate, use with color quarter pies			■	■	■	■
2	Blue Fixed ring, use with color quarter pies			■	■	■	■
3	Red quarter pie, 11 holes, 4 mL reaction vessel, Ø15.2mm, 20mm depth	■	■	■	■	■	■
4	Purple quarter pie, 4 holes, 20 mL reaction vessel, Ø28mm, 24mm depth	■	■	■	■	■	■
5	Blue quarter pie, 4 holes, 30mL reaction vessel, Ø28mm, 30mm depth	■	■	■	■	■	■
6	Black quarter pie, 4 holes, 40mL reaction vessel, Ø28mm, 43mm depth	■	■	■	■	■	■
7	Green quarter pie, 6 holes, 8mL reaction vessel, Ø17.8mm, 26mm depth	■	■	■	■	■	■
8	Golden quarter pie, 4 holes, 16mL reaction vessel, Ø21.6mm, 31.7mm depth	■	■	■	■	■	■
9	Reaction block for 50mL round bottom flask (one flask capacity)			■	■	■	■
10	Reaction block for 100mL round bottom flask (one flask capacity)			■	■	■	■
11	Reaction block for 250mL round bottom flask (one flask capacity)			■	■	■	■
12	Reaction block for 500mL round bottom flask (one flask capacity)			■	■	■	■
13	F101 protective cover, temperature resistance of 135°C			■	■	■	■
14	PT1000-A, length of 230mm	■	■	■	■		■
15	PT1000-B, temperature sensor with glass coated, length of 230mm	■	■	■	■		■
16	Support clamp of PT1000	■	■	■	■		
17	Support clamp of PT1000						■



# Magnetic Hotplate Stirrers | Accessories



## Stirrer bars

Stirrer bars and stirrer bar remover(PTFE), use below 150°C

### Models

MS7-H550-Pro MS7-H550-S MS-H-Pro <sup>+</sup> MS-H-Pro <sup>T</sup> MS-H-S MS-S	MS-H280-Pro MS-PA MS-PB	MS-H-S10 MS-M-S10 FlatSpin EcoStir
--	-------------------------------	---

Cat. No.	Size of stirrer bars (LxØ)[mm]	Suitable for max. stirrer bar 80mm	Suitable for max. stirrer bar 50mm	Suitable for max. stirrer bar 40mm
18900006	10mmx6mm	■	■	■
18900007	15mmx8mm	■	■	■
18900008	20mmx8mm	■	■	■
18900009	25mmx8mm	■	■	■
12500005	30mmx6mm	■	■	■
18900011	40mmx8mm	■	■	■
12500004	50mmx8mm	■	■	
18900013	65mmx8mm	■		
18900014	80mmx13mm	■		
18900015	Stirrer bar remover, length of 200mm	■	■	■

# Hotplates

## HP550-S LED Hotplate

### Features

- LED screen shows temperature
- Max. temperature up to 550°C
- Separate safety circuits with fixed safety temperature of 580°C
- External temperature control is possible by connecting the temperature sensor(PT 1000) with an accuracy at  $\pm 0.5^\circ\text{C}$
- Glass ceramic work plate provides excellent chemical-resistant performance and most efficient heat transfer
- The "HOT" warning will flash if the work plate temperature is above 50°C even when the hotplate is turned off



Wide range of accessories



Chemical resistance



Overheating protection



"HOT" warning prevents burning



### Specifications

	HP550-S
Work plate dimension[WxD]	184x184mm(7 inch)
Work plate material	Glass ceramic
Power	1010W
Voltage Frequency	100-120/200-240V,50/60Hz
Heating Power	1000W
Heating position	1
Heating temperature range	Room temp.-550°C,increment 5°C
Control accuracy of work plate	$\pm 10^\circ\text{C}$
Safety temperature	580°C
Temperature display	LED
Temperature display accuracy	$\pm 1^\circ\text{C}$
External temperature sensor	PT1000( $\pm 0.5^\circ\text{C}$ )
Heating warning	50°C
Protection class	IP21
Dimension[WxDxH]	215x360x112mm
Weight	4.5kg
Permissible ambient temperature and humidity	5-40°C, 80%RH

## MS7-S 7" Square Magnetic Stirrer

### Features

- Speed range of 0-1500rpm
- Max. stirring quantity of H<sub>2</sub>O at 10L
- Ceramic work plate provides excellent chemical resistant performance



Chemical resistance



Strong magnetism

### Specifications

Work plate dimension[WxD]	
Work plate material	
Motor type	
Motor input power	
Motor output power	
Power	
Voltage	
Stirring positions	
Max. stirring quantity[H <sub>2</sub> O]	
Max. magnetic bar[length]	
Speed range	
Speed display	
Protection class	
Dimension[WxDxH]	
Weight	
Permissible ambient temperature and humidity	

## MS-S Magnetic Stirrer

### Features

- Maintenance free brushless DC motor
- Speed range of 0-1500 rpm
- Max. stirring quantity of H<sub>2</sub>O at 20L
- Stainless steel work plate cover with ceramic material provides good chemical resistance performance



### F100 protective cover

for non-hotplate model,  
use with MS-S



	MS7-S	MS-S
Work plate dimension[WxD]	184x184mm(7 inch)	φ135mm(5 inch)
Work plate material	Glass ceramic	Stainless steel cover with ceramic
Motor type	Shaded pole motor	Brushless DC motor
Motor input power	15W	18W
Motor output power	1.5W	10W
Power	30W	30W
Voltage	100-120/200-240V,50/60Hz	100-240V,50/60Hz
Stirring positions	1	1
Max. stirring quantity[H <sub>2</sub> O]	10L	20L
Max. magnetic bar[length]	80mm	80mm
Speed range	0-1500rpm	0-1500rpm
Speed display	Scale	Scale
Protection class	IP21	IP42
Dimension[WxDxH]	215x360x112mm	160x280x85mm
Weight	3.8kg	2.8kg
Permissible ambient temperature and humidity	5-40°C, 80%RH	5-40°C, 80%RH

# Magnetic Stirrers



## MS-PA LED Digital Magnetic Stirrer

### Features

- Digital speed control within the range of 100-1500rpm
- Max. stirring quantity of H<sub>2</sub>O at 3L
- LED display shows speed
- Nylon+GF housing provides a good performance of chemical resistance

## MS-PB Magnetic Stirrer

### Features

- A wide range of 0-1500rpm
- Max. stirring quantity of H<sub>2</sub>O at 3L
- Nylon+GF housing provides a good performance of chemical resistance



Chemical resistance



Strong magnetism



LED display



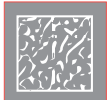
### Specifications

	MS-PA	MS-PB
Work plate dimension[WXD]	φ135mm(5 inch)	φ135mm(5 inch)
Work plate material	Nylon+GF	Nylon+GF
Motor type	Brushless DC motor	DC motor
Motor input power	5W	5W
Motor output power	3W	3W
Power	15W	10W
Voltage	100-120/200-240V,50/60Hz	100-120/200-240V,50/60Hz
Stirring positions	1	1
Max. stirring quantity[H <sub>2</sub> O]	3L	3L
Max. magnetic bar[length]	50mm	50mm
Speed range	200-1500rpm	0-1500rpm
Speed display	LED	Scale
Protection class	IP42	IP42
Dimension[WxDxH]	150×260×80mm	150×260×80 mm
Weight	1.8kg	1.8kg
Permissible ambient temperature and humidity	5-40°C, 80%RH	5-40°C, 80%RH

## MS-M-S10 10-Position Magnetic Stirrer

### Features

- Maintenance-free brushless DC motor
- Speed range of 0-1100rpm
- Stainless steel work plate covered with silicone cushion, provides excellent performance of skid resistance



Skid resistance



Multiple position



### Specifications

Work plate Dimension[WxD]	
Work plate material	
Motor type	
Motor input power	
Motor output power	
Power	
Voltage	
Stirring positions	
Max. stirring quantity[H <sub>2</sub> O]	
Max. magnetic bar[length]	
Speed range	
Speed display	
Protection class	
Dimension[WxDxH]	
Weight	
Permissible ambient temperature and humidity	

### MS-M-S10

180×450mm
Stainless steel with silicone coating
Brushless DC motor
12W
4W
20W
100-120/200-240V,50/60Hz
10
0.4LX10
40mm
0-1100rpm
Scale
IP21
622×205×65mm
3.2kg
5-40°C, 80%RH



# Magnetic Stirrers

## FlatSpin

### Ultra-flat Compact Magnetic Stirrer

With excellent stirring functionality, the compact shape of FlatSpin takes less bench space and makes storage easier.

#### Features

- A wide range of speed from 15 to 1500rpm
- Automatic reverse rotation for excellent mixing
- Protection class (IP65)
- PET top provides excellent chemical resistance
- Ultra silence and vibration-free



EcoStir is a magnetic stirrer customized for liquid mixing, suitable for chemical analysis, biology reagent mixing, regular laboratory experiments and liquid handling.

## EcoStir

### Economical Magnetic Stirrer

#### Features

- Maintenance free brushless DC motor
- Rare earth magnets give powerful stirring
- Stepless speed regulation 300-2000rpm
- Ultra silence and vibration-free design.
- PET top provides excellent chemical resistance
- Shaft can be fitted with a PH sensor or sensors for other purposes

#### Specifications

	FlatSpin	EcoStir
Work plate Dimension	φ90mm	φ120mm
Work plate material	PET	PET
Motor type	Motorless	Brushless DC motor
Motor output power	3W	1.2W
Power	5W	7.2W
Voltage	100-120/200-240V,50/60Hz	100-120/200-240V,50/60Hz
Stirring positions	1	1
Max. stirring quantity[H <sub>2</sub> O]	0.8L	1.5L
Max. magnetic bar[length]	40mm	40mm
Speed range	15-1500rpm	300-2000rpm
Speed setting	button	scale
Protection class	IP65	IP21
Dimension [W x D x H]	175x120x15mm	150x145x50mm
Weight	0.3kg	0.3kg
Permissible ambient temperature and humidity	5-40°C,80%RH	5-40°C,80%RH

## OS20-Pro OS40-Pro OS70-Pro

### LCD Digital Overhead Stirrer

DLAB Overhead Stirrers can accomplish the most demanding tasks and provide high safety and increased performance. They are widely used in chemical synthesis, pharmaceutical synthesis, physical and chemical analysis, petrochemical industries, etc.



Speed 50~2200rpm with control accuracy of  $\pm 3$ rpm



Brushless DC motor for long life, maintenance free



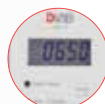
Provides a constant speed even with changes in viscosities of the sample



Safety circuits allow for safe stop function in anti-spill or overload conditions



Remote function provide PC control and data transmission



LCD display set and actual speed, Torque trend display for real-time information on viscosity changes



Self - locking drill chuck, tools free.



Stirring paddle "top-cross" design, easy to replace the container



Start/run smoothly, prevent sample splatter or overflow



Multi - purpose, multi - specification high quality stainless steel, PTFE stirring paddle optional



### Specifications

	OS20-Pro	OS40-Pro	OS70-Pro
Max. stirring quantity[H <sub>2</sub> O]	20L	40L	70L
Motor type	brushless DC motor	brushless DC motor	brushless DC motor
Motor input power	60W	120W	180W
Motor output power	50W	100W	160W
Voltage	100-240V, 50/60 Hz	100-240V, 50/60 Hz	100~240V, 50/60 Hz
Power	70W	130W	200W
Speed range	50-2200rpm	50-2200rpm	50~1100rpm
Speed display accuracy	$\pm 3$ rpm	$\pm 3$ rpm	$\pm 10$ rpm
Speed display	LCD	LCD	LCD
Torque display	LCD	LCD	LCD
Time settings range	-	-	0-99h59min
Overload protection display	LED lights	LED lights	LED lights
Max. torque	40Ncm	60Ncm	300Ncm
Viscosity max.	10000mPas	50000mPas	100000mPas
Chuck range diameter	0.5-10mm	0.5-10mm	0.5-10mm
Dimension[WxHxD]	83x220x186mm	83x 220x 186mm	186 x 83 x 220mm
Weight	2.8kg	2.8kg	3.2kg
Protection class	IP21	IP21	IP21
Permissible ambient temperature and humidity	5-40°C, 80%RH	5-40°C, 80%RH	5~40°C,80%RH
Data connector	RS232	RS232	RS232

# Overhead Stirrers

## OS20-S OS40-S

### LED Overhead Stirrer

#### Features

- High reliability and outstanding performance
- A wide range of speed from 50 to 2200rpm
- Brushless DC motor for long life, maintenance free and explosion proof
- LED screen for monitoring actual speed
- Safety circuits allow for safe stop function in anti-stall or overload conditions



Explosion-proof



Wide range of accessories



#### Specifications

	OS20-S	OS40-S
Max. stirring quantity(H <sub>2</sub> O)	20L	40L
Motor type	brushless DC motor	brushless DC motor
Motor input power	60W	120W
Motor output power	50W	100W
Voltage	100-240V, 50/60 Hz	100-240V, 50/60 Hz
Power	70W	130W
Speed range	50-2200rpm	50-2200rpm
Speed display accuracy	±3rpm	±3rpm
Speed display	LED	LED
Overload protection display	LED lights	LED lights
Max. torque	40Ncm	60Ncm
Viscosity max.	10000mPas	50000mPas
Chuck range diameter	0.5-10mm	0.5-10mm
Dimension[WxHxD]	83x220x186mm	83x.220x186mm
Weight	2.8kg	2.8kg
Protection class	IP21	IP21
Permissible ambient temperature and humidity	5-40°C, 80%RH	5-40°C 80%RH

## Universal plate stand

Dimension [W x D x H] : 200x310x780mm  
Material: stainless steel

**Cat. No.**

18900258



## Propeller stirrer

shaft length 400mm  
stirrer diameter 50mm

**Material:** 316L stainless steel

**Application:** Standard stirring element used at medium and high speeds

**Cat. No.**

18900071



## Straight stirrer

shaft length 40cm  
stirrer diameter 6cm

**Material:** 316L stainless steel

**Application:** Ideal for the mixing of low viscosity media at medium and high speeds

**Cat. No.**

18900072



## Paddle stirrer

shaft length 40cm  
stirrer diameter 6.8cm

**Material:** 316L stainless steel

**Application:** Suitable for samples needed gentle processing at low and medium speeds

**Cat. No.**

18900073



## Centrifugal stirrer

shaft length 40cm  
stirrer diameter 9cm

**Material:** 316L stainless steel

**Application:** Two-bladed stirrer whose blades open with increasing speed. perfect for stirring in round vessels with narrow necks. Medium to high speeds required.

**Cat. No.**

18900074



## Propeller stirrer

shaft length 35cm  
stirrer diameter 6.5cm

**Material:** PTFE coated

**Application:** Standard stirring element, used at medium and high speeds

**Cat. No.**

18900075



## Straight stirrer

shaft length 35cm  
stirrer diameter 7cm

**Material:** PTFE coated

**Application:** Ideal for the mixing of low viscosity media at medium and high speeds

**Cat. No.**

18900076



## Paddle stirrer

shaft length 35cm  
stirrer diameter 6.8cm

**Material:** PTFE coated

**Application:** Suitable for samples needed gentle processing at low and medium speeds

**Cat. No.**

18900077



## Centrifugal stirrer

shaft length 35cm  
stirrer diameter 8.5cm

**Material:** PTFE coated

**Application:** Two-bladed stirrer whose blades open with increasing speed. perfect for stirring in round vessels with narrow necks. Medium to high speeds required

**Cat. No.**

18900078



# Homogenizers

## D-160 Handheld Homogenizer

### Features:

- Ideal for manual operation due to its light weight and ergonomic design
- Processing range: 0.1-50mL or 1-250mL
- 316L stainless steel shafts are fully autoclavable and inert for highly corrosive solutions
- All shafts are interchangeable for easy dismantling and cleaning.
- 6 modes of motor speed from 8,000 to 30,000 rpm



### Specifications

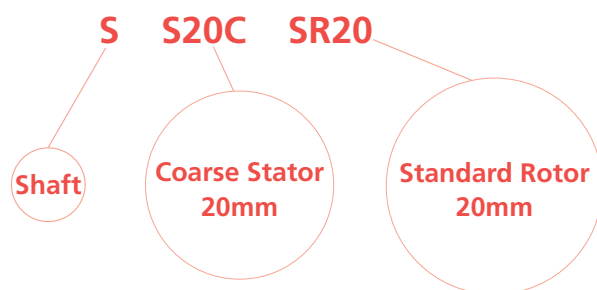
Power Supply	110-120V/60Hz 220-240V / 50-60 Hz
Motor Type	Universal motor AC carbon brush motor
Speed Range	8000-30000rpm
Max. Circum. Speed	6.3-14m/sec
Speed Control	Dial knob
Working Volume [ H <sub>2</sub> O]	0.1-50mL (Dispersing shaft DS-160/5) 1-250mL (Dispersing shaft DS-160/10)
Max. Viscosity	5,000mPas
Material of Dispersing Shaft	SS 316L stainless steel, PTFE
Weight	0.6 kg
Dimension [L x W x H]	46mm x 55mm x 230mm
Noise	72 dB(A)
Operating Environment	0-40°C, 85% rel. humidity
Protection Class	IP20

## D-500 Homogenizer

### Features:

- Viscosity up to 10,000 mPas
- 6 modes of motor speed from 10,000 to 30,000 rpm
- All-round safety guarantee for motor drive, overload protection and smooth operation
- 316L stainless steel shafts are fully autoclavable and inert for highly corrosive solutions
- Easy dismantling for fast preparation
- All shafts are interchangeable for easy dismantling and cleaning

	D-160	D-500
Power Supply	110-120V/60Hz 220-240V / 50-60 Hz	110-120V/60Hz 220-240V/50-60 Hz
Motor Type	160 W AC carbon brush motor	500 W AC carbon brush motor
Speed Range	8000-30000rpm	10000-30000rpm
Max. Circum. Speed	6.3-14m/sec	22.7-36m/sec
Speed Control	6 stage	6 stage
Working Volume [ H <sub>2</sub> O]	0.1-50mL (Dispersing shaft DS-160/5) 1-250mL (Dispersing shaft DS-160/10)	10-40000mL (Optional)
Max. Viscosity	5,000mPas	10,000 mPas
Material of Dispersing Shaft	SS 316L stainless steel, PTFE	SS 316L stainless steel, PTFE
Weight	0.6 kg	1.3 kg
Dimension [L x W x H]	46mm x 55mm x 230mm	70mm x 70mm x 255mm
Noise	72 dB(A)	79 dB(A)
Operating Environment	0-40°C, 85% rel. humidity	0-40°C, 85% rel. humidity
Protection Class	IP20	IP20





## D-500 Homogenizer

### DS-500/1

#### SS20CSR20

Volume 10-5000mL  
Max. Circum. Speed 22.7m/sec  
**Material:** 316L  
**Application:** for solid/liquid media

**Cat. No.**  
18201331



### DS-500/2

#### SS20FER20

Volume 10-5000mL  
Max. Circum. Speed 22.7m/sec  
**Material:** 316L  
**Application:** for water and oil mixing

**Cat. No.**  
18201332



### DS-500/5

#### SS5CSR5

Volume 10-5000mL  
Max. Circum. Speed 5,8m/sec  
**Material:** 316L  
**Application:** Ideal for all homogenizing applications such as tissue homogenization, cell disruption, suspensions and clinical and medical diagnostics

**Cat. No.**  
18900117



## D-160 Handheld Homogenizer

### DS-160/5

Volume 0.1-50ml  
Max. Circum. Speed 6.3m/sec  
**Material:** 316L  
**Application:** small amounts of solid-liquid mixed

### DS-160/10

Volume 1-250mL  
Max. Circum. Speed 14m/sec  
**Material:** 316L  
**Application:** small amounts of solid-liquid mixed

**Cat. No.**  
18201329



**Cat. No.**  
18201330



### Stator



S20C



S20F



S30C



S30F



S40C

### Rotor



SR20



SR30



CR20



CR30



MR20



MR30



ER20



ER30



# Centrifuges



## D1008 Series Palm Micro Centrifuge

### Features

- Ideal for microfiltration and quick spin-downs
- Easy-to-use with dual start/stop function
- 7000rpm fixed speed
- Compatible with 2mLx8 and PCR8x2 rotors
- Quiet running, noise level  $\leq 45$ dB
- Rotor change without tools
- Accelerates and brakes in seconds
- Available in two colors i.e., green, blue



Quiet operation



Vibration free



CE  FC



### Specifications

	D1008
Max. Speed	7000rpm
Max. RCF	2680xg
Rotor Capacity	0.2/0.5/1.5/2.0mLx8; 0.2mLx16 PCR strips or 0.2mLx2 PCR 8 strips
Run Time	Continuous operation
Driving Motor	DC motor
Power	AC100-240V/50Hz/60Hz 20W
Noise Level	$\leq 45$ dB
Dimension [DxWxH]	160x170x122mm
Weight	0.5kg
Certification	CE cTUVus FCC MCA

## Available rotors



**Cat. No.** 19400015

### A08-2

Max. speed: 7000rpm  
Max. RCF: 2680×g  
Rotor capacity: 2mL/1.5mL×8, 0.2mL×8, 0.5mL×8  
Rotor material: High strength plastic  
Available rotor adapters: SA02P2, SA05P2



**Cat. No.** 19400017

### A02-PCR8

Max. speed: 7000rpm  
Max. RCF: 2680×g  
Rotor capacity: 0.2mL×16 PCR strips, 0.2 mL×2 PCR 8 strips  
Rotor material: High strength plastic

## Available adapters



**Cat. No.** 19400029

### SA02P2

0.2mL rotor adapter  
Used with A08-2 rotor  
8pcs/pk



**Cat. No.** 19400026

### SA05P2

0.5mL rotor adapter  
Used with A08-2 rotor  
8pcs/pk



# High Speed Micro-Centrifuges

## High Speed Micro Centrifuge

High speed micro centrifuges are widely used in physical and chemical analysis, biochemistry, cellular and molecular biology, clinical Labs ideal for high-end research applications

- Sedimentation of cells and viruses
- Separation of sub-cellular organelles
- Isolation of macromolecules such as DNA, RNA, proteins or lipids

## Precise control

- Brushless DC motor accelerates quickly to the set speed
- High accuracy of speed in  $\pm 20$  rpm
- Digital timer adjustable from 30 sec. to 99 min or set for continuous run
- Timer starts only when the set speed is achieved and then maintains the accuracy of separation time.

## Conforms to international safety standards and regulations

- DLAB centrifuges passed CE, cTUVus and FCC requirements. certifications, they are certified by TUV. All DLAB test items are proven with the high level of reliability and confidence according to IEC/EN 61010-1, and pass MCA test according to IEC/EN61010-2-20, including explosion-proof and bio-safe tests.
- Quiet operation, maximum reliability
- High strength metal casing ensures security during centrifugal process
- Dual door interlock design for safety(D3024 & D3024R)
- Gentle braking at low speed with efficient separation

## Ergonomic design

- User-friendly large LCD display shows real-time information
- Both RPM or G-force can be set and displayed
- The parameters can be modified after the set speed is reached.
- The short spin function is used for quick spins by pressing and holding PULSE key. The centrifuge speed can be accelerated and held at the target speed
- Automatic lid-lock release prevents sample warming and allows easy access(excluding D3024R)
- Concise display and Sound-alert





# D2012 Series

## D2012 Plus High Speed Mini Centrifuge



Brushless DC motor



LCD display



CE FCC

### Specifications

	D2012 plus
Max. Speed	15000rpm(500-15000rpm), increment: 100rpm
Max. RCF	15100xg, increment: 100xg
Speed Accuracy	±20rpm
Rotor Capacity	0.2mL/0.5mL/1.5mL/2mL×12
Run Time	30sec-99min/Continuous
Driving Motor	Brushless DC motor
Safety Devices	Door interlock, Over-speed detection, Over-temperature detection, Automatic internal diagnosis
Power	Single-phase, AC100V-240V, 50Hz/60Hz, 3A 100W
Noise level	≤54dB
Acceleration /Braking time	11s ↑ /9s ↓
Dimension[D×W×H]	255×245×140mm
Weight	6kg
Certification	EMC, CE, FCC, ICES, cTUVus, CB
Advanced features	Speed/RCF switch, Short-time run function, sound-alert function

### Features

- Powerful centrifugal force of 15100xg and max. speed of 15000rpm ideal for various applications
- Brushless DC motor drive quickly accelerates the rotor to set speed
- Quiet working, Low noise ≤56dB
- D2012 Plus is proven by IEC/EN 61010-1
- D2012 Plus passed the rigorous explosion-proof test and accredited with CE, cTUVus, FCC certificates, and MCA test. MCA test according to IEC/EN61010-2-20

### Available rotors



Cat. No. 19400010

#### A12-2P for D2012plus only

Max. speed: 15000rpm  
Max. RCF: 15100xg  
Rotor capacity: 2mL/1.5mL×12,0.2mL×12,0.5mL×12  
Rotor material: High strength plastic  
Available rotor adapters: A02P2,A05P2

### Available adapters



Cat. No. 19500001

#### A02P2

0.2mL rotor adapter  
Used with A12-2, A12-2P, AS24-2 and A24-2P rotors  
24 pcs/pk

Cat. No. 19500002

#### A05P2

0.5mL rotor adapter  
Used with A12-2,A12-2P, AS24-2 and A24-2P rotors  
24 pcs/pk

## D1524R High-speed Refrigerated Micro Centrifuge

### Features

- Centrifuge chamber door with automatic adsorption door lock design, can be closed with a single finger.
- Precooling, the compressor will automatically start cooling as long as the set temperature is lower than the ambient temperature.
- Sound indicator to prompt that the upper cover is closed to maintain the temperature inside the chamber, after centrifugation.
- Advanced R290 fluorine free refrigerant, low carbon and environmental protection.
- Maximum rotation speed can be achieved even at 4°C.
- Up to 9 program storage capacity according to experimental needs.
- Biosafety rotor, three-layer seal for biosafety
- High-strength aluminum alloy, three layered biosafety to withstand numerous high temperature and high pressure sterilizations.
- Five rotors with 0.2mL, 0.5mL, 1.5mL, 2mL and 5mL centrifuge tubes/ PCR tubes capacity.
- An external condensation tank prevents condensate within the centrifuge chamber.



Centrifuge chamber door with automatic adsorption door lock design.



Powerful cooling capacity compressor

Clear LCD large display

Intuitive operation control panel



### Specifications

	D1524R
Max. Speed	15,000rpm (200-15,000rpm) in 100rpm increments.
Max. RCF	21,380×g, step: 10×g
Capacity	1.5/2mL×24, 0.5mL×36, PCR8×4, 5mL×12, 5mL×18.
Temperature setting	-20°C- 40°C
Run Time	30s-99 min; HOLD (continuous running)
Motor Type	DC brushless motor
Safety Performance	Dual door lock, over-speed detection, over-temperature detection with Internal diagnosis system.
Power Requirements	Single phase, 200-240V, 50Hz, 500W
Dimensions(mm)	332(Width) × 553(depth) × 283(height)
Weight	30kg
Acceleration and deceleration time	25s ↑ 25s ↓
Noise	≤56dB
Other functions	Rotation speed/RCF switchover, inching operation, running process indicator, sound alert. Acceleration/ deceleration in 9 steps, program storage capacity.

## D3024 Series

### D3024

#### High Speed Micro Centrifuge

##### Unique Features

- Special multi-flow air cooling design with patent ensures fast cooling of the rotor and low energy consumption
- Temperature display appropriate for gentle handling of sensitive samples
- Three-layer sealed rotor prevents accidental leakage during centrifugal process allowing risk-free microbial contamination
- High strength aluminum alloy rotor can be fully autoclaved for unlimited service life
- Four rotors are optional complete with 24 places 1.5/2.0mL tubes, bigger 5.0mL, smaller 0.2mL and 0.5mL tubes with adapters



### D3024R

#### High Speed Refrigerated Micro Centrifuge

##### Powerful cooling system for precise temperature control

- Pre-cooling program ensures optimal protection of the sample before warming
- Guaranteed 4°C cooling within only 7 minutes of both chamber and samples even at maximum speed and capacity utilization
- Sound-alert allows your undivided attention on other tasks warming
- Lid lock facility allows for internal temperature maintenance even after centrifugation
- Intermittent temperature control mode, CFC-free refrigerant and low carbon life rotor capacity
- Three-layer sealed rotor prevents accidental leakage during centrifugal process allowing risk-free microbial contamination
- High strength aluminum alloy rotor can be fully autoclaved for unlimited service life
- Four rotors are optional complete with 24 place 1.5/2.0mL tubes, bigger 5.0mL, smaller 0.2mL and 0.5mL tubes with the use of adapters
- Quiet running, noise level  $\leq$  54dB



# D3024 Series



Brushless DC motor



Wide range of rotors



CE FC



CE FC

## Specifications

	D3024	D3024R
Max. Speed	15000rpm(200-15000rpm), increment:10rpm	15000rpm(200-15000rpm), increment:10rpm
Max. RCF	21380×g, increment:10×g	21380×g, increment:10×g
Speed Accuracy	±20 rpm	±20 rpm
Temperature Range	-	-20°C-40°C
Rotor Capacity	5mL×18, 5mL culture tubex12 0.2mL/0.5mL/1.5mL/ 2mL×24, 0.5mL×36, PCR8×4	5mL×18, 5mL culture tubex12 0.2mL/0.5mL/1.5mL/ 2mL×24, 0.5mL×36, PCR8×4
Run Time	30sec-99min/Continuous	30sec-99min/Continuous
Motor	Brushless DC motor	Brushless DC motor
Safety Devices	Dual door interlock, Over-speed detection, Automatic internal diagnosis	Dual door interlock, Over-speed detection, Over-temperature detection, Automatic internal diagnosis
Power	Single-phase, AC200V-400V, 50Hz/60Hz, 5A, AC100V-120V, 50Hz/60Hz, 8A 200W	Single-phase, AC200V-240V, 50Hz/60Hz, 10A, AC100V-120V, 50Hz/60Hz, 10A 400W
Acceleration /Braking time [Sec]	25s ↑ 25s ↓	25s ↑ 25s ↓
Dimension[W×D×H]	280×364×266mm	338×580×324mm
Weight	12kg	30kg
Certification	CE cTUVus FCC MCA	CE cTUVus FCC MCA
Advanced Features	Speed/RCF switch; Short-time run function; sound-alert function	Speed/RCF switch; Short-time run function; sound-alert function
Noise Level	≤64dB	≤56dB







DLAB rotors are manufactured from military-industrial grade aluminum alloy with high mechanical strength for precise running and safety (excludes D2012 plus rotor)

- Every rotor can reach a max. speed of 15000rpm
- Rotors are seated on a tapered shaft, concentric and self-aligning, perfect to achieve running stability at high speeds
- D3024 & D3024R with bio-safety rotors/ anti- sample overflow prevents accidental leakage and risk free centrifugal process
- microbial contamination. D3024 & D3024R rotors have passed MCA test according to IEC/EN61010-2-20, including mechanical safety and bio-safety tests
- High strength aluminum alloy rotors are fully autoclavable and provide unlimited service life (D2012 plus rotor not included)
- Powerful cooling system minimizes rotor heating. D3024 rotors heat up to > 10°C and D2012 rotors less than 8°C after running an hour

### Seals within the aluminum alloy rotor

## Rotor Features

### Fully autoclavable

High strength aluminum alloy rotors are fully autoclavable, withstanding steam sterilizing at 121°C for 20 minutes, with unlimited service life.

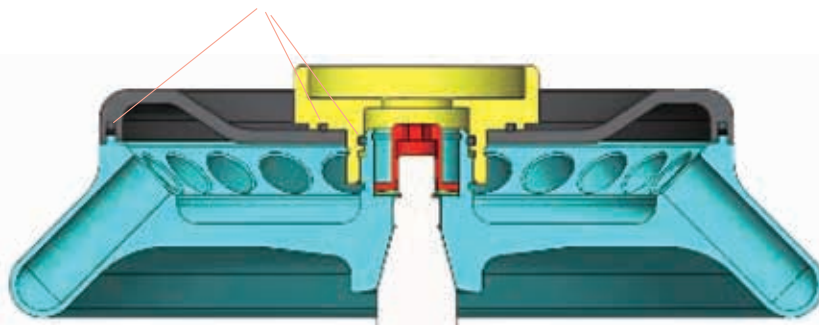
### Bio-safety

Aspired to be the top-of-the-line model, D3024 & D3024R rotors are designed to prevent sample leakage. Each and every rotor is hermetically sealed by three rubber seals.

### Mechanical safety

DLAB centrifuges are constructed under MCA conditions according to IEC/EN61010-2-20, causing disruption by partially cutting and overloading rotor assembly, and guarantee that no part shall be detached to cause danger to person or the environment.

Three rubber seals fitted to achieve bio-safe condition





## Available rotors



**Cat. No.** 19400006

### AS24-2

for D3024 & D3024R & D1524R

Max. speed: 15000rpm  
 Max. RCF: 21380×g  
 Rotor capacity: 2mL/1.5mL×24/0.2mL×24/0.5mL×24  
 Rotor material: Aluminum alloy  
 Bio-safe(Bio sealing): Yes  
 Available rotor adapters: A02P2,A05P2



**Cat. No.** 19400032

### AS12-V5

for D3024 & D3024R & D1524R

Max. speed: 15000rpm  
 Max. RCF: 21380×g  
 Rotor capacity: 5mL×12(Cone bottom)  
 Rotor material: Aluminum alloy  
 Bio-safe(Bio sealing): Yes



**Cat. No.** 19400007

### AS36-05

for D3024 & D3024R & D1524R

Max. speed: 15000rpm  
 Max. RCF: 21380×g  
 Rotor capacity: 0.5mL×36,0.2mL×36  
 Rotor material: Aluminum alloy  
 Bio-safe(Bio sealing): Yes  
 Available rotor adapters: A02P05



**Cat. No.** 19400008

### AS4-PCR8

for D3024 & D3024R & D1524R

Max. speed: 15000rpm  
 Max. RCF: 21380×g  
 Rotor capacity:0.2mL/PCR8×4  
 Rotor material: Aluminum alloy  
 Bio-safe(Bio sealing): Yes

# D1524R & D3024 Series | Rotors and Adapters



**Cat. No.** 19400012

## AS18-5

for D3024 & D3024R & D1524R

Max. speed :15000rpm  
Max. RCF:21380×g  
Rotor capacity:5mL×18 ( Round bottom )  
Rotor material:Aluminum alloy  
Bio-safe(Bio sealing):Yes

## Available adapters



**Cat. No.** 19500001

## A02P2

0.2mL rotor adapter  
Used with A12-2, A12-2P, AS24-2 and A24-2P rotors  
24pcs/pk



**Cat. No.** 19500002

## A05P2

0.5mL rotor adapter  
Used with A12-2, A12-2P, AS24-2 and A24-2P rotors  
24pcs/pk



**Cat. No.** 19500003

## A02P05

0.2mL rotor adapter  
Used with AS36-05 rotor  
36pcs/pk



DLAB hematocrit centrifuge with AC24P hematocrit rotor is used for determination of volume fractions of erythrocytes in blood for diagnostic purposes and doping tests. Also it is used for the photometric determination of bilirubin content in neonate blood samples. Hematocrit centrifuge with A24-2P tube rotor, can be used for extraction of DNA and RNA.

## DM1424 Hematocrit Centrifuge

### Features:

- Speed range of 200-14000rpm, max. RCF 18620×g
- Precise control of speed and time separately
- Easy operation with intuitive menu and easy-to-read display
- Maintenance-free brushless DC motors
- Pulse operation for quick spins
- Rotor capacity: Hematocrit rotor:
- Hematocrit rotor:24 capillary max. speed:12000rpm
- Tube rotor: 1.5/2mL×24 max. speed: 14000rpm



CE FC

## DM1224 Economical Hematocrit Centrifuge

### Features:

- Max.speed is 12000rpm, max. RCF 13680×g
- Precise control of speed and time separately
- Rotor capacity: Hematocrit rotor: 24 capillary



### Specifications

	DM1424	DM1224
Speed Range	200-14000rpm, increment: 10rpm	500-12000rpm, increment: 100rpm
Max. RCF	18620×g	13680×g
Speed Accuracy	±20	±100
Rotor Capacity	2 type	1 type
Run Time	30sec-99min/Continuous	10sec-99min/Continuous
Motor	Brushless DC motor	Brushless DC motor
Display	LCD	LCD
Safety Devices	Door interlock, Overspeed detector; Automatic internal diagnosis, Automatic rotor identification	Door interlock
Acceleration/Braking time	30s ↑ 30s ↓	40s ↑ 40s ↓
Power	Single-phase, 200V-240V, 50Hz/60Hz, 5A; 100V-120V, 50Hz/60Hz, 5A 160W	Single-phase, 200V-240V, 50Hz/60Hz, 5A; 380W
Dimension[WxDxH]	280×364×274mm	280×364×213mm
Weight	10kg	10kg
Certification	CE cTUVus FCC MCA IVD	-
Advanced features	Speed/RCF switch; Short-time run function; sound-alert function	Speed/RCF switch; Short-time run function; sound-alert function

# DM1424 Series | Rotors and Adapters

## Available rotors



### A24- 2P DM1424

Cat. No. 19400013

Max. speed: 14000rpm  
Max. RCF: 18620×g  
Rotor capacity: 2mL/1.5mL×24,0.2mL×24,0.5mL×24  
Rotor material: High strength plastic  
Available rotor adapters: A02P2,A05P2,A10P15 & Mat



### AC24 DM1424 & DM1224

Cat. No. 19400047

Max. speed: 12000rpm  
Max. RCF: 13680×g  
Rotor capacity: capillary tubes x24  
Rotor material: High strength aluminum

## Available adapters



### A02P2

Cat. No. 19500001

2mL to 0.2mL rotor adapter, used with A12-2, A12-2P, AS24-2 and A24-2P rotors, 24pcs/pk



### A05P2

Cat. No. 19500002

2mL to 0.5mL rotor adapter, used with A12-2, A12-2P, AS24-2 and A24-2P rotors, 24pcs/pk



### A02P05

Cat. No. 19500003

Rotor adapter, used with A12-10P, 12pcs/pk

# Low-speed Centrifuges

DLAB Low-speed centrifuges are widely used in the separation of serum, plasma, urea, blood samples and other routine applications in hospital and research laboratories.

## Conforms to international safety standards and regulations

- DLAB Low-speed centrifuges are marked with CE, cTUVus and FCC, and passed the explosion-proof test / MCA test according to IEC/EN61010-2-20
- Passed EN 61010-2-101:2002 particular requirements for In-vitro diagnostic (IVD) medical equipment
- High strength plastic rotor gives excellent balance to guarantee stable operation
- Dual protection housing particularly advantageous for safe running
- Brushless DC motor precisely accelerates to the set speed



## Precise control

- Powerful CPU for easy operation of speed, time and all other parameters
- High accuracy of speed
- Digital timer adjustable from 30 sec. to 99 min or set for continuous run
- Gentle braking at low speeds with efficient separation

## Ergonomic design

- Easy operation thanks to intuitive menu and easy-to-read display
- RPM or G-force can be set and displayed
- Parameters can be modified after the set speed is reached
- Pressing and holding PULSE key for quick spin function
- Automatic lid-lock release
- Easy-to-read processing display and sound alert





## DM0412 Series

DLAB DM0412 & DM0412S Low-speed centrifuges support small volumes applications. The centrifuges are supplied with an angle rotor that can hold up to 50mLx6, 15mLx6 (A6-50P), 15mLx8, or 10mL/7mL/5mLx12 (A12-10P) vacuum tubes.

They are widely used in medical and veterinary practices for the centrifugation of blood and urine samples in qualitative analysis of water and soil samples. These centrifuges are also used in universities and other research institutes

### DM0412 Low-speed Centrifuge

#### Features:

- Easy programming to achieve high accuracy of speed control
- Easy operation with intuitive menu and easy-to-read display
- Rotor speed can be set and displayed by RPM or G-force
- Maintenance-free brushless DC motors
- Quick spin function with press and hold pulse key
- Lid with electric lock and automatic release function saves processing time and prevents samples overheating
- Automatic self-diagnosis on startup showing accumulative running time and last running parameters
- Braking time 2 gears adjustable (for A6-50P rotor)
- A12-10P and A6-50P are not interchangeable

### DM0412S Economical Low-speed Centrifuge

#### Features:

- speed range of 300-4500rpm
- Individual control of speed and time
- Faster acceleration and deceleration
- Perfectly suitable for 15mL cell culture tubes and a full line of collection tubes



## DM0412 Series



CE  FC

### Specifications

	DM0412	DM0412S
Speed Range	300-4500rpm, increment: 100rpm	300-4500rpm, increment:100rpm
Max. RCF	2490×g	2490×g
Speed accuracy	±20rpm	±100rpm
Rotor type	A12-10P, A6-50P	A12-10P
Run Time	30sec-99min HOLD(Continuous operation)	1sec-99min HOLD(Continuous operation)
Motor	Brushless DC motor	DC motor
Display	LCD	LED
Safety Devices	Door interlock, Overspeed detector; Automatic internal diagnosis	Door interlock, Over-speed detection
Acceleration/Braking time	A12-10P: 20s ↑ 13s ↓ A6-50P: 20s ↑ 20 s /90 s ↓	23s ↑ 23s ↓
Power	Single-phase, 100V-240V,50Hz/60Hz, 3A 70W	Single-phase,200V-240V,50Hz/60Hz, 3A;100V-120V,50Hz/60Hz, 3A 70W
Dimension[WxDxH]	301×354×217mm	301×354×217mm
Weight	6kg	6kg
Certification	CE, cTUVus, IVD	-
Advanced features	Speed/RCF switch;Short-time run function; sound-alert function	sound-alert function



# DM0412 Series | Rotors and Adapters

## Available rotors



Cat. No. 19200348

### A12-10P

for DM0412 & DM0412s & DM0424 & DM0408

Max. speed: 4500rpm  
 Max. RCF: 2490×g  
 Rotor capacity: 8×15mL, 12×10mL  
 Rotor material: High strength plastic













Cat. No. 19100197

### A6-50P

For DM0412(A6-50P)

Max. speed: 4000rpm  
 Max. RCF: 1800×g  
 Rotor capacity: 50ml×6, 15ml×6  
 Rotor material: High strength plastic

Available tubes	Tube quantity	Dimension (ΦL×mm)	Adapters	Maximum speed(rpm)	Radius (cm)	Maximum RCF (×g)
15mL con 	8	17×120		4500	11	2490
1.5-5mL vacu 	12	13×75	A10P15 & Plug 	4500	9.8	2218
4-7 mL vacu 	12	13×100	A10P15 	4500	11	2490
		16×75			9.8	2218
8.5-10 mL vacu 	12	16×107		4500	11	2490
2.7-3 mL(EU) collection tube 	12	11×66	A10P15 & Plug 	4500	9.8	2218
7.5-8.2 mL(EU) collection tube 	12	15×92	A10P15 	4500	11	2490

Note: Made of plastic, A12-10P rotor cannot be autoclaved or applied with UV irradiation. Regular sterilization is recommended.

## DM0424 & DM0408 Series

D LAB low speed clinical centrifuges are widely used in the medical industry. Ideal for separation of serum, plasma, urine, fecal samples in biochemical & medical laboratories. It is an essential equipment of every clinical laboratory, blood bank, medical college and medical research institute.

### DM0424 Clinical Centrifuge

#### Features:

- Max. speed 4000rpm.
- Rotor speed can be set in RPM/RCF, with 3 programs storage capacity for routine applications.
- Max. capacity 50ml×4, Adapt to different sizes of blood collection tubes and centrifuge tubes suitable for swing out rotor and angle rotor.
- Automatic internal diagnosis and self-detection.
- Maintenance-free brushless DC motor.



### DM0408 Clinical Centrifuge

#### Features:

- Speed range of 300-4000rpm.
- 3 programs storage capacity for routine applications.
- Automatic internal diagnosis.
- Maintenance free brushless DC motor.



#### Specifications

	DM0424	DM0408
Speed range	500-4000rpm increment: 100rpm	300-4000rpm increment: 100rpm
Max. RCF	2500×g	1900×g
Speed accuracy	±100rpm	±100rpm
Rotor	Swing6×15ml Swing4×50ml Angle 24×15 ml, Angle 12×10ml/8×15ml	Angel 8×15ml(Default), Angel 10ml×12
Run time	1-99min, HOLD	1-99min, HOLD
Motor	Brushless DC motor	Brushless DC motor
Display	LCD	LED
Program	Blood: 3200rpm,10min. Urine: 1800rpm,5min. Faecal: 1300rpm,10min.	Blood: 3200rpm, 10min Urine: 1800rpm,5min Faecal: 1300rpm, 10min
Safety Device	Automatic internal diagnosis	Automatic internal diagnosis
Acceleration/deceleration	3 ↑ 4 ↓ steps	25s ↑ 35s ↓
Power	Single phase, 100V-240V, 50Hz/60Hz	Single phase, 100V-240V, 50Hz/60Hz
Dimension(W×D×H)	364×440×268mm	286×367×227mm
Weight	14.5kg	9.2kg
Noise	≤62dB(A)	≤60dB(A)



# DM0424 & DM0408 Series | Rotors and Adapters

## Available rotors



### S6-15 **Cat. No.**19400082 for DM0424

Max. speed: 4000rpm  
Rotor capacity: 15ml×6  
Rotor material: Aluminum alloy  
Default adaptor: A15P22, A5P17



### S4-50 **Cat. No.**19400100 for DM0424

Max. Speed: 4000rpm  
Rotor capacity: 50ml×4  
Rotor material: Aluminum alloy  
Default adaptor: A15P30, A5P17



### A24-15P **Cat. No.**19400101 for DM0424

Max. speed: 4000rpm  
Rotor capacity: 15ml×24  
Rotor material: High strength plastic  
Default adaptor: A15P22, A5P17



### A8-15P **Cat. No.**19400084 for DM0424/DM0408

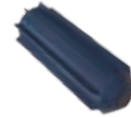
Max. Speed: 4000rpm  
Rotor capacity: 15ml×8  
Rotor material: High strength plastic  
Default adaptor: A15P22



### A12-10P **Cat. No.**19200348 for DM0424/DM0408 DM0412/DM0412S

Cat.No. 19200348  
Rotor capacity: 15ml×8, 10ml×12  
Rotor material: High strength plastic

## Available adapters



### A15P30 **Cat. No.**19500024

50ml change 15ml adapter,  
Adapted to 17×120mm centrifuge  
tube, 13/16×100mm blood  
collection tube 4pcs/pk,  
for S4-50



### A15P22 **Cat. No.**19500021

15ml adapter for 17×120mm  
centrifuge tube, 13/16×100mm  
blood collection tube 24 pcs/pk,  
for S6-15, A24-15P, A8-15P



### A5P17 **Cat. No.**19500022

5ml adapter, Adapted to 13×75mm  
blood collection tube 24 pcs/pk,  
for S4-50, S6-15, A24-15P



### A2P17 **Cat. No.**19500023 (Optional)

1.5/2ml Cryogenic Vials/ centrifuge  
tube adapter, 24 pcs/pk, for S4-50,  
S6-15, A24-15P, A12-10P, A6-50P





## DM0636 Series

DLAB DM0636 Multi-Purpose Low-speed Centrifuge is ideal for the centrifugation of samples in clinical chemistry, cytology, research laboratories, industrial laboratories, etc.

This centrifuge is suitable for tubes with caps, blood collection or urine tubes. Swing-out bucket rotors and adapters can be compatible with standard tubes up to 100mL at low speed.

### DM0636 Multi-Purpose Low-speed Centrifuge

#### Features

- Speed can be set from 300- 6000rpm
- Maximum capacity of the centrifuge: 100 mLx4
- 9 Acceleration/10 Brake speed settings to ensure optimal separation
- A wide range of accessories(fixed angle and swing-out bucket rotors)
- Automatic rotor identification
- Timers can be set up to 99 min. for short run/ continuous run
- 9 procedures stored in memory makes the operation much simplified
- Maintenance-free brushless DC motors



#### Specifications

	DM0636
Speed range	300-6000rpm increment:10rpm
Max. RCF	4300xg
Speed accuracy	±20rpm
Max. Capacity	100mLx4
Run Time	30sec-99mins/continuous
Motor	Brushless DC
Display	LCD
Program Memory	9
Safety Devices	Door Imbalance protection Over speed & Over temperature detection
Acceleration/Deceleration	9 ↑ /10 ↓ steps
Power	660W; Single-phase AC220V-240V, 50Hz/60Hz, 6.3A; AC110V-120V,50Hz/60Hz,10A
Dimension[WxDxH]	445x579x269mm
Weight	36kg
Certification	CE
Advanced features	speed/rcf switch; Rotor identification

# DM0636 Series | Rotors and Adapters



## Uncapping block

for S4-100 rotor



## SE4-100(Standard accessory) for DM0636 & DM0636R

Cat. No. 19400041

Max. speed: 4000rpm

Max. RCF: 2950xg

Rotor material: stainless steel body and adapter



19400045



19400044



19400043



19400042

bucket	x 4											
tube	x 36		x 16			x 8	x 4	x 4	x 4	x 8	x 20	
Nominal volume	3-7mL		10mL	12mL	15mL	50mL	100mL	85mL	50mL	15mL	3-7mL	
φ×L mm	13×75	13×100	16×100	17×105	17×120	29.5×100	38×108	38×104	29.5×100	17×120 13×100 13×75	13×100 13×75	
tube												
adapter	with plug						 A100P80		 A100P50		 A100P15	 A100P10
Package	36						4		4	8	4	
Tubes per rotor	36	36	16	16	16	8	4	4	4	8	20	
Radius(cm)	14	16.5	15.9	15.9	15.9	15.9	15.9	15.9	15.9	15.1	14.7	
Max RCF (g-force)	2500	2950	2840	2840	2840	2840	2840	2840	2840	2700	2630	

## Available rotors



**Cat. No.** 19400062

### S2-MP

DM0636

Max. speed: 4000rpm

Max. RCF: 2200×g

Rotor capacity: Micro-plates 384-PCR; 96-PCR

Rotor material: stainless steel body and aluminum buckets



**Cat. No.** 19400036

### AS12-PCR8

DM0636

Max. speed: 6000rpm

Max. RCF: 4020×g

Rotor capacity: PCR 8 trips×12

Rotor material: aluminum

Bio-safe(Biosealing): Yes



**Cat. No.** 19400034

### AS30-2

DM0636

Max. speed: 6000rpm

Max. RCF: 4020×g

Rotor capacity: 2mL×30

Rotor material: aluminum

Bio-safe(Biosealing): Yes



**Cat. No.** 19400037

### AS60-2

DM0636

Max. speed: 6000rpm

Max. RCF: 4020×g

Rotor capacity: 2mL×60

Rotor material: aluminum

Bio-safe(Biosealing): Yes

# DM0636 Series | Rotors and Adapters

## Available rotors



### AS6-50V

Cat. No. 19400038

DM0636

Max. speed: 6000rpm  
 Max. RCF: 4020×g  
 Rotor capacity: 50mL×6 or 15mL×6  
 Rotor material: aluminum  
 Bio-safe(Biosealing): Yes



### AS18-5V

Cat. No. 19400035

DM0636

Max. speed: 6000rpm  
 Max. RCF: 4020×g  
 Rotor capacity: 5mL×18  
 Rotor material: stainless steel body and aluminum buckets



### A8-50

Cat. No. 19400039

DM0636

Max. speed: 5000rpm  
 Max. RCF: 3960×g  
 Rotor capacity: 50mL×8 or 15mL×16  
 Rotor material: aluminum body and stainless steel adapter



### A30-15

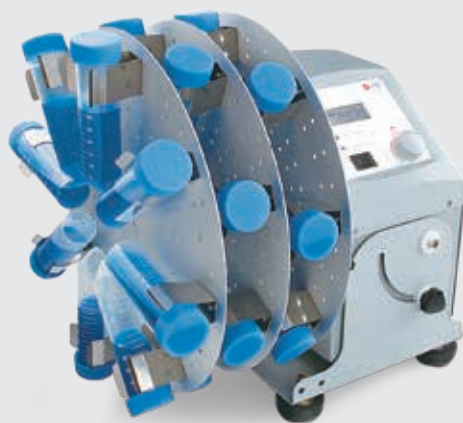
Cat. No. 19400040

DM0636

Max. speed: 4500rpm  
 Max. RCF: 3210×g  
 Rotor capacity: 15mL×30  
 Rotor material: aluminum body and stainless steel adapter  
 Bio-safe(Biosealing): Yes

Capacity	3-7mL Blood collection tube	10mL Blood collection tube	12mL urine tube	15mL
φ×L mm	13×100	16×100	17×105	17×120
Tubes Quantity	30	30	30	30

# Miscellaneous





# Vortex Mixers



DLAB Vortex Mixers are ideal instruments for mixing liquid components in tubes, resuspension of cells, using an eccentric mechanism. They are widely used in biological and chemical analysis applications.

## MX-S Vortex Mixer

## MX-F Vortex Mixer

### Features:

- Touch operation or continuous mode
- Variable speed control from 0 to 2500rpm (MX-S)
- Fixed Speed 2500rpm (MX-F)
- Used for various mixing applications with optional adapters (MX-S)
- Specially designed vacuum suction feet for body stability
- Robust aluminum-cast construction



Wide range of accessories

### Specifications

	MX-S (Adjustable speed)	MX-F (Fixed speed)
Voltage	100-120V/200-240V,50/60Hz	100-120V/200-240V,50/60Hz
Power	60W	60W
Mixing motion	Orbital	Orbital
Orbital diameter	4mm	4mm
Motor type	Shaded pole motor	Shaded pole motor
Motor rating input	58W	58W
Motor rating output	10W	10W
Speed range	0-2500rpm	2500rpm
Speed display	Scale	-
Run type	Touch operation/ Continuous	Touch operation/ Continuous
Dimension[WxHxD]	127x130x160mm	127x130x160mm
Weight	3.5kg	3.5kg
Permissible ambient temperature	5-40°C	5-40°C
Permissible relative humidity	80%RH	80%RH
Protection class	IP21	IP21



### VT1.1 Standard top (Default)

for <math>\varnothing</math>30mm tubes and small vessels

Cat. No. 18900034





## MX-E Economic Vortex Mixer

### Features:

- For small amount of sample mix
- Touch operation
- Fixed speed: 3000rpm
- Small and beautiful
- DC brushless motor, stable performance



### Specifications

	MX-E
Power supply [VAC]	100-240
Frequency [Hz]	50/60
Power [W]	12
Mixing motion	Orbital
Revolving diameter [mm]	4.8
Motor rating output[W]	10
Rotational speed [rpm]	3000
Operating mode	Inching
External dimension [mm]	133×133×80
Dimension of packing box [mm]	250×185×130
Weight [kg]	0.6
Allowable environment temperature [°C]	5-40
Permissible Ambient Temperature	≤80%RH
Protection class	IP21



# Vortex Mixers | Accessories



## VT1.2 Tube holding rod

used with tube adapters

**Cat. No.** 18900044

## VT1.3 Universal top plate

Ø 100mm

**Cat. No.** 18900035



## VT1.3.1 tube adapter

for 48 holes test tubes, Ø6mm

**Cat. No.** 18900020



## VT1.3.2 tube adapter

for 15 holes test tubes, Ø10mm

**Cat. No.** 18900021



## VT1.3.3 tube adapter

for 12 holes test tubes, Ø12mm

**Cat. No.** 18900022



## VT1.3.4 tube adapter

for 8 holes test tubes, Ø16mm

**Cat. No.** 18900023



## VT1.3.5 tube adapter

for 8 holes test tubes, Ø20mm

**Cat. No.** 18900024



## VT1.3.6 Platform pad

for <math>\lt; \text{Ø}99\text{mm}</math> tubes and small vessels

**Cat. No.** 18900043



### Application of accessories

Accessories	Adjustable speed model (0-2500rpm)	
	Touch mode (High speed area)	Continuous mode (Low speed area)
VT1.1	Y	Y
VT1.2 + VT1.3.1	Y	
VT1.2 + VT1.3.2	Y	
VT1.2 + VT1.3.3	Y	
VT1.2 + VT1.3.4	Y	
VT1.2 + VT1.3.5	Y	
VT1.3 + VT1.3.6	Y	
VT1.3 + VT1.3.1		Y
VT1.3 + VT1.3.2		Y
VT1.3 + VT1.3.3		Y
VT1.3 + VT1.3.4		Y
VT1.3 + VT1.3.5		Y



## VT1.3.7 vacuum chuck

made of rubber

**Cat. No.** 18900158



DLAB Microplate Mixer is used for holding single or double microplates. The compact shape of MX-M Microplate Mixer occupies less bench space and makes the storage easier. It is widely used in life sciences including microbiology, cell and molecular biology, immunology and biotechnology.

## MX-M Microplate Mixers

### Features:

- A wide range of speed from 0 to 1500rpm
- Used for various mixing applications with optional adapters
- Maintenance-free brushless DC motor



### PS1.1 Universal top plate

Used with tube adapters

**Cat. No.**18900067



### VT1.3.1 tube adapter

for 48 holes test tubes, Ø6mm

**Cat. No.**18900020



### VT1.3.2 tube adapter

for 15 holes test tubes, Ø10mm

**Cat. No.**18900021



### VT1.3.3 tube adapter

for 12 holes test tubes, Ø12mm

**Cat. No.**18900022



### VT1.3.4 tube adapter

for 8 holes test tubes, Ø16mm

**Cat. No.**18900023



### VT1.3.5 tube adapter

for 8 holes test tubes, Ø20mm

**Cat. No.**18900024



Brushless DC motor

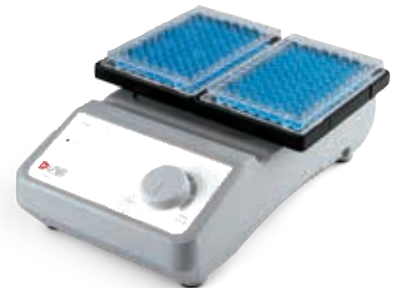


Wide range of accessories



### PS1.2 Microplate clamp

**Cat. No.**18900042



### MXM-116

Double microplate clamps

**Cat. No.**18900079

### Specifications

Shaking movement	Orbital
Orbital diameter	4.5mm
Max. shaking weight (with accessory)	0.5kg
Motor type	Brushless DC motor
Motor rating input	18W
Motor rating output	10W
Speed range	Single microplate: 0-1500rpm Double microplate: 0-1000rpm
Speed display	Scale
Voltage	100-240V,50/60Hz
Power	20W
Dimension	260×150×80mm
Weight	3kg
Permissible ambient temperature and humidity	5-40°C,80%RH
Protection class	IP21

	MX-M
Shaking movement	Orbital
Orbital diameter	4.5mm
Max. shaking weight (with accessory)	0.5kg
Motor type	Brushless DC motor
Motor rating input	18W
Motor rating output	10W
Speed range	Single microplate: 0-1500rpm Double microplate: 0-1000rpm
Speed display	Scale
Voltage	100-240V,50/60Hz
Power	20W
Dimension	260×150×80mm
Weight	3kg
Permissible ambient temperature and humidity	5-40°C,80%RH
Protection class	IP21

# Rotators

DLAB rotators give gentle but effective mixing of biological samples held in 1.5mL to 50mL tubes, and are used in a variety of applications including immune precipitations, prevention of blood coagulation, latex diagnostics, etc.

## MX-RD-Pro LCD Digital Rotator

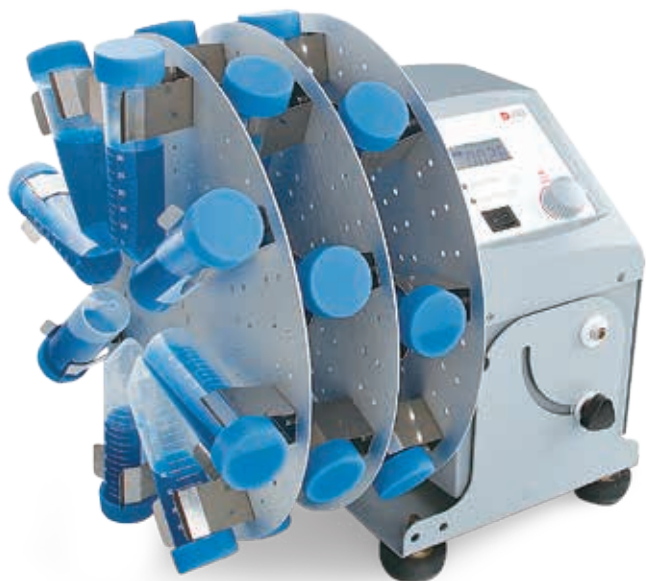
### Features

- Electronic adjustment of speed and time
- LCD display of speed and time
- Speed range from 10 to 70rpm
- Rolling action, gives gentle but effective mixing
- Adjustable mixing angle from 0 to 90°
- A wide variety of accessories are available

## MX-RD-E Economical Rotator

### Features

- Provides gentle and effective mixing of biological samples
- Adjustable speed range from 0 to 80rpm
- A wide variety of accessories are available



LCD display



Adjustable angle



Wide range of accessories



### Specifications

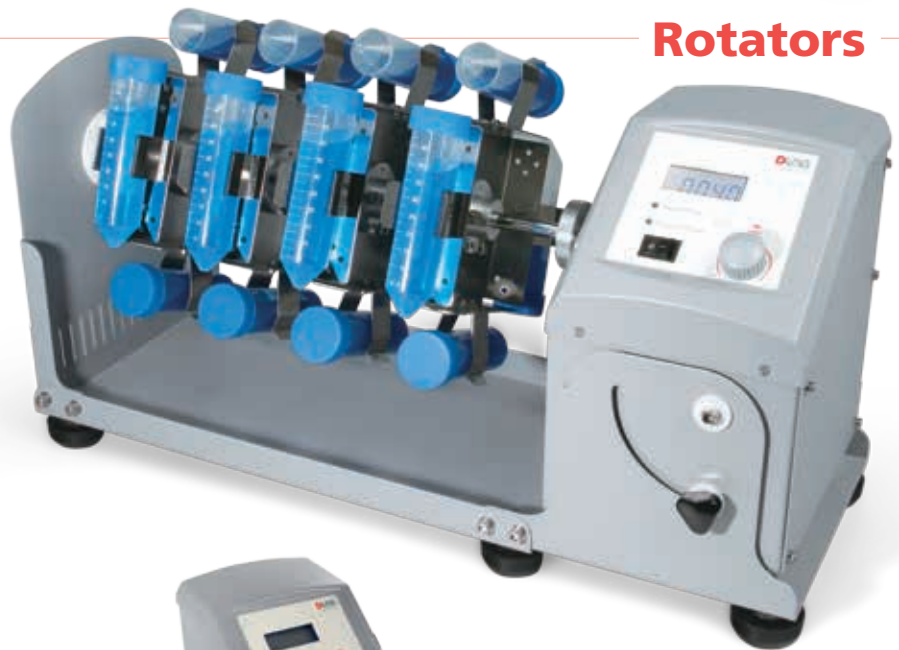
	MX-RD-Pro	MX-RD-E
Motor type	DC motor	DC motor
Tilt angle	0-90°	-
Speed range	10-70rpm	0-80rpm
Speed display	LCD	Scale
Timer display	LCD	Scale
Timer	1-1199min	-
Operation mode	Continuous / timer	Continuous
Voltage	100-240V, 50/60Hz	100-240V, 50/60Hz
Power	40W	20W
Dimension [DxWxH ]	280x210x300mm	300x220x310mm
Permissible ambient temperature and humidity	5-40°C, 80%RH	5-40°C, 80%RH
Protection class	IP21	IP21



## MX-RL-Pro LCD Digital Rotator

### Features

- Electronic adjustment of speed and time
- LCD display speed and time
- Speed range from 10 to 70rpm
- Provides gentle but effective rolling
- A wide variety of accessories are available



## MX-RL-E Economical Rotator

### Features

- Provides gentle but effective rolling
- Adjustable speed range from 0 to 80 rpm
- A wide variety of accessories are available



LCD display

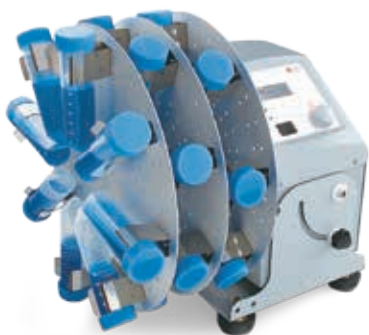


Wide range of accessories



### Specifications

	MX-RL-Pro	MX-RL-E
Motor type	DC motor	DC motor
Speed range	10-70rpm	0-80rpm
Speed display	LCD	Scale
Timer display	LCD	Scale
Timer	1-1199min	-
Operation mode	Continuous/timer	Continuous
Voltage	100-240V, 50/60Hz	100-240V, 50/60Hz
Power	40W	20W
Dimension[D×W×H]	220×510×260mm	150×530×190mm
Permissible ambient temperature and humidity	5-40°C, 80%RH	5-40°C, 80%RH
Protection class	IP21	IP21

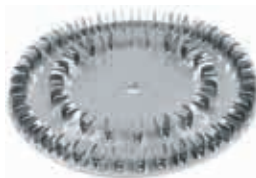


## Disk Accessories Type-1

Used for MX-RD-Pro  
for 1.5mLx60 centrifuge tubes holder

**Cat. No.**

18900160

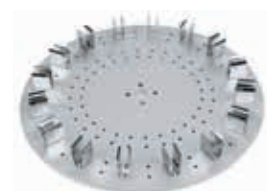


## Disk Accessories Type-2

Used for MX-RD-Pro  
for 15mLx16 centrifuge tubes holder

**Cat. No.**

18900161



## Disk Accessories Type-3

Used for MX-RD-Pro  
for 50mLx8 centrifuge tubes holder

**Cat. No.**

18900162



## Disk support rods

4pcs in a group  
use with disk accessories

**Cat. No.**

18900140



## Rotisserie Accessory Type-1

Used for MX-RL-Pro, for 1.5mLx48  
centrifuge tubes held horizontally

**Cat. No.**

18900142



## Rotisserie Accessory Type-2

Used for MX-RL-Pro, for 15mLx24  
centrifuge tubes held horizontally

**Cat. No.**

18900143



## Rotisserie Accessory Type-3

Used for MX-RL-Pro, for 50mLx24  
centrifuge tubes held horizontally

**Cat. No.**

18900144



## Rotisserie Accessory Type-4

Used for MX-RL-Pro, for 1.5mLx32  
centrifuge tubes held vertically

**Cat. No.**

18900145



## Rotisserie Accessory Type-5

Used for MX-RL-Pro, for 15mLx16  
centrifuge tubes held vertically

**Cat. No.**

18900146



## Rotisserie Accessory Type-6

Used for MX-RL-Pro, for 50mLx16  
centrifuge tubes held vertically

**Cat. No.**

18900147



## Plastic Clips

Used with MX-RL-E/MX-RD-E  
Disk/Rotisserie accessory, for  
50mL, 15mL and 1.5mL  
centrifuge tubes



The rocking rotators combine the advantages of the long axis rotator and the rocking shaker. Compared with the rocking shaker, it can provide a greater tilt angle, for better performance in some clinical laboratory applications (such as the mixing of blood samples in vacuum blood vessels). At the same time, the series minimizes redundant functional settings for straighter and simpler user operation under clinical conditions.

## SK-R30S-E Short Deck Rocking Rotator

### Features

- It can accommodate up to 10 × 5~10ml blood vessels, or 4 × 50ml tubes, with different silicon mattress accessories.



## SK-R30L-E Long Deck Rocking Rotator

### Features

- It can accommodate up to 16 × 5~10ml blood vessels, or 6 × 50ml tubes, with different silicon mattress accessories.

## SK-R30D-E Long Deck Double Layer Rocking Rotator

### Features

- It can accommodate up to 16 × 5~10ml blood vessels, or 6 × 50ml tubes on each of the two layers with different silicon mattress accessories.
- Tilt angle up to 40°.



### Specifications

	SK-R30S-E	SK-R30L-E	SK-R30D-E
Tilt angle	30±3°	30±3°	40±3°
Load capacity	1kg	1kg	1kg
Motor type	Brushless DC motor	Brushless DC motor	Brushless DC motor
Speed range[rpm]	0~30	0~30	0~30
Operation mode	Continuous	Continuous	Continuous
Dimension (W×D ×H)	295×160×120mm	405×160×120mm	405×160×160mm
Voltage	100~240V, 50/60Hz	100~240V, 50/60Hz	100~240V, 50/60Hz
Power	15W	15W	15W
Weight	1.8kg	2kg	2.2kg
Permissible ambient temperature and humidity	5~40°C, 80%RH	5~40°C, 80%RH	5~40°C, 80%RH

### Accessories Information



Silicone mattress for 16× 5~10ml blood collection tubes on long decks



Silicone mattress for 10× 5~10ml blood collection tubes on short decks



Silicone mattress for 6× 50ml test tubes on long decks (the lower layer for SK-R30D-E)



Silicone mattress for 4× 50ml test tubes on short decks



## MX-T6-Pro LCD Digital Tube Roller

### Features

- LCD displays the speed and time
- Speed range of 10-70rpm
- Six roller design for gentle rolling and easy to clean
- Continuous or timer operation

DLAB tube rollers provide a gentle and highly efficient rolling motions, ideal for mixing blood samples, viscous substances and liquid-solid suspensions. Used in a variety of applications, such as the prevention of blood coagulation, immune precipitation, etc.



LCD display



Timer

## MX-T6-S Tube Roller

### Features

- Speed range of 0-70rpm
- Six roller design for gentle rolling and easy to clean



### Specifications

	MX-T6-Pro	MX-T6-S
Amplitude	24mm	24mm
Motor type	DC motor	DC motor
Rocking motion	Rocking and rolling	Rocking and rolling
Max. load capacity	4kg	4kg
Number of rollers	6	6
Roller size[length]	280mm	280mm
Speed range	10 -70rpm	0-70rpm
Speed display	LCD	Scale
Timer	Yes	-
Timer display	LCD	-
Time setting range	1-1199min	-
Operation mode	Continuous/timer	Continuous
Voltage	100-240V,50/60Hz	100-240V,50/60Hz
Power	30W	25W
Dimension [D×W×H]	450×260×120mm	450×260×120mm
Weight	5.1kg	4.5kg
Permissible ambient temperature and humidity	5-40°C,80%RH	5-40°C,80%RH
Protection class	IP21	IP21



DLAB orbital and linear shakers are ideal for almost any vessel from microcentrifuge tubes through petri dishes and microtitre plates to conical flasks.

## **SK-O330-Pro** **SK-O180-Pro** LCD Digital Orbital Shaker

### Features

- Max. load capacity is 7.5kg(O330) and 2.5kg(O180) with platform
- Double LCDs for independent display of time and speed
- Used with a wide variety of accessories
- Maintenance- free brushless DC motor
- Over speed detection and protection
- Remote function provides PC control and data transmission



## **SK-O180-E** Economical Digital Orbital Shaker

### Features

- Max. load capacity is 3kg with platform
- Speed range of 0-200rpm
- Wide range of platforms for use with a variety of vessels

## **SK-O180-S** LED Digital Orbital Shaker

### Features

- Max.load capacity is 3kg with platform
- Double LEDs for independent display of time and speed
- Speed range of 40-200rpm
- Wide range of platforms for use with a variety of vessels







Timer



Wide range of accessories



### Specifications

	SK-O330-Pro	SK-O180-Pro	SK-O180-S	SK-O180-E
Orbital diameter	10mm	4mm	20mm	20mm
Max. load capacity (with platform)	7.5kg	2.5kg	3kg	3kg
Motor type	Brushless DC motor	Brushless DC motor	DC motor	DC motor
Motor input power	28W	28W	16W	16W
Motor output power	15W	15W	10W	10W
Speed range	100-500rpm	100-800rpm	40-200rpm	0-200rpm
Speed display	LCD	LCD	LED	scale
Timer display	LCD	LCD	LED	-
Time settings range	1min-19h59min	1min-19h59min	1min-19h59min	-
Voltage	100-240V,50/60Hz	100-240V,50/60Hz	100-240V,50/60Hz	100-240V,50/60Hz
Power	30W	30W	20W	20W
Weight	13.5kg	8.1kg	3.1kg	3.1kg
Permissible ambient temperature and humidity	5-40°C, 80%RH	5-40°C, 80%RH	5-40°C,80%RH	5-40°C, 80%RH
Dimension[WxDxH]	370x420x100mm	300x340x100mm	270x330x110mm	270x330x110mm
Protection class	IP21	IP21	IP21	IP21
Data connector	RS232	RS232	-	-



## **SK-L330-Pro** **SK-L180-Pro** LCD Digital Linear Shaker

### Features

- Max. load capacity is 7.5kg(L330) and 2.5kg(L180) with platform
- Double LCDs for independent display of time and speed
- Wide range of platforms for use with a variety of vessels
- Maintenance- free brushless DC motor
- Over speed detection and protection



## **SK-L180-S** LED Digital Linear Shaker

### Features

- Max. load capacity is 3kg with platform
- Double LEDs for independent display of time and speed
- Speed range of 40-200 rpm
- Wide range of platforms for use with a variety of vessels



## **SK-L180-E** Economical digital Linear Shaker

### Features:

- Max. load capacity is 3kg with platform
- Speed range of 0-200 rpm
- Wide range of platforms for use with a variety of vessels



# Shakers



Timer



Wide range of accessories



## Specifications

	SK-L330-Pro	SK-L180-Pro	SK-L180-S	SK-L180-E
Amplitude	10mm	4mm	20mm	20mm
Max. load capacity (with platform)	7.5kg	2.5kg	3kg	3kg
Motor type	Brushless DC motor	Brushless DC motor	DC motor	DC motor
Motor input power	28W	28W	16W	16W
Motor output power	15W	15W	10W	10W
Speed range	100-350rpm	100-350rpm	40-200rpm	0-200rpm
Speed display	LCD	LCD	LED	scale
Timer display	LCD	LCD	LED	-
Time settings range	1min-19h59min	1min-19h59min	1min-19h59min	-
Voltage	100-240V, 50/60Hz	100-240V, 50/60Hz	100-240V, 50/60Hz	100-240V, 50/60Hz
Power	30W	30W	20W	20W
Weight	13.5kg	8.1kg	3.1kg	3.1kg
Permissible ambient temperature and humidity	5-40°C, 80%RH	5-40°C, 80%RH	5-40°C, 80%RH	5-40°C, 80%RH
Dimension[WxDxH]	370x420x100mm	300x340x100mm	270x330x110mm	270x330x110mm
Protection class	IP21	IP21	IP21	IP21
Data connector	RS232	RS232	-	-



D LAB rocking and 3D shakers provide perfect solution in electrophoresis gel dyeing/dicoloration, sample washing, molecular hybridization, immunoprecipitation, Western blot and cell culture.

## SK-R330-Pro LCD Digital Rocking Shaker

### Features

- Rocking motion angle 9°
- Max. load capacity is 10kg with platform
- Speed range of 10-70rpm
- Double LCDs for independent display of time and speed
- Wide range of platforms for use with a variety of vessels



## SK-R1807-S LED Digital Rocking shaker

### Features

- Rocking motion angle 7°
- Max. load capacity is 3kg with platform
- Speed range of 10-80rpm
- Double LEDs for independent display of time and speed
- Wide range of platforms for use with a variety of vessels



## SK-R1807-E Economical Rocking Shaker

### Features:

- Rocking motion angle 7°
- Max. load capacity is 3kg with platform
- Speed range of 0-80rpm
- Wide range of platforms for use with a variety of vessels





Timer



Wide range of accessories



### Specifications

	SK-R330-Pro	SK-R1807-S	SK-R1807-E
Tilt angle	9°	7°	7°
Max. load capacity (with platform)	10kg	3kg	3kg
Motor type	DC motor	DC motor	DC motor
Motor input power	40W	16W	16W
Motor output power	24W	10W	10W
Speed range	10-70rpm	10-80rpm	0-80rpm
Speed display	LCD	LED	-
Timer display	LCD	LED	-
Time settings range	1min-19h59min	1min-19h59min	-
Voltage	100-240V, 50/60Hz	100-240V, 50/60Hz	100-240V, 50/60Hz
Power	50W	20W	20W
Weight	9kg	3.2kg	3.2kg
Permissible ambient temperature and humidity	5-40°C, 80%RH	5-40°C, 80%RH	5-40°C, 80%RH
Dimension[WxDxH]	360x410x200mm	270x330x130mm	270x330x130mm
Protection class	IP21	IP21	IP21







## SK-D3309-Pro LCD Digital 3D Shaker

### Features

- Three-dimensional rocking motion with an angle of 9°
- Max. load capacity is 5kg with platform
- Speed range of 10-70rpm
- Double LCDs for independent display of time and speed
- Various of platform accessories



## SK-D1807-S LED Digital 3D Shaker

### Features

- Three-dimensional rocking motion with the angle of 7°
- Max. load capacity is 3kg with platform
- Speed range of 10-80rpm
- Double LEDs for independent display of time and speed
- Various of platform accessories



## SK-D1807-E Economical 3D Shaker

### Features

- Three-dimensional rocking motion with the angle of 7°
- Max. load capacity is 3kg with platform
- Speed range of 0-80rpm
- Wide range of platforms for use with a variety of vessels

# Shakers



Timer



Wide range of accessories



## Specifications

	SK-D3309-Pro	SK-D1807-S	SK-D1807-E
Tilt angle	9°	7°	7°
Max. load capacity (with platform)	5kg	3kg	3kg
Motor type	DC motor	DC motor	DC motor
Motor input power	40W	16W	16W
Motor output power	24W	10W	10W
Speed range	10-70rpm	10-80rpm	0-80rpm
Speed display	LCD	LED	scale
Timer display	LCD	LED	-
Time settings range	1min-19h59min	1min-19h59min	-
Voltage	100-240V, 50/60Hz	100-240V, 50/60Hz	100-240V, 50/60Hz
Power	50W	20W	20W
Weight	9kg	2.7kg	2.7kg
Permissible ambient temperature and humidity	5-40°C, 80%RH	5-40°C, 80%RH	5-40°C, 80%RH
Dimension[WxDxH]	360x430x106mm	270x330x130mm	270x330x130mm
Protection class	IP21	IP21	IP21
Data connector	-	-	-



SK330.5



**Cat. No.**

**Description**

SK-O330-Pro  
SK-L330-Pro  
SK-R330-Pro  
SK-D3309-Pro

SK-O180-Pro/S/E  
SK-L180-Pro/S/E  
SK-R1807-S/E  
SK-D1807-S/E

18900155

Dish platform with non-slip mat and fixed string (8pcs)  
Dimension[WxD]: 30x28.5cm



SK180.4



18900185

Dish attachment with non-slip mat  
Dimension[WxD]: 24x21.5cm



SK180.5



18900200

Large size dish attachment with non-slip mat  
Dimension[WxD]: 30x23cm



SK180.6



18900326

Dish attachment with non-slip mat  
Dimension[WxD]: 28x28cm



SK330.1



18900027

Universal attachment with 4 bars  
Dimension[WxD]: 30x30cm



SK330.3



18900040

Lengthways roller attachment  
Dimension[WxD]: 30x30cm



SK180.1



18900025

Universal attachment with 3 bars  
Dimension[WxD]: 24x24cm



SK180.3



18900038

Lengthways roller attachment  
Dimension[WxD]: 24x24cm



18900036

Bar for SK330.1 universal attachment



18900037

Bar for SK180.1 universal attachment



18900280

Connect sticks for double dishes shaker



# Shakers | Accessories



SK330.2



SK180.2



Cat. No.	Description	SK-O330-Pro SK-L330-Pro SK-R330-Pro SK-D3309-Pro	SK-O180-Pro/S/E SK-L180-Pro/S/E SK-R1807-S/E SK-D1807-S/E
18900028	Fixing clip attachment	■	
18900026	Fixing clip attachment		■
18900029	Fixing clip for flask volume 25mL, used with SK330.2[28pcs] SK180.2[9pcs]	■	■
18900030	Fixing clip for flask volume 50mL, used with SK330.2[16pcs] SK180.2[9pcs]	■	■
18900031	Fixing clip for flask volume 100mL, used with SK330.2[16pcs] SK180.2 [9pcs]	■	■
18900032	Fixing clip for flask volume 200/250 mL, used with SK330.2[9pcs] SK180.2[4pcs]	■	■
18900033	Fixing clip for flask volume 500mL, used with SK330.2[9pcs] SK180.2[2pcs]	■	■

## Spectrophotometer

SP-V1000/SP-UV1000/SP-V1100/  
SP-UV1100

The spectrophotometer is an indispensable instrument routinely used in colleges, universities and research institutes for quantitative analysis in fields including biotechnology and quality control of new material developed. V-Series provides high resolution, high performance and excellent stability.



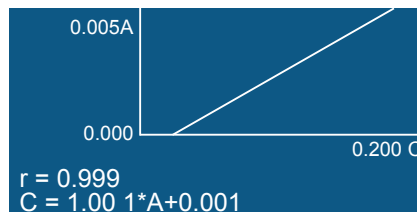
### Features

- **User Friendly Operation and Information Rich LCD Display:** The large 128 x 64 dots, backlit LCD screen with adjustable brightness control displays a large array of data also in graphical format
- **On-Board Data Storage:** The System can save the test results, up to 200 groups of data and 200 standard curves in the RAM memory
- Data can be restored after a sudden power failure
- **Auto setting wavelength:** To set wavelength automatically to calibrate the system through arrow keys to avoid operation errors
- **Automatic Switching:** Tungsten & Deuterium lamps switching is automatic. Selectable from a wavelength range of 190 to 1100nm
- **PC control through application software:** The spectrophotometer is fully equipped and capable of executing all functions in stand-alone mode. The optional application software 'Wave Professional' provides computer control for the spectrophotometer (through the built-in USB port), apart from other functions such as spectrum scan, Time scan (kinetics), multiwavelength scanning & Nucleic Acid /Protein measurement. (SP-V1100/SP-UV1100)
- **Large sample compartment:** To accommodate 5–100mm path length cuvettes with optional holders. A variety of optional accessories are available

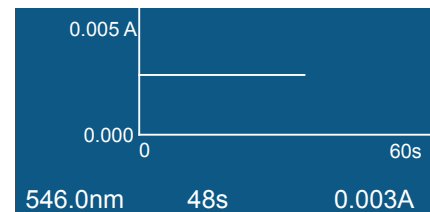
### Basic Mode

546.0nm		0.001A
No.	WL.	Abs.
1	230.0	0.001
2	340.0	0.000
3	450.0	0.002
4	540.0	0.000
5	620.0	0.003

### Quantitative



### Kinetics





# Spectrophotometer



Model	SP-V1000	SP-UV1000	SP-V1100	SP-UV1100
Optical System	Single Beam	Single Beam	Single Beam	Single Beam
Light Source	Tungsten lamp	Tungsten lamp & Deuterium lamp	Tungsten lamp	Tungsten lamp & Deuterium lamp
Spectral Bandwidth	4.0nm	4.0nm	2.0nm	2.0nm
Wavelength Range	325-1000nm	200-1000nm	320-1100nm	190-1100nm
Wavelength Accuracy	±2nm	±2nm	±0.5nm	±0.5nm
Wavelength Repeatability	≤1nm	≤1nm	≤0.3nm	≤0.3nm
Photometric Range	-0.3 - 3.0 A, 0 - 200%T	-0.3-3.0A, 0-200 %T	-0.3 - 3.0 A, 0 - 200 %T	-0.3 - 3.0 A, 0 - 200%T
Photometric Accuracy	±0.003 A @ 0.5 A, ±0.006 A @ 1.0 A, ±0.5%T @ 100%T	±0.003 A @ 0.5 A, ±0.006 A @ 1.0 A, ±0.5%T @ 100%T	±0.002 A @ 0.5 A, ±0.004 A @ 1.0 A, ±0.3%T @ 100%T	±0.002 A @ 0.5 A, ±0.004 A @ 1.0 A, ±0.3%T @ 100%T
Photometric Repeatability	≤0.0015 A @ 0.5 A, ≤0.003 A @ 1.0 A, ≤0.25%T @ 100%T	≤0.0015 A @ 0.5 A, ≤0.003 A @ 1.0 A, ≤0.25%T @ 100%T	≤0.001 A @ 0.5 A, ≤0.002 A @ 1.0 A, ≤0.15%T @ 100%T	≤0.001 A @ 0.5 A, ≤0.002 A @ 1.0 A, ≤0.15%T @ 100%T
Stability	≤0.002 A/h @ 500 nm (after preheat 2 hours)	≤0.002 A/h @ 500 nm (after preheat 2 hours)	≤0.002 A/h @ 500 nm (after preheat 2 hours)	≤0.002 A/h @ 500 nm (after preheat 2 hours)
Stray Light	≤0.2%T @ 360nm	≤0.2%T @ 220&360nm	≤0.05%T @ 360nm	≤0.05%T @ 220 & 360nm
Sample Compartment	4-position, 10mm pathlength cuvette	4-position, 10mm pathlength cuvette	4-position, 10mm pathlength cuvette	4-position, 10mm pathlength cuvette
Display	LCD	LCD	LCD	LCD
Output	USB Port & Parallel Port (Printer)	USB Port & Parallel Port (Printer)	USB Port & Parallel Port (Printer)	USB Port & Parallel Port (Printer)
Power	110/220VAC, 50/60Hz, 80W	110/220VAC, 50/60Hz, 120W	110/220VAC, 50/60Hz, 80W	110/220VAC, 50/60Hz, 120W
Dimension(LxWxH)	490×360×210mm	490×360×210mm	490×360×210mm	490×360×210mm
Weight	12kg	14kg	12kg	14kg

# Spectrophotometer | Accessories



**Cat. No.** 18900337  
Micro Cell holder



**Cat. No.** 18900340  
8-position auto cell changer  
(for SP-V1100&SP-UV1100)



**Cat. No.** 18900331  
4-cell holder for 10mm squ.cuvette



**Cat. No.** 18900332  
4-cell holder for 10mm  
to 50mm squ. cuvette



**Cat. No.** 18900333  
4-cell holder for up to  
100mm squ.cuvette



**Cat. No.** 18900338  
Test tube holder(ø8-ø22mm)



**Cat. No.** 18900334  
cylindrical cell holder(ø16mm)



**Cat. No.** 18900339  
solid sample holder  
(ø1.5-3mmø1 position)



**Cat. No.** 18900335  
10mm water-jacketed 1 cell holder  
(for SP-V1100 & SP-UV1100)



**Cat. No.** 18900336  
10mm water-jacketed 4-cell holder  
(for SP-V1100 & SP-UV1100)



Square cuvettes glass/quartz  
1-5mm/10-100mm



**Cat. No.** 18900341  
12V20W halogen lamp



**Cat. No.** 18900342  
Milas deuterium lamp,10V,300mA, 30W  
(for SP-UV1000&SP-UV1100)

# GeSMART

## GeSMART

The GeSMART gel imaging system can be used for qualitative analysis of nucleic acid and protein in purification and /or separation application, or colony counting application.

### Functions & Applications

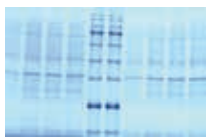
GeSMART facilitates fast access to acquire high-quality images of electrophoresis gel or transfer membrane for analysis using smartphone/ tablet. With epi-blue instead of ultraviolet light source, GeSMART is able to safely and efficiently visualize stained DNA signals after gel electrophoresis.

In addition, Coomassie blue stained SDS-PAGE and colony dishes can be observed with the light plate mounted on the GeSMART.

Optionally you can control the complete imaging system via an app on your smartphone or tablet.



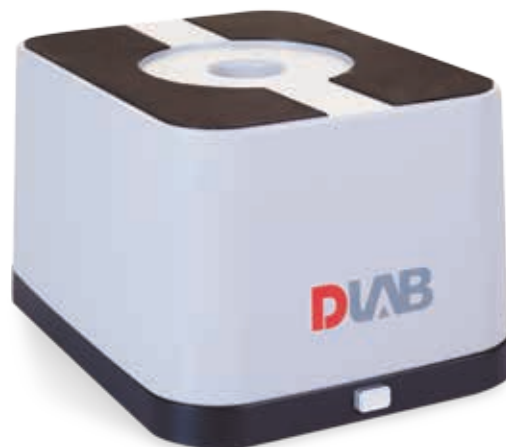
ECO Safe staining



Coomassie blue stained SDS-PAGE



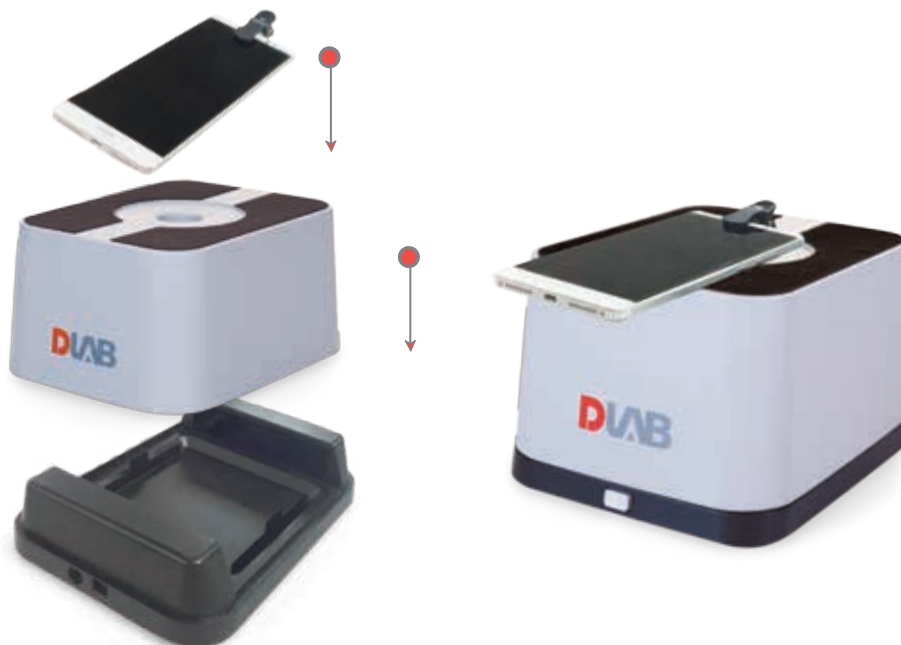
colony dish image



### Features

- Compact foot print with a field of 10×10cm
- Simple operation of experiments and quick acquisition of results
- Epi-blue light diminishes UV exposure to lab personnel and DNA damage in the sample
- Adjustable epi-blue light source emits light with high intensity and minimum heat for better light control
- Filter holders can accommodate most popular smartphones/tablets
- Optional light-weight app

### Simple assemble



## Applications:



Light source cover



Light source



Smartphone



App

Observe and cut gels safe and sound with the amber filter shield



## Specifications

## GeSMART

Light Source	470nm epi blue light
White Light Plate	Yes
Filter Protective Shield	Amber, using when observing or cutting gels
Viewing Area	10 x 10cm
Compatible Dye	DNA: ECO Safe, SYBR Safe, GelGreen Protein: Lightning Red, Silver/ Coomassie blue, SYPRO Ruby
Light Source (L x W x H)	216 x 168 x 54 mm
Light Source Cover (L x W x H)	211 x 161 x 108 mm
Total Size (L x W x H)	216 x 168 x 128 mm
Weight	1.2 Kg
Power Supply	12V / 1.5A AC power adapter
Optional app	for Android 4.4 and above or iOS9.0 and above

# Sterilizer

DLAB Infrared sterilizers are designed for sterilization of laboratory equipments like inoculating loop, inoculated needles, tweezers and other small items for high temperatures with short time sterilization. These can also be used for the low temperatures with long time sterilization to prevent contamination.

## ST800-S / ST800-E ST800-SA / ST800-EA Infrared Sterilizer

### Features

- DLAB sterilizers are fast, convenient and can replace alcohol lamps and bunsen burners
- Sterilization is completed within 5-7 seconds
- Very safe to operate with no visual fire. It is only ashing the organic matter in the depths of ceramic heating body and preventing cross contamination
- LED display of actual temperature with temp. control accuracy of 10°C
- These can be used in biology safety cabinets and clean bench space
- Precise temperature control precision and adjustable from 300 - 830°C
- Heating zone angle adjustable(ST800-SA/EA)
- Optional bracket support for inoculating loop or inoculated needles instead of holding them by hand

ST800-EA



ST800-SA



Specifications	ST800-S	ST800-E	ST800-SA	ST800-EA
Display	LED	/	LED	/
Temperature range [°C]	300~830	830	300~830	830
Central zone max temperature [°C]	825±50	825±50	825±50	825±50
The heating zone adjustable angle	/	/	0-40°	0-40°
Max. outer diameter of sterilized items [mm]	15	15	15	15
The total length of heating area [mm]	140	140	140	140
Heating tube	Ceramic	Ceramic	Ceramic	Ceramic
Shell	ABS	ABS	ABS	ABS
Dimensions [LxWxH] (mm)	180x120x217	180x120x217	180x120x186	180x120x186
Weight[kg]	1.5	1.5	1.5	1.5
Voltage[V]	220V, 50/60Hz	220V, 50/60Hz	220V, 50/60Hz	220V, 50/60Hz
Power[W]	190	190	190	190
Working temperature [°C]	-10~40	-10~40	-10~40	-10~40
Working humidity [% RH]	<80	<80	<80	<80
Storage temperature [°C]	-40~60	-40~60	-40~60	-40~60
Storage humidity [% RH]	10~90	10~90	10~90	10~90





**DLAB Scientific Inc.**

Add: 775 Rivera St, Riverside, CA 92501, USA

Tel: +1- 747- 230-5179

Fax: +1-909-230-5275

E-mail: [info@dlabsci.com](mailto:info@dlabsci.com)

Service contact: [service@dlabsci.com](mailto:service@dlabsci.com)

web: [www.dlabsci.com](http://www.dlabsci.com)